

LMHS-LC

Single Duct Terminal Unit | Large Casing



INTRODUCTION

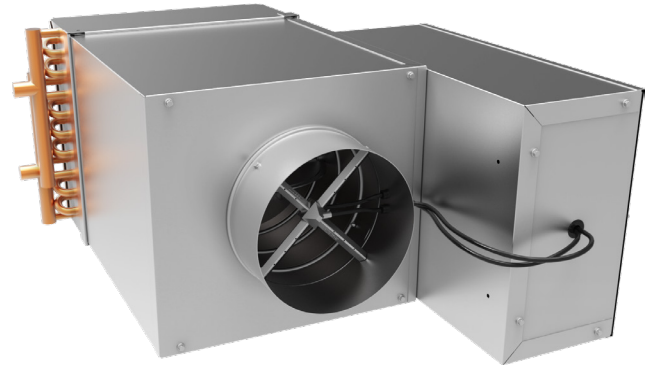
The LMHS-LC terminal units are a fantastic energy efficient alternative to the traditional LMHS single duct terminal unit. The LMHS-LC utilizes a large casing, which accompanied with a hot water re-heat coil greatly reduces air pressure loss through the coil, increases heating performance, and in some cases reduces number of coil rows. This is especially true when low entering water temperature is used for the hot water reheat coil. The LMHS-LC comes with several different configurations and control packages that makes it easy to integrate into any HVAC system. The efficient and reliable LMHS-LC unit is available with pneumatic, analog or direct digital control options. When your design is maximizing on every opportunity to be energy efficient with a hot water reheat system, the Krueger LMHS-LC is the terminal unit of choice.

MODEL

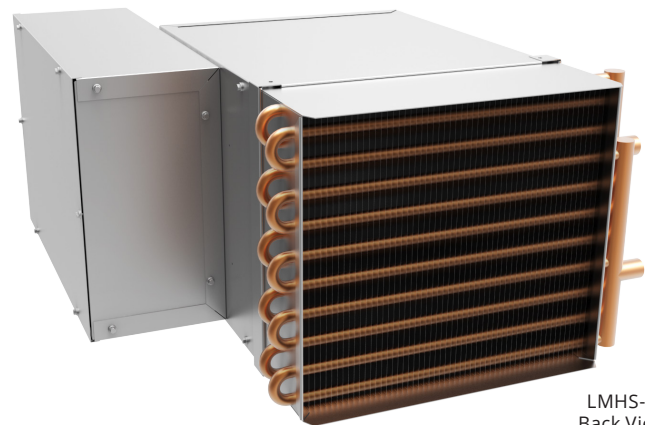
LMHS-LC: Large Casing Single Duct Terminal Unit

FEATURES

- 22 gauge galvanized steel casing construction with a 20 gauge casing option that provides strength and product durability.
- AHRI listings for certified performance in accordance with AHRI Standard 880 testing standard.
- Available 6"x9" access opening for easy accessibility during routine inspections and maintenance.
- Several casing liner options provide quiet and clean operation.
- Airflow capacities from 40 to 2800 CFM providing airflow control for most commercial applications.
- Round inlet sizes from 4" through 14" diameter which are slightly undersized to fit standard spiral and flex duct.
- Rectangular discharge with slip and drive connections providing quick and easy connection to hot water heat coils and down stream duct work.
- Pneumatic, analog, and digital controls may be customized for many building systems. BACnet/BMS compatible digital controls can be provided by Krueger.
- K4 Lineacross four quadrant, multi-point center averaging sensor or optional linear, multiple-point, averaging velocity sensor, offers low resistance to airflow while providing amplified velocity pressure signal to the controller.
- Gasketed round volume control damper operates over a full 90° range and provides a low leakage shutoff position.
- An oversized hot water coil outperforms the a traditionally sized hot water coil, making this unit the perfect terminal unit for low entering water temperature applications.



LMHS-LC
Front View



LMHS-LC
Back View