

Introduction: AFL

The Krueger AFL Ceiling Mounted Displacement Diffusers are designed to supply air at a low velocity from a suspended ceiling application. The AFL discharges air evenly across the face in a laminar flow pattern with minimal induction of room air. This Lay-in style diffuser installs quickly and easily in a standard T-bar ceiling, ideal in retrofit applications where there is no room for wall or floor mounted diffusers.

MODEL

AFL - Flat-faced, Lay-in, Ceiling Mount,
 Low-Velocity Displacement Diffuser

FEATURES

- Square or rectangular sizes available
- For lay-in T-bar ceilings
- Supplies air at low velocities
- Galvanized steel and aluminum extrusion construction
- Standard hanger tabs located on each corner of plenum
- Round duct connection at top of unit

PANEL SIZES *

- | | | |
|-----------|-----------|-----------|
| • 12 x 24 | • 24 x 24 | • 36 x 36 |
| • 12 x 36 | • 24 x 36 | • 36 x 48 |
| • 12 x 48 | • 24 x 48 | • 36 x 60 |
| • 12 x 60 | • 24 x 60 | • 36 x 72 |
| • 12 x 72 | • 24 x 72 | |

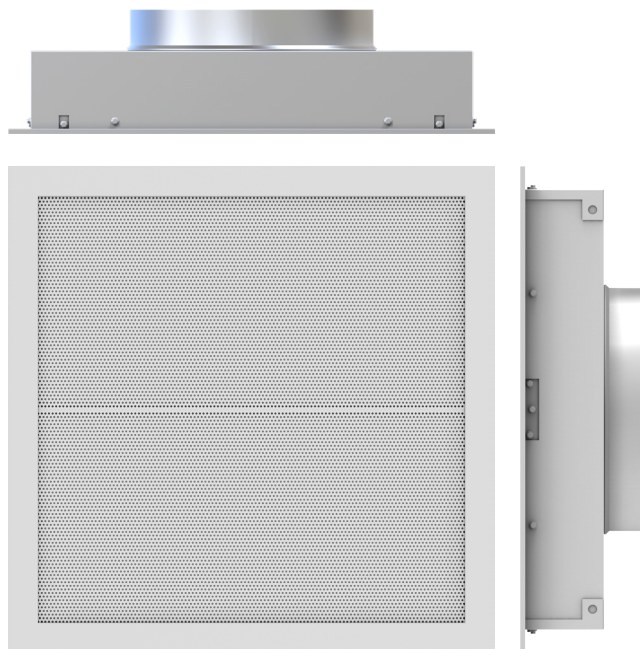
OPTIONS

- Stainless steel construction
- 1" insulation
- Front face panel thickness of 20 gauge (not available in stainless steel)

FINISHES

- Standard finish is 44 white for galvanized steel and aluminum material
- Standard finish is 90 mill finish for stainless steel
- Custom colors available

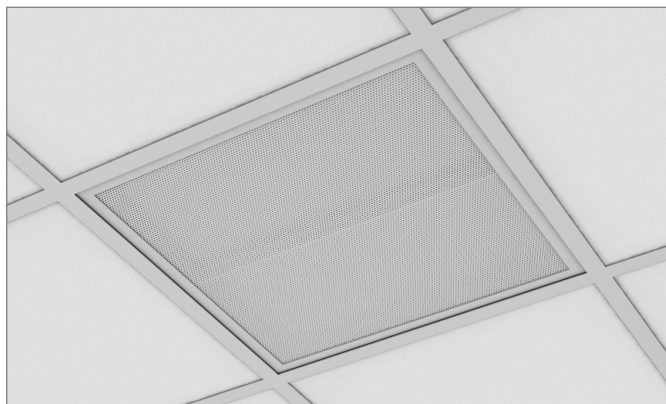
* Inlet size availability per panel provided on next page.



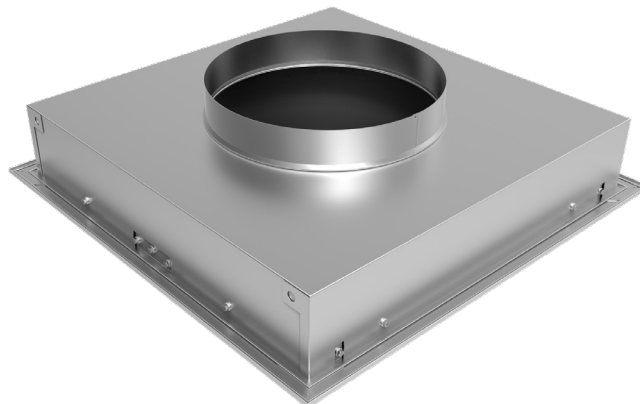
AFL Face and Side Views



AFL Isometric Face View



AFL Installation View



AFL Isometric Plenum View