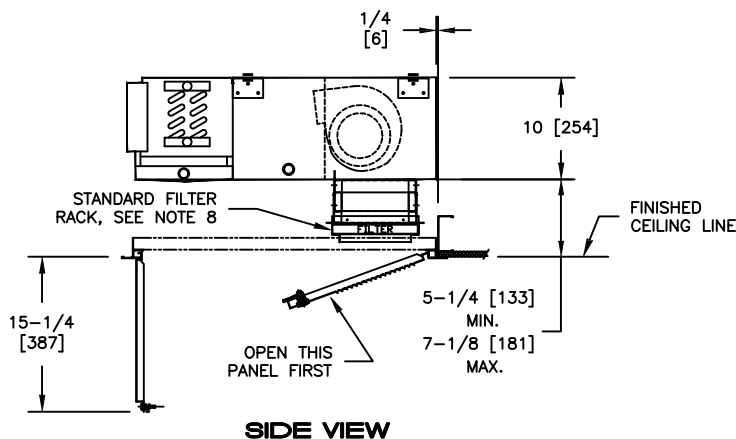
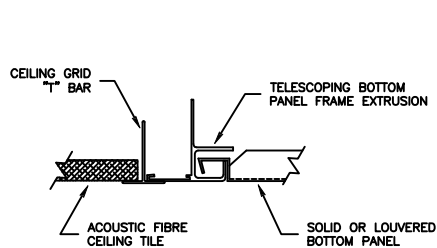


TYPICAL INSTALLATION METHODS



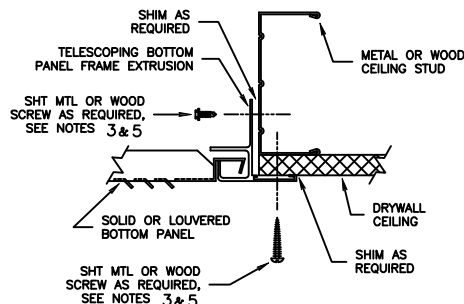
SIDE VIEW

SUSPENDED GRID/TILE CEILING SYSTEM

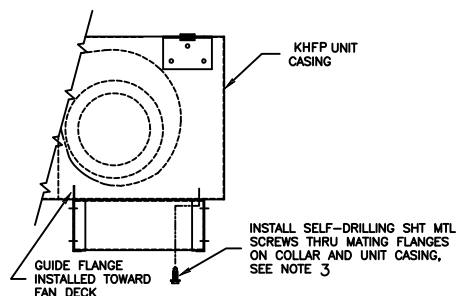


NOTE: CEILING "T" BAR GRID MAY NOT SUPPORT TELESCOPING BOTTOM PANEL ASSEMBLY. BOTTOM PANEL ASSEMBLY MAY REQUIRE INDEPENDENT SUPPORT.

STUD/DRYWALL CEILING SYSTEM



INLET COLLAR INSTALLATION



NOTES:

- ALL DIMENSIONS ARE INCHES [MILLIMETERS]. ALL DIMENSIONS +/- 1/4" [6MM]. METRIC VALUES ARE SOFT CONVERSION
- LEFT HAND UNIT SHOWN, RIGHT HAND UNIT OPPOSITE
- MOUNTING HARDWARE NOT PROVIDED. MOUNTING HOLES MUST BE LOCATED AND DRILLED TO SUIT INDIVIDUAL JOB REQUIREMENTS
- REMOVE SOLID AND LOUVERED BOTTOM PANELS BEFORE MOUNTING FRAME ASSEMBLY
- FRAME ASSEMBLY MUST BE INSTALLED FLAT AND SQUARE. FAILURE TO DO SO MAY RESULT IN POOR BOTTOM PANEL FIT AND IMPROPER AIRFLOW PATTERN
- SHIM FRAME TO SUPPORT AS REQUIRED
- TELESCOPING SKIRT ASSEMBLY MUST BE FIELD ADJUSTED TO ASSURE CLOSE FIT OF FILTER RACK TO LOUVERED BOTTOM PANEL
- ATTACH STANDARD FILTER RACK ASSEMBLY TO BOTTOM OF TELESCOPING SKIRT...
- AFTER RACK ASSEMBLY TO BOTTOM OF TELESCOPING SKIRT, AFTER FINAL ADJUSTMENT OF SKIRT LOCATION. FILTER REMOVAL DIRECTION IS OPTIONAL
- PORTIONS OF THE INLET LOUVER NOT DIRECTLY BELOW UNIT INLET MAY REQUIRE COVERING IN THE FIELD ON APPLICATIONS...
- WHERE INFILTRATION OF CEILING PLENUM AIR INTO SPACE IS UNDESIED

Revision Date:

04/15

Form:

FCS01-KHF04

Replaces:

NEW