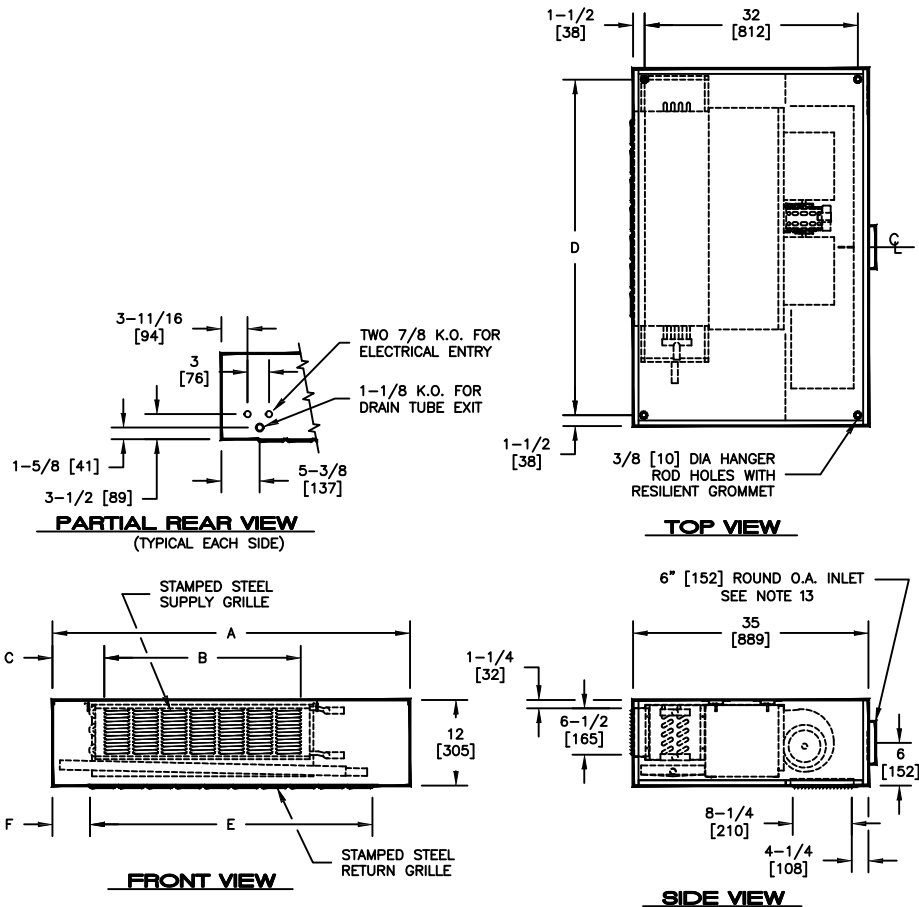


KHFE- HORIZONTAL FAN COIL

EXPOSED , FRONT STAMPED SUPPLY GRILLE
 BTM STAMPED RTN GRILLE W/6" ROUND REAR O.A. INLET

JOB NAME _____
 ENGINEER _____
 CONTRACTOR _____
 TAG _____

SUBMITTAL SHEET



SIZE	A	B	C	D	E	F
20	40 [1016]	19-1/2 [495]	6-1/4 [159]	37 [940]	27-1/2 [699]	6-1/4 [159]
25	46 [1168]	23-1/2 [597]	6-1/4 [159]	43 [1092]	35-1/2 [902]	5-1/4 [133]
30	50 [1270]	27-1/2 [699]	7-1/4 [184]	47 [1194]	39-1/2 [1003]	5-1/4 [133]
40	60 [1524]	39-1/2 [1003]	6-1/4 [159]	57 [1448]	47-1/2 [1207]	6-1/4 [159]
50	70 [1778]	47-1/2 [1207]	7-1/4 [184]	67 [1702]	59-1/2 [1511]	5-1/4 [133]
60	80 [2032]	59-1/2 [1511]	6-1/4 [159]	77 [1956]	67-1/2 [1715]	6-1/4 [159]

- NOTES:
1. ALL DIMENSIONS ARE INCHES [MM]
 2. ALL DIMENSIONS ARE $\pm 1/4"$ [6]
 3. METRIC VALUES ARE SOFT CONVERSION
 4. LEFT HAND UNIT SHOWN, RIGHT HAND UNIT OPPOSITE
 5. ELECTRICAL ENCLOSURE SIZE AND LOCATION MAY VARY WITH OPTIONAL FEATURES
 6. PROVIDE SUFFICIENT CLEARANCE TO ACCESS ELECTRICAL CONTROLS
 7. COMPLY WITH APPLICABLE CODES AND ORDINANCES
 8. DRAIN PIPING SHOULD BE ROUTED THROUGH CASING OPENING INDICATED TO PROVIDE PROPER DRAIN SLOPE
 9. LOUVERED BOTTOM PANEL IS HINGED AND REMOVABLE FOR ACCESS TO FILTER AND FAN ASSEMBLY
 10. FIXED BOTTOM PANEL IS REMOVABLE FOR ACCESS TO OPTIONAL ELECTRICAL ENCLOSURE, COIL, AND DRAIN PAN
 11. INTERNAL INSULATION OF FIELD PIPING MAY BE REQUIRED
 12. FIELD PIPING CASING PENETRATIONS MUST BE CUT IN THE FIELD TO MATCH INDIVIDUAL JOB REQUIREMENTS
 13. 6" [152] ROUND O.A. INLET IS UNFILTERED

Revision Date: 04/15

Form: FCS01-KHFE19

Replaces: NEW