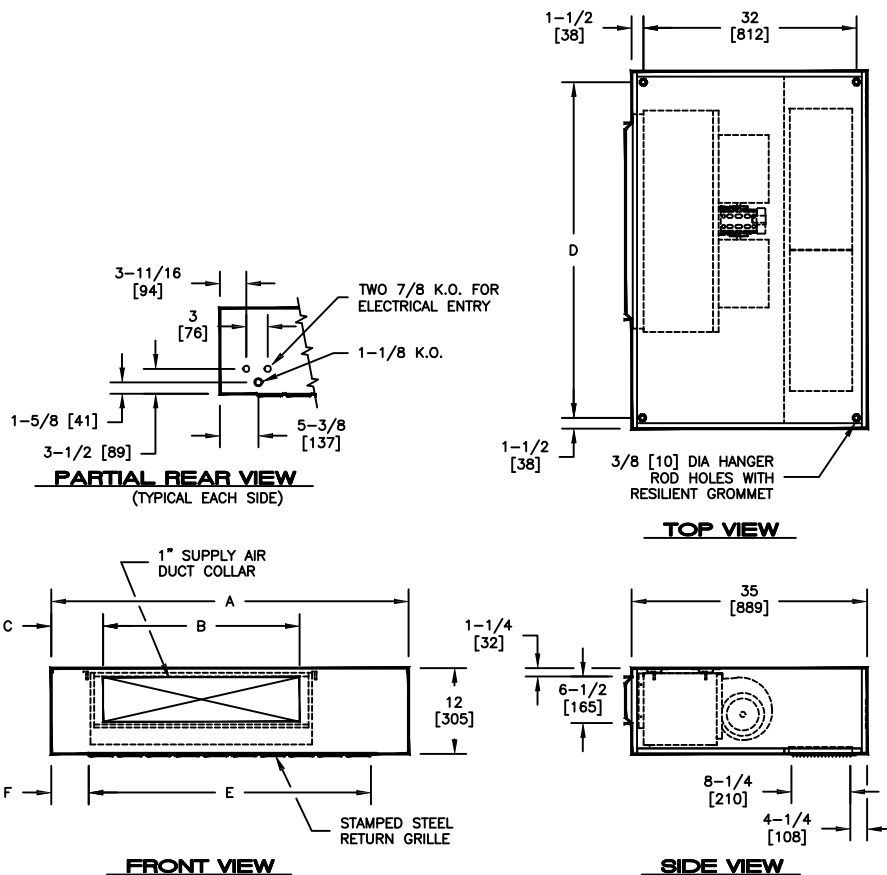


KHFE- HORIZONTAL FAN COIL

EXPOSED , FRONT DUCTED SUPPLY GRILLE BOTTOM STAMPED RETURN GRILLE, ELECTRIC HEAT ONLY

JOB NAME _____
 ENGINEER _____
 CONTRACTOR _____
 TAG _____

SUBMITTAL SHEET



SIZE	A	B	C	D	E	F
20	40 [1016]	19-1/2 [495]	6-1/4 [159]	37 [940]	27-1/2 [699]	6-1/4 [159]
25	46 [1168]	23-1/2 [597]	6-1/4 [159]	43 [1092]	35-1/2 [902]	5-1/4 [133]
30	50 [1270]	27-1/2 [699]	7-1/4 [184]	47 [1194]	39-1/2 [1003]	5-1/4 [133]
40	60 [1524]	39-1/2 [1003]	6-1/4 [159]	57 [1448]	47-1/2 [1207]	6-1/4 [159]
50	70 [1778]	47-1/2 [1207]	7-1/4 [184]	67 [1702]	59-1/2 [1511]	5-1/4 [133]
60	80 [2032]	59-1/2 [1511]	6-1/4 [159]	77 [1956]	67-1/2 [1715]	6-1/4 [159]

NOTES:

- ALL DIMENSIONS ARE INCHES [MM]
- ALL DIMENSIONS ARE ±1/4" [6]
- METRIC VALUES ARE SOFT CONVERSION
- "ELECTRIC HEAT ONLY" UNITS AVAILABLE LEFT HAND ONLY
- ELECTRICAL ENCLOSURE SIZE AND LOCATION MAY VARY WITH OPTIONAL FEATURES
- PROVIDE SUFFICIENT CLEARANCE TO ACCESS ELECTRICAL CONTROLS
- COMPLY WITH APPLICABLE CODES AND ORDINANCES
- LOUVERED BOTTOM PANEL IS HINGED AND REMOVABLE FOR ACCESS TO FILTER AND FAN ASSEMBLY
- FIXED BOTTOM PANEL IS REMOVABLE FOR ACCESS TO OPTIONAL ELECTRICAL ENCLOSURE

Revision Date:

04/15

Form:

FCS01-KHFE13

Replaces:

NEW