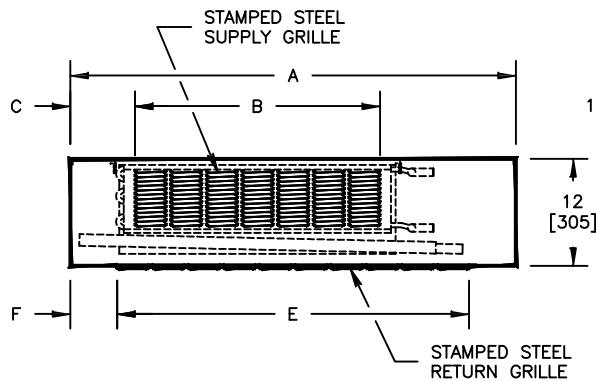
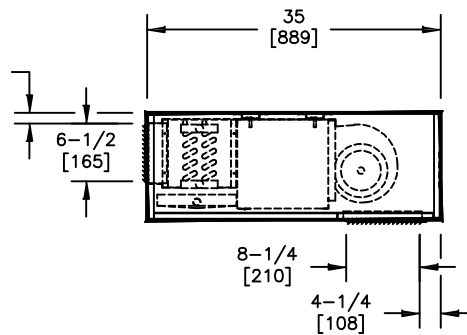

TOP VIEW

FRONT VIEW

SIDE VIEW

SIZE	A	B	C	D	E	F
20	40 [1016]	19-1/2 [495]	6-1/4 [159]	37 [940]	27-1/2 [699]	6-1/4 [159]
25	46 [1168]	23-1/2 [597]	6-1/4 [159]	43 [1092]	35-1/2 [902]	5-1/4 [133]
30	50 [1270]	27-1/2 [699]	7-1/4 [184]	47 [1194]	39-1/2 [1003]	5-1/4 [133]
40	60 [1524]	39-1/2 [1003]	6-1/4 [159]	57 [1448]	47-1/2 [1207]	6-1/4 [159]
50	70 [1778]	47-1/2 [1207]	7-1/4 [184]	67 [1702]	59-1/2 [1511]	5-1/4 [133]
60	80 [2032]	59-1/2 [1511]	6-1/4 [159]	77 [1956]	67-1/2 [1715]	6-1/4 [159]

- NOTES:
- ALL DIMENSIONS ARE INCHES [MM]
 - ALL DIMENSIONS ARE ±1/4" [6]
 - METRIC VALUES ARE SOFT CONVERSION
 - LEFT HAND UNIT SHOWN, RIGHT HAND UNIT OPPOSITE
 - ELECTRICAL ENCLOSURE SIZE AND LOCATION MAY VARY WITH OPTIONAL FEATURES
 - PROVIDE SUFFICIENT CLEARANCE TO ACCESS ELECTRICAL CONTROLS AND COMPLY WITH APPLICABLE CODES AND ORDINANCES
 - DRAIN PIPING SHOULD BE ROUTED THROUGH CASING OPENING INDICATED TO PROVIDE PROPER DRAIN SLOPE
 - LOUVERED BOTTOM PANEL IS HINGED AND REMOVABLE FOR ACCESS TO FILTER AND FAN ASSEMBLY
 - FIXED BOTTOM PANEL IS HINGED AND REMOVABLE FOR ACCESS TO OPTIONAL ELECTRICAL ENCLOSURE, COIL, AND DRAIN PAN
 - INTERNAL INSULATION OF FIELD PIPING MAY BE REQUIRED
 - FIELD PIPING CASING PENETRATIONS MUST BE CUT IN THE FIELD TO MATCH INDIVIDUAL JOB REQUIREMENTS

Revision Date:

04/15

Form:

FCS01-KHFE01

Replaces:

NEW