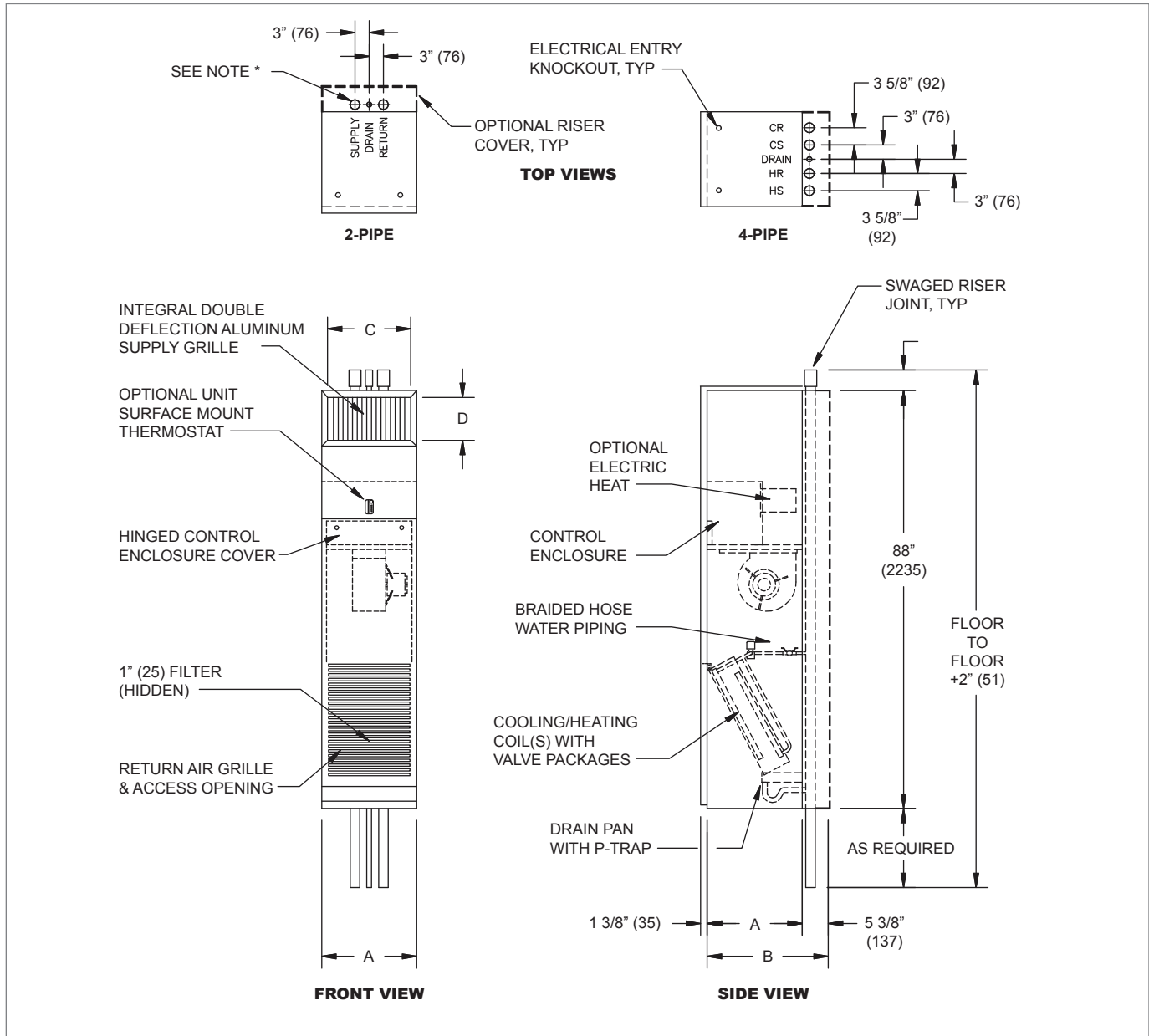


KVPE Dimensional Information

KVPE TOP AND SIDE VIEWS



DIMENSIONAL REFERENCES

| Unit Size | A | B | C | D |
|-----------|-----------|---------------|-----------|-----------|
| 03 - 04 | 18" (457) | 23 3/8" (594) | 16" (406) | 8" (203) |
| 06 - 08 | 20" (508) | 25 3/8" (645) | 18" (457) | 12" (305) |
| 10 - 12 | 24" (610) | 29 3/8" (746) | 22" (559) | 14" (356) |

NOTES: All dimensions are in inches (millimeters) and are +/- 1/4" (6mm). Thermostat is shipped loose and may be unit surface mounted or remote wall mounted. Wiring from electrical entry point to control enclosure is furnished and installed by others in field. Risers available from 3/4" (19mm) to 3" (76mm) diameter with 1/2" (13mm) thick insulation, and 3/4" (19mm) to 2 1/2" (64mm) diameter with 3/4" (19mm) thick insulation. Riser length is 120" (3048mm) max., 100" (2540mm) min. Factory mounted risers shown. Risers may also ship in advance of unit. See riser drawings for details. Standard cabinet finish is Pearl White Satin. Floor and ceiling trim furnished and installed by others.

* All units are back riser, front single supply, arrangement BF00 only.

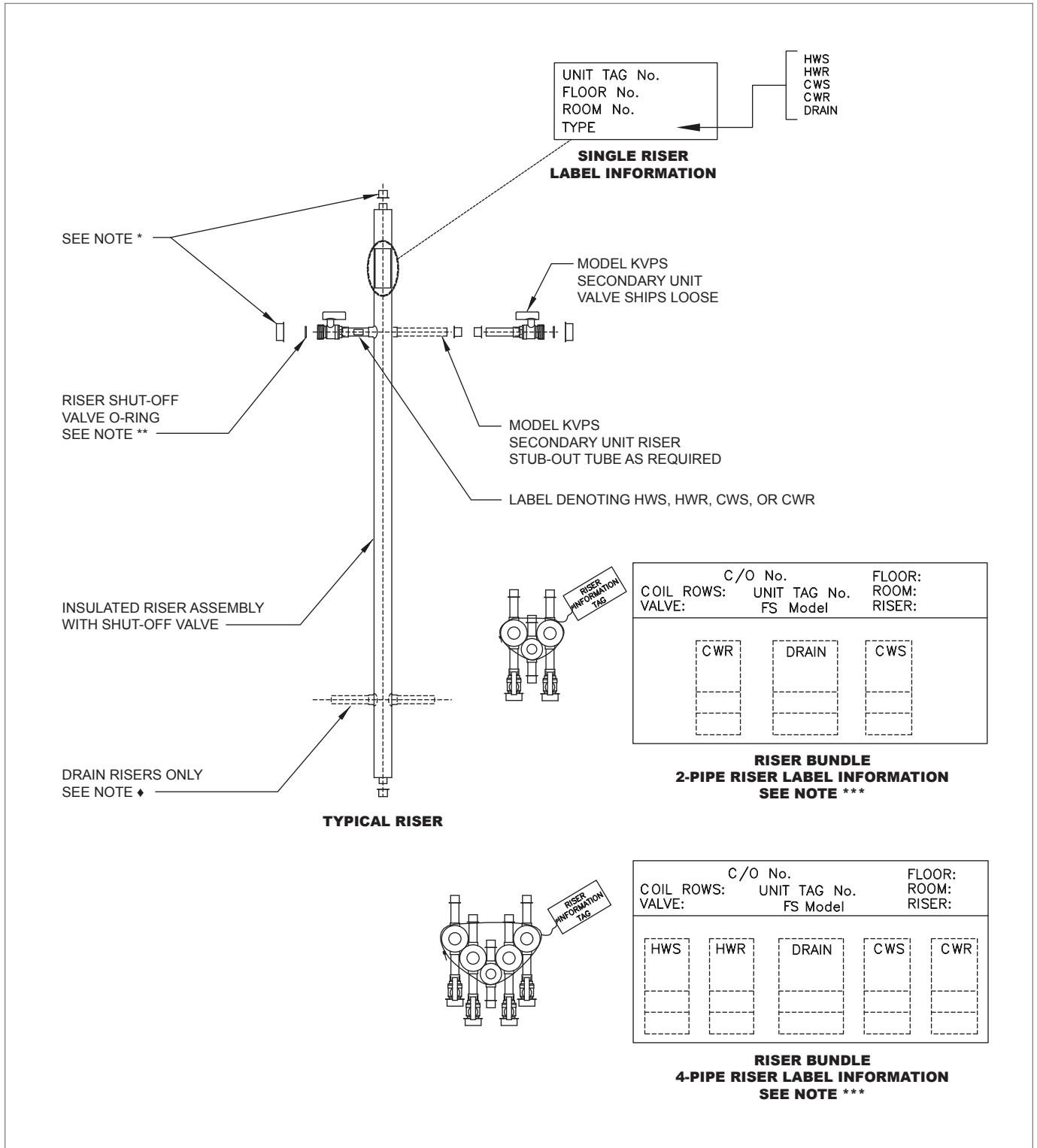
FAN COILS

KVP SERIES

© KRUEGER 2012

KVP Series Riser Dimensional Information

KVP RISER ASSEMBLY



NOTES: All risers are factory tested, and guaranteed to be leak free at time of shipment.

- * All risers and valves are shipped with protective caps. These caps should remain in place until installation of the unit.
- ** Each valve is supplied with an O-ring that is bagged and shipped loose for field installation by others.
- *** Riser information shown shall reflect matching unit identification labels. KVPS secondary units will have mirror image orientation and will be labeled in units.
- ♦ Condensate P-trap and hose clamps ship installed in unit for field connections to drain riser.

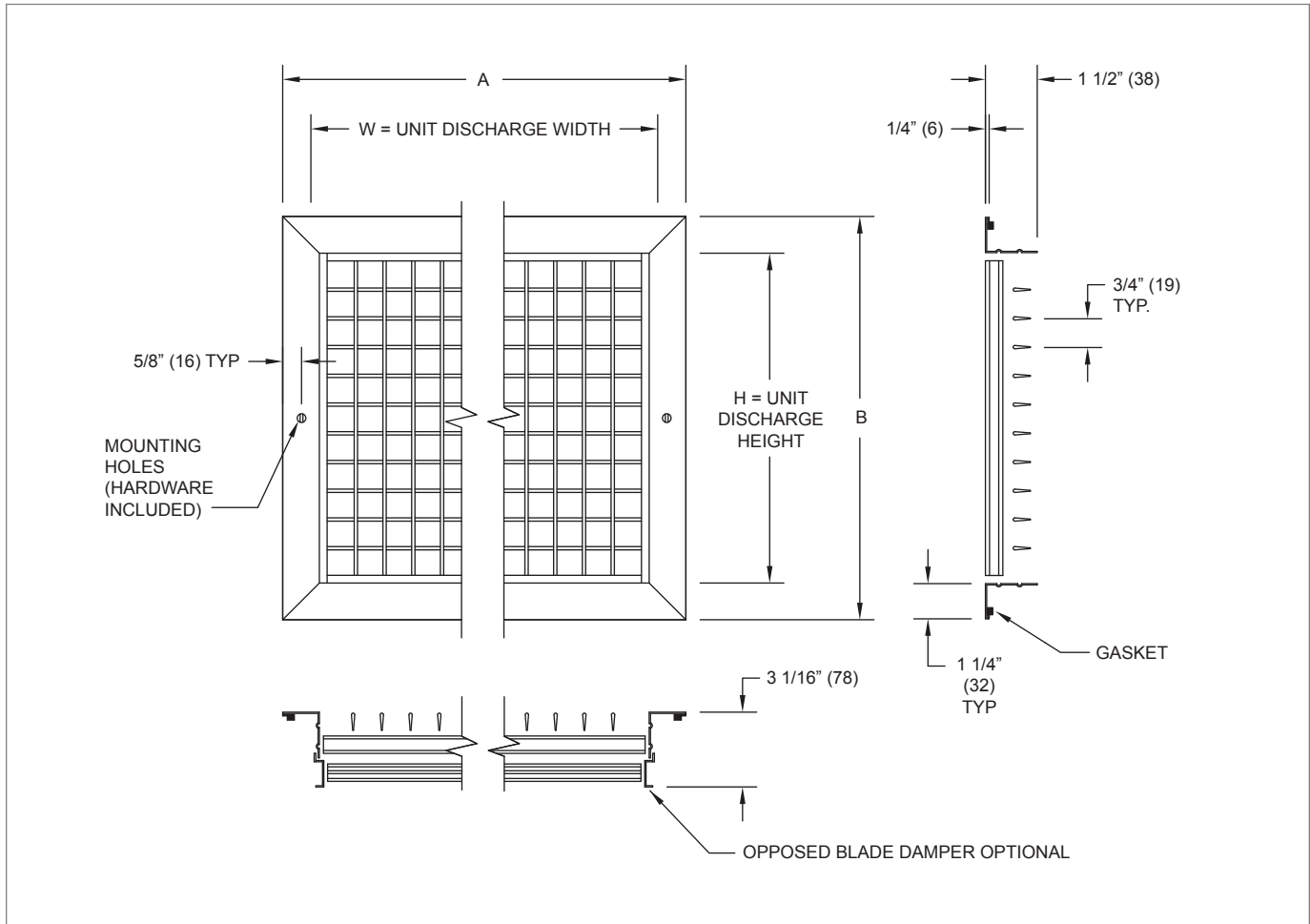
© KRUEGER 2012

FAN COILS

KVP - SERIES

KVP Series Double Deflection Grille Dimensional Information

KVP SERIES DOUBLE DEFLECTION GRILLE TOP AND SIDE VIEWS



DIMENSIONAL REFERENCES

| Model Type | Unit Size | Cabinet Height | Single & Double Supply | | | |
|---|-----------|----------------|------------------------|-----------|-----------------|-----------------|
| | | | W | H | A | B |
| Vertical Hi-Rise & Tandem Primary & Secondary Same Size Units | 03 or 04 | Standard | 16" (406) | 8" (203) | 17 11/16" (449) | 9 11/16" (246) |
| | 06 or 08 | Standard | 18" (457) | 12" (305) | 19 11/16" (500) | 13 11/16" (348) |
| | 10 or 12 | Standard | 22" (559) | 14" (356) | 23 11/16" (602) | 15 11/16" (398) |

| Model Type | Unit Size | Cabinet Height | Single & Double Supply | | | |
|---|----------------------------|----------------|------------------------|-----------|-----------------|-----------------|
| | | | W | H | A | B |
| Tandem Primary & Secondary Up-sized Units | 03 or 04 mated to 06 or 08 | Standard | 18" (457) | 12" (305) | 19 11/16" (500) | 13 11/16" (348) |
| | 03 or 04 mated to 10 or 12 | Standard | 22" (559) | 14" (356) | 23 11/16" (602) | 15 11/16" (398) |
| | 06 or 08 mated to 10 or 12 | Standard | 22" (559) | 14" (356) | 23 11/16" (602) | 15 11/16" (398) |

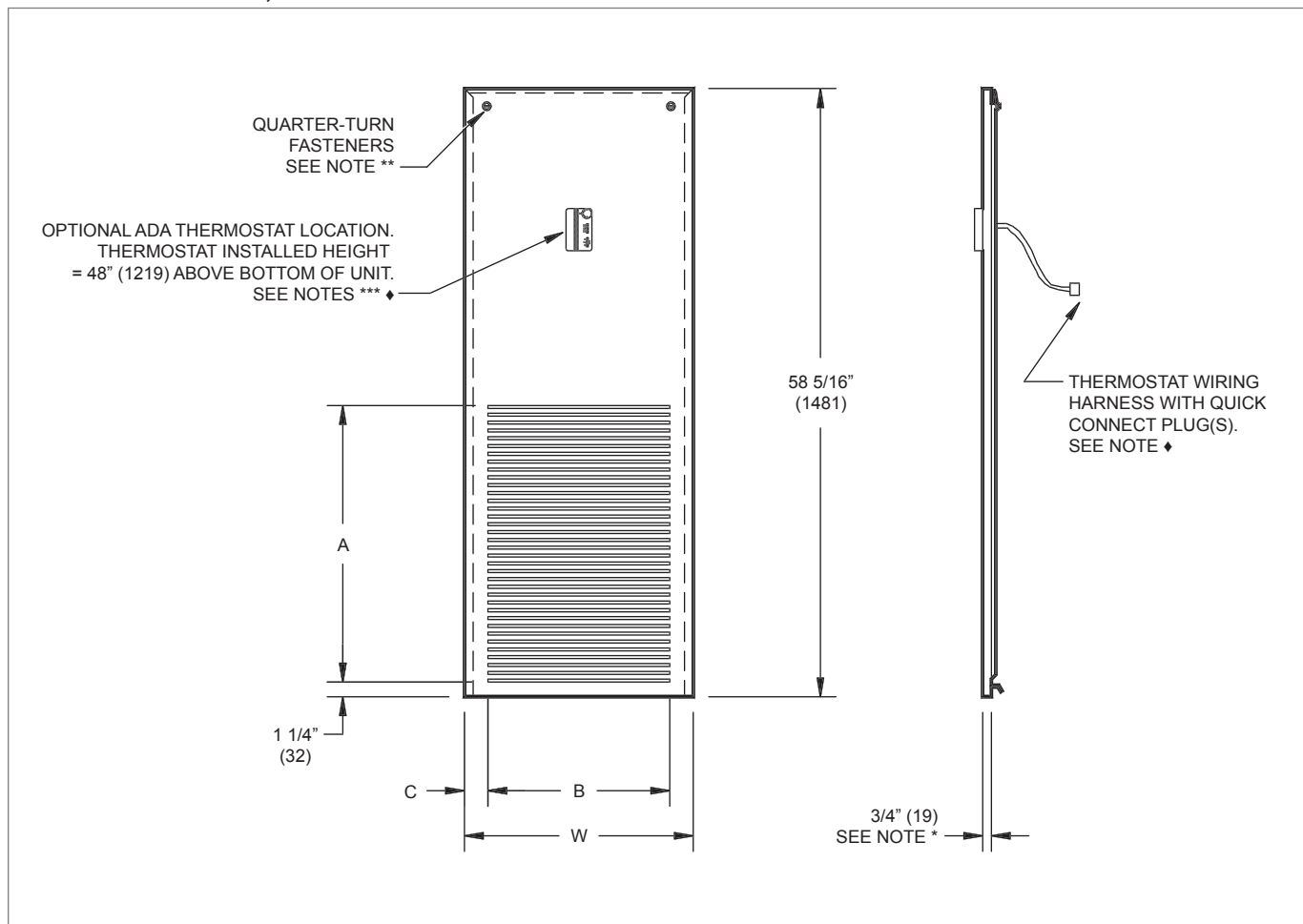
NOTES: All dimensions are in inches (millimeters) and are +/- 1/4" (6mm). Discharge grilles are shipped loose for field installation. Construction is roll formed aluminum frame and blades. Standard finish is powder coat baked enamel. Color is "Pearl White Satin". Installation of grilles on adjacent unit sides may require furring one side away from unit to prevent interference of frames.

FAN COILS

KVP SERIES

KVP Series Return Air Panel Dimensional Information

KVP SERIES STAMPED, LOUVERED FRONT RETURN AIR PANEL FRONT AND SIDE VIEWS



STANDARD SIZE DIMENSIONAL REFERENCES

| Unit Size | W | A | B | C |
|-----------|---------------|---------------|-----------|-------------|
| 03 - 04 | 17 1/2" (445) | 24 1/8" (613) | 15" (381) | 1 1/4" (32) |
| 06 - 08 | 19 1/2" (495) | 24 1/8" (613) | 15" (381) | 2 1/4" (57) |
| 10 - 12 | 23 1/2" (597) | 28 1/2" (724) | 21" (533) | 1 1/4" (32) |

UP-SIZED DIMENSIONAL REFERENCES

| Unit Size | W | A | B | C |
|-------------|---------------|---------------|-----------|-------------|
| 0306 - 0408 | 19 1/2" (495) | 24 1/8" (613) | 15" (381) | 2 1/4" (57) |
| 0310 - 0412 | 23 1/2" (597) | 24 1/8" (613) | 21" (533) | 1 1/4" (32) |
| 0610 - 0812 | 23 1/2" (597) | 24 1/8" (613) | 21" (533) | 1 1/4" (32) |

NOTES: All dimensions are in inches (millimeters) and are +/- 1/4" (6mm). Standard finish is powder coat baked enamel. Color is Pearl White Satin. Sizes shown for "Up-sized" cabinet units used in Tandem Primary and Secondary pairs.

- * Installed wall panels extend approximately 3/4" (19mm) from finished wall surface.
- ** Mounting hardware is shipped loose for field installation.
- *** ADA Thermostat: Actual installed height is determined by unit installation method and may vary.
- ◆ ADA Thermostat is shipped loose for field installation by others.