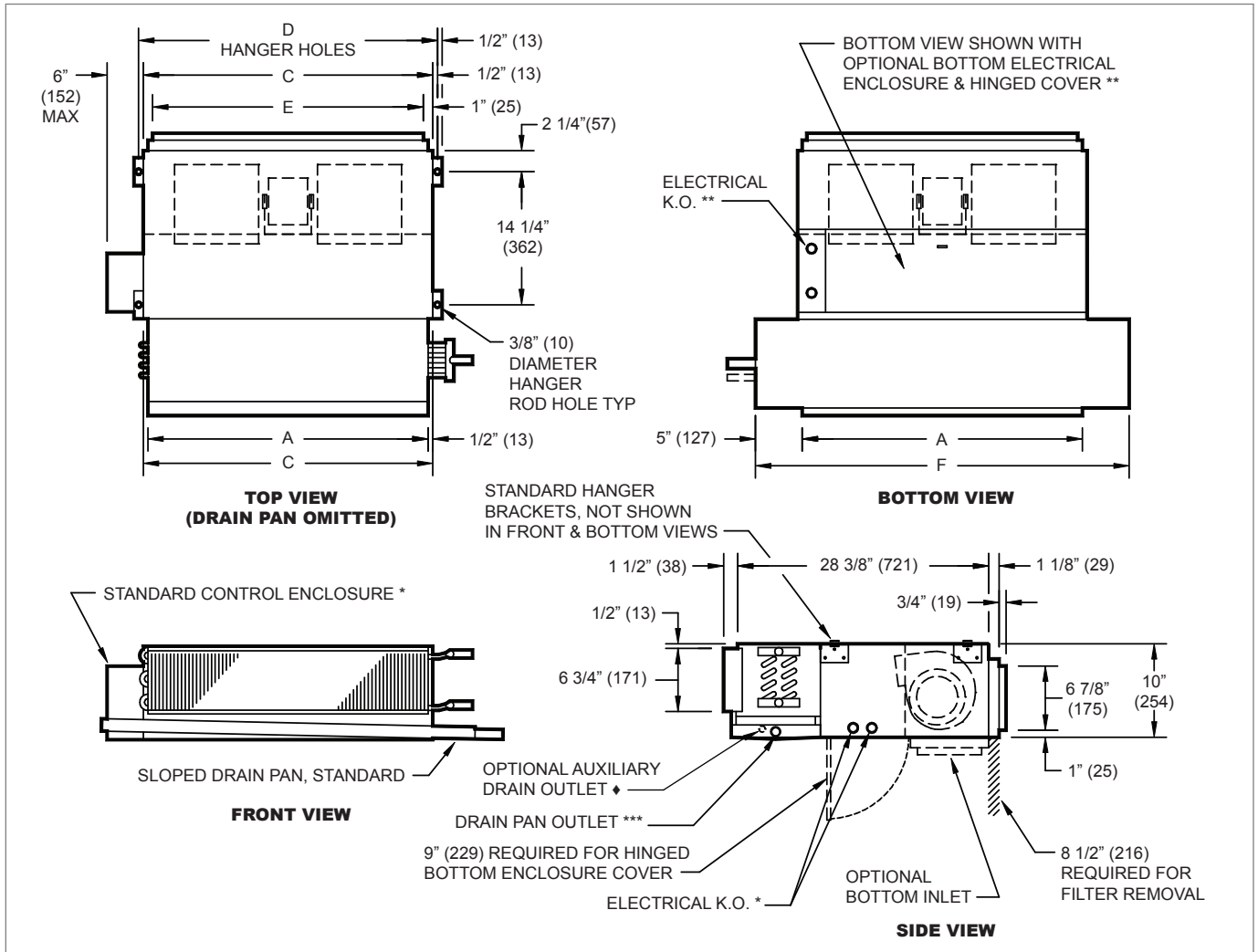


KHFP Dimensional Information
KHFP, TOP, BOTTOM, FRONT, AND SIDE VIEWS

KHFP DIMENSIONAL DETAILS

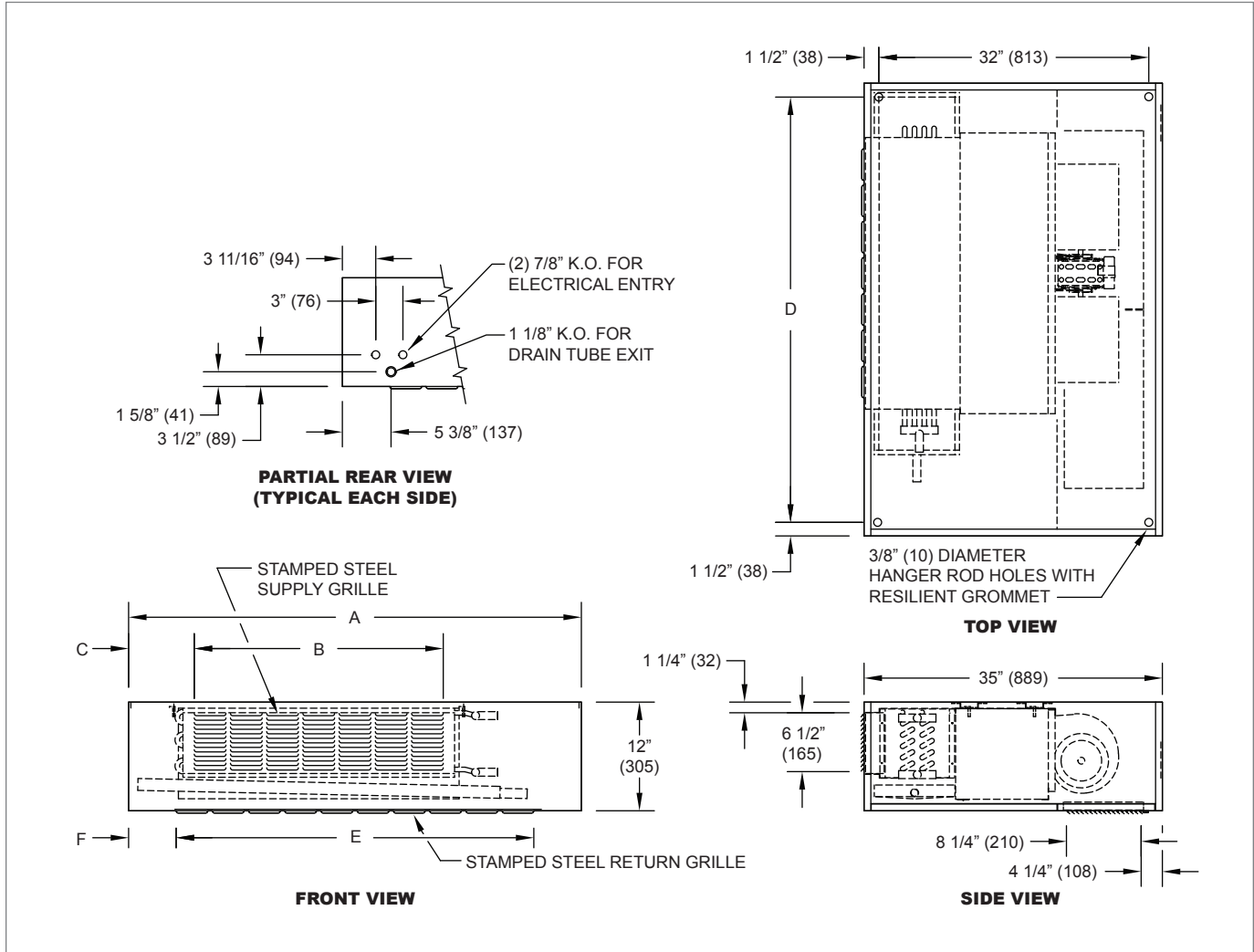
Unit Size	A	C	D	E	F
20	20" (508)	21" (533)	22" (559)	19" (483)	30" (762)
25	26" (660)	27" (686)	28" (711)	25" (635)	36" (914)
30	30" (762)	31" (787)	32" (813)	29" (737)	40" (1016)
40	40" (1016)	41" (1041)	42" (1067)	39" (991)	50" (1270)
50	50" (1270)	51" (1295)	52" (1321)	49" (1245)	60" (1524)
60	60" (1524)	61" (1549)	62" (1575)	59" (1499)	70" (1778)

NOTES: All dimensions in inches (millimeters). All dimensions $\pm 1/4"$ (6mm). Metric values are soft conversion. Left hand unit shown, right hand unit opposite. See coil connection drawings for coil connection sizes and locations.

- * Standard control enclosure is mounted on unit side opposite cooling coil connections. Unit casing includes (2) knockouts on each side. Provide sufficient clearance to access electrical controls and comply with applicable codes and ordinances.
- ** Optional bottom control enclosure with hinged cover replaces standard side mounted enclosure and includes (2) additional knockouts on bottom of unit, on left side.
- *** Standard externally foam coated galvanized steel drain pan has 7/8" ODM copper outlet. Stainless steel drain pan has 3/4" MPT galvanized steel outlet.
- ♦ Auxiliary drain outlet is 5/8" ODM copper or 3/8" MPT galvanized steel respectively.

KHFE Dimensional Information

KHFE, TOP, BOTTOM, FRONT, AND SIDE VIEWS



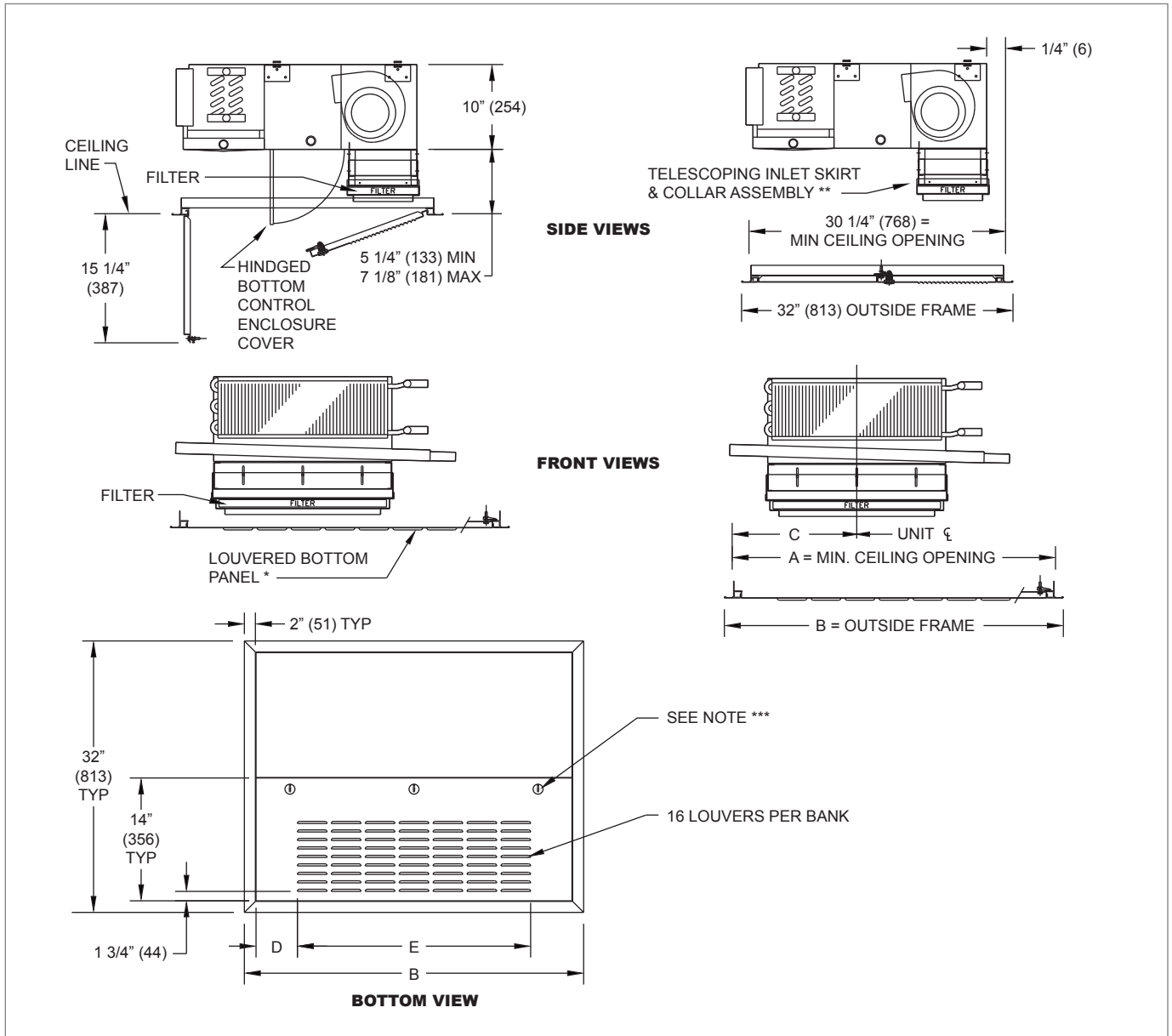
KHFE DIMENSIONAL DETAILS

Unit Size	A	B	C	D	E	F
20	40" (1016)	19 1/2" (495)	6 1/4" (159)	37" (940)	27 1/2" (699)	6 1/4" (159)
25	46" (1168)	23 1/2" (597)	6 1/4" (159)	43" (1092)	35 1/2" (902)	5 1/4" (133)
30	50" (1270)	27 1/2" (699)	7 1/4" (184)	47" (1194)	39 1/2" (1003)	5 1/4" (133)
40	60" (1524)	39 1/2" (1003)	6 1/4" (159)	57" (1448)	47 1/2" (1207)	6 1/4" (159)
50	70" (1778)	47 1/2" (1207)	7 1/4" (184)	67" (1702)	59 1/2" (1511)	5 1/4" (133)
60	80" (2032)	59 1/2" (1511)	6 1/4" (159)	77" (1956)	67 1/2" (1715)	6 1/4" (159)

NOTES: All dimensions in inches (millimeters). All dimensions ±1/4" (6mm). Metric values are soft conversion. Left hand unit shown, right hand unit opposite. Electrical enclosure size and location may vary with optional features. Provide sufficient clearance to access electrical controls and comply with applicable codes and ordinances. Drain piping should be routed through casing opening indicated to provide proper drain slope. Louvered bottom panel is hinged and removable for access to filter and fan assembly. Fixed bottom panel is removable for access to optional electrical enclosure, coil, and drain pan. Internal insulation of field piping may be required. Field piping casing penetrations must be cut in the field to match individual job requirements.

FAN COILS

KIT SERIES

Bottom Panel Dimensional Information
KHFP TELESCOPING BOTTOM PANEL, SIDE, FRONT, AND BOTTOM VIEWS


FAN COILS

KHFP TELESCOPING BOTTOM PANEL DIMENSIONAL DETAILS

Unit Size	A	B	C	D	E
20	38 1/8" (968)	40" (1016)	14 1/2" (368)	4 1/4" (108)	27 1/2" (699)
25	44 1/8" (1121)	46" (1168)	17 1/2" (445)	3 1/4" (83)	35 1/2" (902)
30	48 1/8" (1222)	50" (1270)	19 1/2" (495)	3 1/4" (83)	39 1/2" (1003)
40	58 1/8" (1476)	60" (1524)	24 1/2" (622)	4 1/4" (108)	47 1/2" (1207)
50	68 1/8" (1730)	70" (1778)	29 1/2" (749)	3 1/4" (83)	59 1/2" (1511)
60	78 1/8" (1984)	80" (2032)	34 1/2" (876)	4 1/4" (108)	67 1/2" (1715)

NOTES: All dimensions in inches (millimeters). All dimensions $\pm 1/4"$ (6mm). Metric values are soft conversion. Left hand unit shown, right hand unit opposite.

- * Portions of the inlet louver not directly below unit inlet may require covering in the field on applications where infiltration of ceiling plenum air into space is undesired.
- ** Telescoping skirt and collar assembly must be field adjusted to assure a proper fit between filter frame and louvered inlet panel assembly.
- *** 1/4 turn latch, (2) quantity for standard sizes, (3) quantity for sizes 40-60.