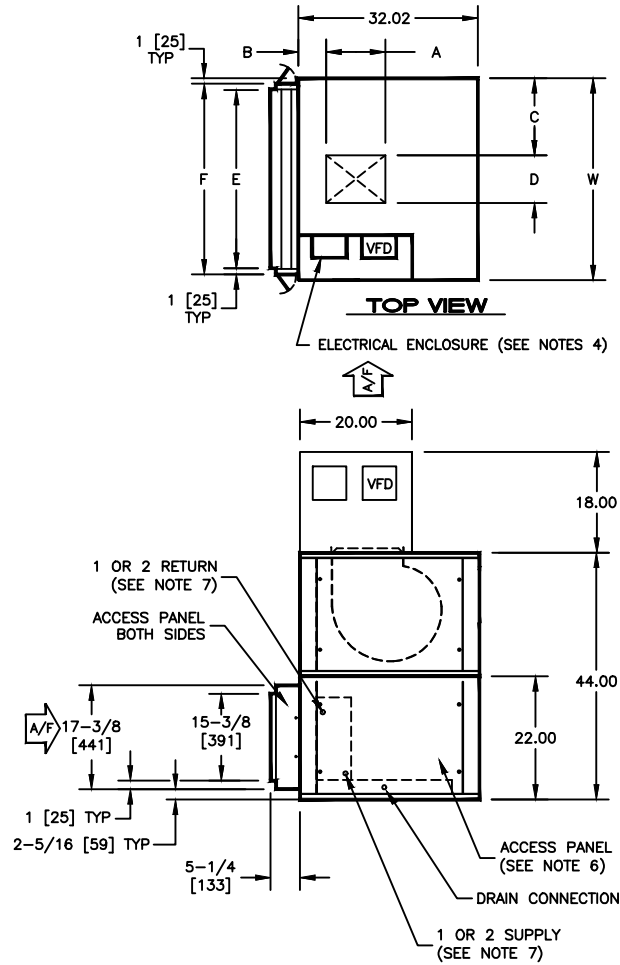


KBM - AIR HANDLER, MODULAR

VCM, VFM, AND CONTROL ENCLOSURE WITH EFM CONFIGURATION, SIZE 03 & 04

SUBMITTAL SHEET



SIZE	A	B	C	D	E	F	W	ACCESS PANEL H X W	WEIGHT (SEE NOTES)	
									SINGLE WALL LBS [kg]	DOUBLE WALL LBS [kg]
03	10-1/2 [267]	5 [127]	13-3/4 [349]	8-1/2 [216]	32 [813]	34 [864]	36 [914]	20 X 26 [508 X 660]	220 [99]	285 [129]
	11-5/8 [295]	5 [127]	17-1/16 [433]	9-7/8 [251]	40 [1016]	42 [1069]	44 [1118]	20 X 26 [508 X 660]	245 [111]	300 [136]

NOTES:

1. ALL DIMENSIONS ARE INCHES [MM]
2. ALL DIMENSIONS ARE ±1/8" [3]
3. METRIC VALUES ARE SOFT CONVERSION
4. MOTOR/DRIVE LOCATION SPECIFIED LEFT OR RIGHT WITH AIR TO BACK; STANDARD CONTROL ENCLOSURE LOCATION MATCHES MOTOR/DRIVE POSITION
5. COIL AND DRAIN CONNECTIONS SPECIFIED LEFT OR RIGHT WITH AIR TO BACK
6. PANEL WITH COIL CONNECTION PENETRATIONS IS NOT REMOVABLE
7. ONE COIL SHOWN; EACH COIL SHALL HAVE A SUPPLY AND RETURN CONNECTION
8. WEIGHT DOES NOT INCLUDE MOTOR OR COIL WEIGHT
9. ALTERNATE CONTROL ENCLOSURE AND VFD LOCATIONS ARE SUBJECT TO COMPLIANCE WITH NEC 2002 ARTICLE 110.26 AND ARE LIMITED; CONSULT FACTORY FOR AVAILABLE ALTERNATE LOCATION BY APPLICATION
10. OPTIONAL VFD WILL BE LOCATED ON THE SAME SIDE OF THE UNIT AS CONTROL ENCLOSURE; CFD SHALL BE MOUNTED ADJACENT TO OR AS CLOSE TO CONTROL ENCLOSURE AS POSSIBLE, DEPENDING ON UPON UNIT SIZE

Revision Date: 12/14	Form: AHMS15-CG01	Replaces: NEW
----------------------	-------------------	---------------