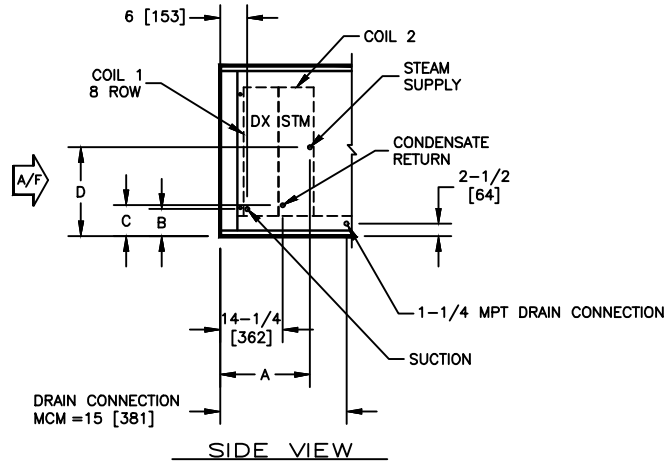


**KBM - AIR HANDLER, MODULAR**

COIL CONNECTION LOCATION - 8 ROW DX COIL IN COOLING WITH STEAM RE-HEAT COIL

**SUBMITTAL SHEET**


SIZE	COIL 2							
	1 ROW				2 ROW			
	A	B	C	D	A	B	C	D
02	16-1/2 [420]	4-1/4 [108]	4-3/4 [121]	11-3/4 [298]	16-1/4 [413]	4-1/4 [108]	5 [127]	11-3/4 [298]
03	16-1/2 [420]	4-1/4 [108]	5 [127]	11-3/4 [298]	16-1/4 [413]	4-1/4 [108]	5 [127]	11-3/4 [298]
04	16-1/2 [420]	4-3/4 [121]	5-1/4 [133]	11-3/4 [298]	16-1/4 [413]	4-3/4 [121]	5-1/4 [133]	11-3/4 [298]
06	16-1/2 [420]	4-3/4 [121]	5-1/4 [133]	15-1/2 [394]	16-1/4 [413]	4-3/4 [121]	5-1/2 [140]	15-1/2 [394]
08	16-1/2 [420]	4-3/4 [121]	6-3/4 [171]	18 [457]	16-1/4 [413]	4-3/4 [121]	5-3/4 [146]	18 [457]
10	16-1/2 [420]	4-3/4 [121]	6-1/2 [165]	18 [457]	16-1/4 [413]	4-3/4 [121]	6-1/2 [165]	18 [457]
12	16-1/2 [420]	5-3/4 [147]	7-1/4 [185]	20-1/2 [521]	16-1/4 [413]	5-3/4 [147]	7-1/4 [184]	20-1/2 [521]
14	16-1/2 [420]	5-3/4 [147]	7-1/4 [185]	21-3/4 [552]	16-1/4 [413]	5-3/4 [147]	7-1/4 [184]	21-3/4 [552]
17	16-1/2 [420]	6 [153]	7-1/2 [191]	21-3/4 [552]	16-1/4 [413]	6 [153]	7-1/2 [191]	21-3/4 [552]

**NOTES:**

1. ALL DIMENSIONS ARE INCHES [MM]
2. ALL DIMENSIONS ARE ±1/8" [3]
3. METRIC VALUES ARE SOFT CONVERSION
4. LIQUID LINE CONNECTION IS LOCATED INSIDE OF CABINET; FIELD PENETRATION OF CABINET IS REQUIRED
5. SEE SELECTION PROGRAM FOR CONNECTION SIZES
6. DX COILS ARE ONLY AVAILABLE IN 3, 4, 6, OR 8 ROWS
7. STEAM COILS ARE NON-DISTRIBUTING AND ARE ONLY AVAILABLE IN 1 & 2 ROWS
8. MODULES FCM AND VCM CAN HAVE UP TO A TOTAL OF 8 ROWS OF COIL
9. MODULE MCM CAN HAVE UP TO A TOTAL OF 10 ROWS OF COIL

Revision Date: 12/14	Form: AHMS05-WC35	Replaces: NEW
----------------------	-------------------	---------------