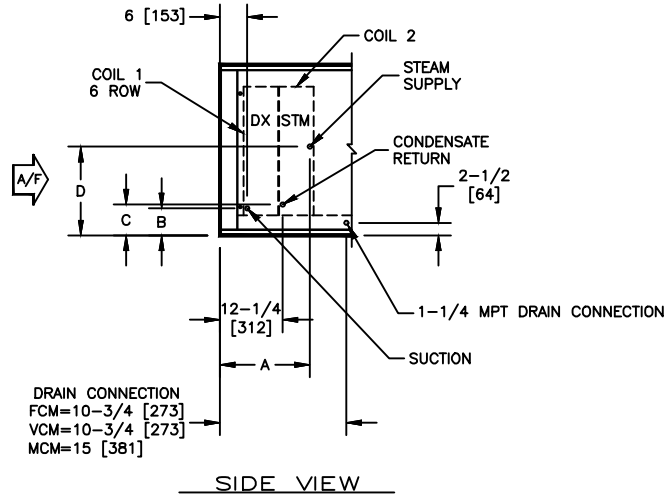


**KBM - AIR HANDLER, MODULAR**

COIL CONNECTION LOCATION - 6 ROW DX COIL IN COOLING WITH STEAM RE-HEAT COIL

**SUBMITTAL SHEET**


SIZE	COIL 2							
	1 ROW				2 ROW			
	A	B	C	D	A	B	C	D
02	14-1/2 [369]	4-1/4 [108]	4-3/4 [121]	11-3/4 [298]	14-1/4 [362]	4-1/4 [108]	5 [127]	11-3/4 [298]
03	14-1/2 [369]	4-1/4 [108]	5 [127]	11-3/4 [298]	14-1/4 [362]	4-1/4 [108]	5 [127]	11-3/4 [298]
04	14-1/2 [369]	4-3/4 [121]	5-1/4 [133]	11-3/4 [298]	14-1/4 [362]	4-3/4 [121]	5-1/4 [133]	11-3/4 [298]
06	14-1/2 [369]	4-3/4 [121]	5-1/4 [133]	15-1/2 [394]	14-1/4 [362]	4-3/4 [121]	5-1/2 [140]	15-1/2 [394]
08	14-1/2 [369]	4-3/4 [121]	6-3/4 [171]	18 [457]	14-1/4 [362]	4-3/4 [121]	5-3/4 [146]	18 [457]
10	14-1/2 [369]	4-3/4 [121]	6-1/2 [165]	18 [457]	14-1/4 [362]	4-3/4 [121]	6-1/2 [165]	18 [457]
12	14-1/2 [369]	5-3/4 [147]	7-1/4 [185]	20-1/2 [521]	14-1/4 [362]	5-3/4 [147]	7-1/4 [184]	20-1/2 [521]
14	14-1/2 [369]	5-3/4 [147]	7-1/4 [185]	21-3/4 [552]	14-1/4 [362]	5-3/4 [147]	7-1/4 [184]	21-3/4 [552]
17	14-1/2 [369]	6 [153]	7-1/2 [191]	21-3/4 [552]	14-1/4 [362]	6 [153]	7-1/2 [191]	21-3/4 [552]

**NOTES:**

- ALL DIMENSIONS ARE INCHES [MM]
- ALL DIMENSIONS ARE  $\pm 1/8"$  [3]
- METRIC VALUES ARE SOFT CONVERSION
- LIQUID LINE CONNECTION IS LOCATED INSIDE OF CABINET; FIELD PENETRATION OF CABINET IS REQUIRED
- SEE SELECTION PROGRAM FOR CONNECTION SIZES
- DX COILS ARE ONLY AVAILABLE IN 3, 4, 6, OR 8 ROWS
- STEAM COILS ARE NON-DISTRIBUTING AND ARE ONLY AVAILABLE IN 1 & 2 ROWS
- MODULES FCM AND VCM CAN HAVE UP TO A TOTAL OF 8 ROWS OF COIL
- MODULE MCM CAN HAVE UP TO A TOTAL OF 10 ROWS OF COIL

Revision Date: 12/14	Form: AHMS05-WC34	Replaces: NEW
----------------------	-------------------	---------------