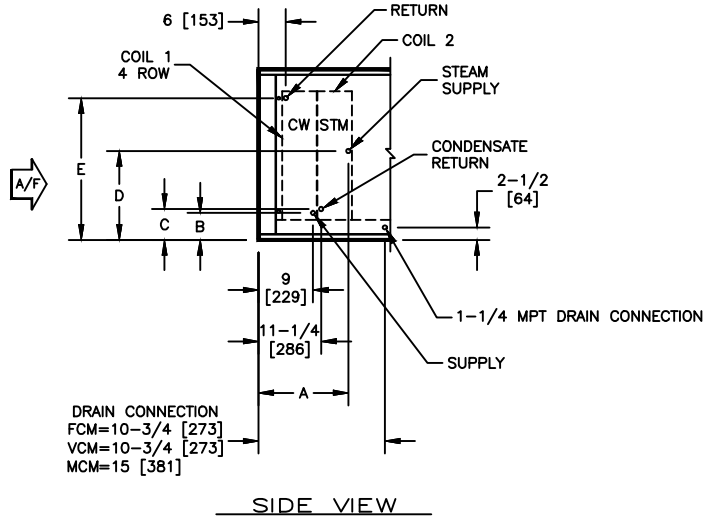


KBM - AIR HANDLER, MODULAR

COIL CONNECTION LOCATION - 4 ROW WATER COIL IN COOLING WITH STEAM RE-HEAT COIL

SUBMITTAL SHEET


SIZE	COIL 2									
	1 ROW					2 ROW				
	A	B	C	D	E	A	B	C	D	E
02	13-1/2 [343]	4-1/4 [108]	4-3/4 [121]	11-3/4 [298]	16-3/4 [425]	13-1/4 [337]	4-1/4 [108]	5 [127]	11-3/4 [298]	16-3/4 [425]
03	13-1/2 [343]	4-1/4 [108]	5 [127]	11-3/4 [298]	16-3/4 [425]	13-1/4 [337]	4-1/4 [108]	5 [127]	11-3/4 [298]	16-3/4 [425]
04	13-1/2 [343]	4-3/4 [121]	5-1/4 [133]	11-3/4 [298]	17 [432]	13-1/4 [337]	4-3/4 [121]	5-1/4 [133]	11-3/4 [298]	17 [432]
06	13-1/2 [343]	4-3/4 [121]	5-1/4 [133]	15-1/2 [394]	24-1/2 [622]	13-1/4 [337]	4-3/4 [121]	5-1/2 [140]	15-1/2 [394]	24-1/2 [622]
08	13-1/2 [343]	4-3/4 [121]	6-3/4 [171]	18 [457]	29-3/4 [756]	13-1/4 [337]	4-3/4 [121]	5-3/4 [146]	18 [457]	29-3/4 [756]
10	13-1/2 [343]	4-3/4 [121]	6-1/2 [165]	18 [457]	29-1/2 [749]	13-1/4 [337]	4-3/4 [121]	6-1/2 [165]	18 [457]	29-1/2 [749]
12	13-1/2 [343]	5-3/4 [147]	7-1/4 [185]	20-1/2 [521]	35-1/4 [895]	13-1/4 [337]	5-3/4 [147]	7-1/4 [184]	20-1/2 [521]	35-1/4 [895]
14	13-1/2 [343]	5-3/4 [147]	7-1/4 [185]	21-3/4 [552]	37-3/4 [959]	13-1/4 [337]	5-3/4 [147]	7-1/4 [184]	21-3/4 [552]	37-3/4 [959]
17	13-1/2 [343]	6 [153]	7-1/2 [191]	21-3/4 [552]	38 [965]	13-1/4 [337]	6 [153]	7-1/2 [191]	21-3/4 [552]	38 [965]

NOTES:

1. ALL DIMENSIONS ARE INCHES [MM]
2. ALL DIMENSIONS ARE ±1/8" [3]
3. METRIC VALUES ARE SOFT CONVERSION
4. SEE SELECTION PROGRAM FOR CONNECTION SIZES
5. CHILLED WATER COILS ARE ONLY AVAILABLE IN 4, 6, OR 8 ROWS
6. STEAM COILS ARE NON-DISTRIBUTING AND ARE ONLY AVAILABLE IN 1 & 2 ROWS
7. MODULES FCM AND VCM CAN HAVE UP TO A TOTAL OF 8 ROWS OF COIL
8. MODULE MCM CAN HAVE UP TO A TOTAL OF 10 ROWS OF COIL

Revision Date: 12/14	Form: AHMS05-WC29	Replaces: NEW
----------------------	-------------------	---------------