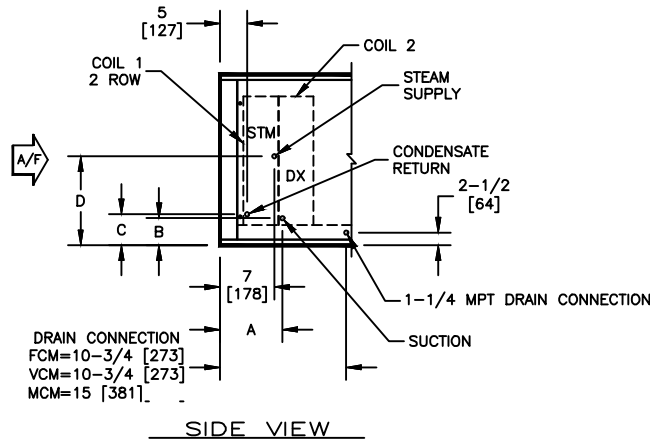


**KBM - AIR HANDLER, MODULAR**

COIL CONNECTION LOCATION - 2 ROW STEAM COIL IN PRE-HEAT WITH DX COIL IN COOLING

**SUBMITTAL SHEET**


SIZE	3 ROW				4 ROW				6 ROW				8 ROW			
	A	B	C	D	A	B	C	D	A	B	C	D	A	B	C	D
02	9-1/4 [235]	4-1/4 [108]	5 [127]	11-3/4 [298]	9-1/4 [235]	5 [127]	5 [127]	11-3/4 [298]	8-3/4 [223]	5 [127]	5 [127]	11-3/4 [298]	8-3/4 [223]	5 [127]	5 [127]	11-3/4 [298]
03	9-1/4 [235]	4-1/4 [108]	5 [127]	11-3/4 [298]	9-1/4 [235]	5 [127]	5 [127]	11-3/4 [298]	8-3/4 [223]	5 [127]	5 [127]	11-3/4 [298]	8-3/4 [223]	5 [127]	5 [127]	11-3/4 [298]
04	9-1/4 [235]	4-3/4 [121]	5-1/4 [133]	11-3/4 [298]	9-1/4 [235]	5-1/4 [133]	5-1/4 [133]	11-3/4 [298]	8-3/4 [223]	5-1/4 [133]	5-1/4 [133]	11-3/4 [298]	8-3/4 [223]	5-1/2 [140]	5-1/4 [133]	11-3/4 [298]
06	9-1/4 [235]	4-3/4 [121]	5-1/2 [140]	15-1/2 [394]	9-1/4 [235]	5-1/2 [140]	5-1/2 [140]	15-1/2 [394]	8-3/4 [223]	6-3/4 [172]	5-1/2 [140]	15-1/2 [394]	8-3/4 [223]	5-1/2 [140]	5-1/2 [140]	15-1/2 [394]
08	9-1/4 [235]	4-3/4 [121]	5-3/4 [146]	18 [457]	9-1/4 [235]	5-1/2 [140]	5-3/4 [146]	18 [457]	8-3/4 [223]	5-1/2 [140]	5-3/4 [146]	18 [457]	8-3/4 [223]	5-1/2 [140]	5-3/4 [146]	18 [457]
10	9-1/4 [235]	4-3/4 [121]	6-1/2 [165]	18 [457]	9-1/4 [235]	5-1/2 [140]	6-1/2 [165]	18 [457]	8-3/4 [223]	5-1/2 [140]	6-1/2 [165]	18 [457]	8-3/4 [223]	5-1/2 [140]	6-1/2 [165]	18 [457]
12	9-1/4 [235]	5-3/4 [147]	7-1/4 [184]	20-1/2 [521]	9-1/4 [235]	6-1/4 [159]	7-1/4 [184]	20-1/2 [521]	8-3/4 [223]	6-1/2 [166]	7-1/4 [184]	20-1/2 [521]	8-3/4 [223]	6-1/4 [159]	7-1/4 [184]	20-1/2 [521]
14	9-1/4 [235]	5-3/4 [147]	7-1/4 [184]	21-3/4 [552]	9-1/4 [235]	6-1/2 [166]	7-1/4 [184]	21-3/4 [552]	8-3/4 [223]	7-1/2 [191]	7-1/4 [184]	21-3/4 [552]	8-3/4 [223]	7-3/4 [197]	7-1/4 [184]	21-3/4 [552]
17	9-1/4 [235]	6 [153]	7-1/2 [191]	21-3/4 [552]	9-1/4 [235]	6-3/4 [172]	7-1/2 [191]	21-3/4 [552]	8-3/4 [223]	8 [204]	7-1/2 [191]	21-3/4 [552]	8-3/4 [223]	7 [178]	7-1/2 [191]	21-3/4 [552]

**NOTES:**

- ALL DIMENSIONS ARE INCHES [MM]
- ALL DIMENSIONS ARE ±1/8" [3]
- METRIC VALUES ARE SOFT CONVERSION
- LIQUID LINE CONNECTION IS LOCATED INSIDE OF CABINET; FIELD PENETRATION OF CABINET IS REQUIRED
- SEE SELECTION PROGRAM FOR CONNECTION SIZES
- DX COILS ARE ONLY AVAILABLE IN 3, 4, 6, OR 8 ROWS
- STEAM COILS ARE NON-DISTRIBUTING AND ARE ONLY AVAILABLE IN 1 & 2 ROWS
- MODULES FCM AND VCM CAN HAVE UP TO A TOTAL OF 8 ROWS OF COIL
- MODULE MCM CAN HAVE UP TO A TOTAL OF 10 ROWS OF COIL

Revision Date:	12/14	Form:	AHMS05-WC28	Replaces:	NEW
----------------	-------	-------	-------------	-----------	-----