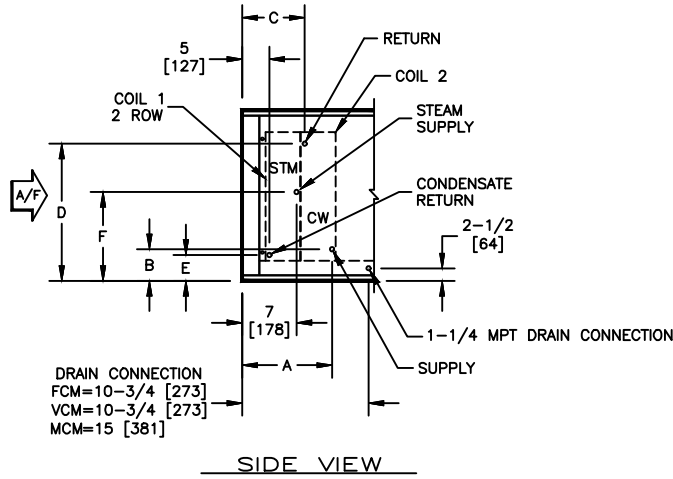


KBM - AIR HANDLER, MODULAR

COIL CONNECTION LOCATION - 2 ROW STEAM COIL IN PRE-HEAT WITH WATER COIL IN COOLING

SUBMITTAL SHEET



SIZE	COIL 2																	
	4 ROW						6 ROW						8 ROW					
	A	B	C	D	E	F	A	B	C	D	E	F	A	B	C	D	E	F
02	12-1/4 [312]	6-1/4 [159]	9-1/4 [235]	16-3/4 [425]	5 [127]	11-3/4 [298]	13 [331]	6-1/4 [159]	9-1/2 [241]	16-3/4 [425]	5 [127]	11-3/4 [298]	15 [381]	6-1/4 [159]	9-1/2 [241]	16-3/4 [425]	5 [127]	11-3/4 [298]
03	12-1/4 [312]	6-1/4 [159]	9-1/4 [235]	16-3/4 [425]	5 [127]	11-3/4 [298]	13 [331]	6-1/4 [159]	9-1/2 [241]	16-3/4 [425]	5 [127]	11-3/4 [298]	15 [381]	6-1/4 [159]	9-1/2 [241]	16-3/4 [425]	5 [127]	11-3/4 [298]
04	12-1/4 [312]	6-1/2 [165]	9-1/4 [235]	17 [432]	5-1/4 [133]	11-3/4 [298]	13 [331]	6-1/2 [165]	9-1/2 [241]	17 [432]	5-1/4 [133]	11-3/4 [298]	15 [381]	6-1/2 [165]	9-1/2 [241]	17 [432]	5-1/4 [133]	11-3/4 [298]
06	12-1/4 [312]	6-1/2 [165]	9-1/4 [235]	24-1/2 [622]	5-1/2 [140]	15-1/2 [394]	13 [331]	6-1/2 [165]	9-1/2 [241]	24-1/2 [622]	5-1/2 [140]	15-1/2 [394]	15 [381]	6-1/2 [165]	9-1/2 [241]	24-1/2 [622]	5-1/2 [140]	15-1/2 [394]
08	12-1/4 [312]	6-3/4 [171]	9-1/4 [235]	29-3/4 [756]	5-3/4 [146]	18 [457]	13 [331]	6-3/4 [171]	9-1/2 [241]	29-3/4 [756]	5-3/4 [146]	18 [457]	15 [381]	6-3/4 [171]	9-1/2 [241]	29-3/4 [756]	5-3/4 [146]	18 [457]
10	12-1/4 [312]	6-1/2 [165]	9-1/4 [235]	29-1/2 [749]	6-1/2 [165]	18 [457]	13 [331]	6-1/2 [165]	9-1/2 [241]	29-1/2 [749]	6-1/2 [165]	18 [457]	15 [381]	6-1/2 [165]	9-1/2 [241]	29-1/2 [749]	6-1/2 [165]	18 [457]
12	12-1/4 [312]	7-1/4 [185]	9-1/4 [235]	35-1/4 [895]	7-1/4 [185]	20-1/2 [521]	13 [331]	7-1/4 [185]	9-1/2 [241]	35-1/4 [895]	7-1/4 [185]	20-1/2 [521]	15 [381]	7-1/4 [185]	9-1/2 [241]	35-1/4 [895]	7-1/4 [185]	20-1/2 [521]
14	12-1/4 [312]	7-1/4 [185]	9-1/4 [235]	37-3/4 [959]	7-1/4 [185]	21-3/4 [552]	13 [331]	7-1/4 [185]	9-1/2 [241]	37-3/4 [959]	7-1/4 [185]	21-3/4 [552]	15 [381]	7-1/4 [185]	9-1/2 [241]	37-3/4 [959]	7-1/4 [185]	21-3/4 [552]
17	12-1/4 [312]	7-1/2 [191]	9-1/4 [235]	38 [965]	7-1/2 [191]	21-3/4 [552]	13 [331]	7-1/2 [191]	9-1/2 [241]	38 [965]	7-1/2 [191]	21-3/4 [552]	15 [381]	7-1/2 [191]	9-1/2 [241]	38 [965]	7-1/2 [191]	21-3/4 [552]

NOTES:

- ALL DIMENSIONS ARE INCHES [MM]
- ALL DIMENSIONS ARE ±1/8" [3]
- METRIC VALUES ARE SOFT CONVERSION
- SEE SELECTION PROGRAM FOR CONNECTION SIZES
- CHILLED WATER COILS ARE ONLY AVAILABLE IN 4, 6, OR 8 ROWS
- STEAM COILS ARE NON-DISTRIBUTING AND ARE ONLY AVAILABLE IN 1 & 2 ROWS
- MODULES FCM AND VCM CAN HAVE UP TO A TOTAL OF 8 ROWS OF COIL
- MODULE MCM CAN HAVE UP TO A TOTAL OF 10 ROWS OF COIL

Revision Date:	12/14	Form:	AHMS05-WC26	Replaces:	NEW
----------------	-------	-------	-------------	-----------	-----