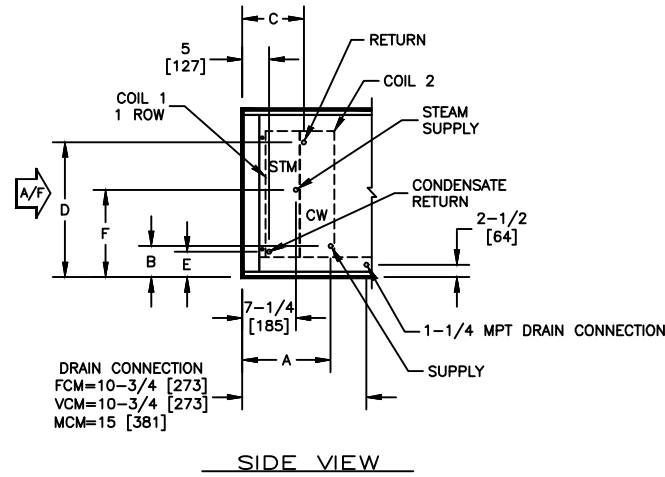


**KBM - AIR HANDLER, MODULAR**

COIL CONNECTION LOCATION - 1 ROW STEAM COIL IN PRE-HEAT WITH WATER COIL IN COOLING

**SUBMITTAL SHEET**



SIZE	COIL 2																	
	4 ROW						6 ROW						8 ROW					
	A	B	C	D	E	F	A	B	C	D	E	F	A	B	C	D	E	F
02	12-1/2 [318]	6-1/4 [159]	9-1/2 [241]	16-3/4 [425]	4-3/4 [121]	11-3/4 [298]	13-1/4 [337]	6-1/4 [159]	9-3/4 [248]	16-3/4 [425]	4-3/4 [121]	11-3/4 [298]	15-1/4 [388]	6-1/4 [159]	9-3/4 [248]	16-3/4 [425]	4-3/4 [121]	11-3/4 [298]
03	12-1/2 [318]	6-1/4 [159]	9-1/2 [241]	16-3/4 [425]	5 [127]	11-3/4 [298]	13-1/4 [337]	6-1/4 [159]	9-3/4 [248]	16-3/4 [425]	5 [127]	11-3/4 [298]	15-1/4 [388]	6-1/4 [159]	9-3/4 [248]	16-3/4 [425]	5 [127]	11-3/4 [298]
04	12-1/2 [318]	6-1/2 [165]	9-1/2 [241]	17 [432]	5-1/4 [133]	11-3/4 [298]	13-1/4 [337]	6-1/2 [165]	9-3/4 [248]	17 [432]	5-1/4 [133]	11-3/4 [298]	15-1/4 [388]	6-1/2 [165]	9-3/4 [248]	17 [432]	5-1/4 [133]	11-3/4 [298]
06	12-1/2 [318]	6-1/2 [165]	9-1/2 [241]	24-1/2 [622]	5-1/4 [133]	15-1/2 [394]	13-1/4 [337]	6-1/2 [165]	9-3/4 [248]	24-1/2 [622]	5-1/4 [133]	15-1/2 [394]	15-1/4 [388]	6-1/2 [165]	9-3/4 [248]	24-1/2 [622]	5-1/4 [133]	15-1/2 [394]
08	12-1/2 [318]	6-3/4 [171]	9-1/2 [241]	29-3/4 [756]	6-3/4 [171]	18 [457]	13-1/4 [337]	6-3/4 [171]	9-3/4 [248]	29-3/4 [756]	6-3/4 [171]	18 [457]	15-1/4 [388]	6-3/4 [171]	9-3/4 [248]	29-3/4 [756]	6-3/4 [171]	18 [457]
10	12-1/2 [318]	6-1/2 [165]	9-1/2 [241]	29-1/2 [749]	6-1/2 [165]	18 [457]	13-1/4 [337]	6-1/2 [165]	9-3/4 [248]	29-1/2 [749]	6-1/2 [165]	18 [457]	15-1/4 [388]	6-1/2 [165]	9-3/4 [248]	29-1/2 [749]	6-1/2 [165]	18 [457]
12	12-1/2 [318]	7-1/4 [185]	9-1/2 [241]	35-1/4 [895]	7-1/4 [185]	20-1/2 [521]	13-1/4 [337]	7-1/4 [185]	9-3/4 [248]	35-1/4 [895]	7-1/4 [185]	20-1/2 [521]	15-1/4 [388]	7-1/4 [185]	9-3/4 [248]	35-1/4 [895]	7-1/4 [185]	20-1/2 [521]
14	12-1/2 [318]	7-1/4 [185]	9-1/2 [241]	37-3/4 [959]	7-1/4 [185]	21-3/4 [552]	13-1/4 [337]	7-1/4 [185]	9-3/4 [248]	37-3/4 [959]	7-1/4 [185]	21-3/4 [552]	15-1/4 [388]	7-1/4 [185]	9-3/4 [248]	37-3/4 [959]	7-1/4 [185]	21-3/4 [552]
17	12-1/2 [318]	7-1/2 [191]	9-1/2 [241]	38 [965]	7-1/2 [191]	21-3/4 [552]	13-1/4 [337]	7-1/2 [191]	9-3/4 [248]	38 [965]	7-1/2 [191]	21-3/4 [552]	15-1/4 [388]	7-1/2 [191]	9-3/4 [248]	38 [965]	7-1/2 [191]	21-3/4 [552]

**NOTES:**

1. ALL DIMENSIONS ARE INCHES [MM]
2. ALL DIMENSIONS ARE ±1/8" [3]
3. METRIC VALUES ARE SOFT CONVERSION
4. SEE SELECTION PROGRAM FOR CONNECTION SIZES
5. CHILLED WATER COILS ARE ONLY AVAILABLE IN 4, 6, OR 8 ROWS
6. STEAM COILS ARE NON-DISTRIBUTING AND ARE ONLY AVAILABLE IN 1 & 2 ROWS
7. MODULES FCM AND VCM CAN HAVE UP TO A TOTAL OF 8 ROWS OF COIL
8. MODULE MCM CAN HAVE UP TO A TOTAL OF 10 ROWS OF COIL

Revision Date: 12/14	Form: AHMS05-WC25	Replaces: NEW
----------------------	-------------------	---------------