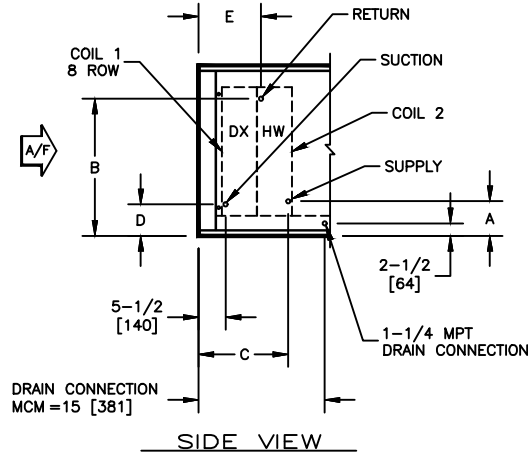


**KBM - AIR HANDLER, MODULAR**

COIL CONNECTION LOCATION - 8 ROW DX COIL IN COOLING WITH WATER RE-HEAT COIL

**SUBMITTAL SHEET**



SIZE	COIL 2									
	1 ROW					2 ROW				
	A	B	C	D	E	A	B	C	D	E
02	6-1/4 [159]	16-3/4 [425]	16-1/2 [420]	4-1/4 [108]	14-1/4 [362]	6-1/4 [159]	16-3/4 [425]	16-1/4 [413]	4-1/4 [108]	14-1/4 [362]
03	6-1/4 [159]	16-3/4 [425]	16-1/2 [420]	4-1/4 [108]	14-1/4 [362]	6-1/4 [159]	16-3/4 [425]	16-1/4 [413]	4-1/4 [108]	14-1/4 [362]
04	6-1/2 [165]	17 [432]	16-1/2 [420]	4-3/4 [121]	14-1/4 [362]	6-1/2 [165]	17 [432]	16-1/4 [413]	4-3/4 [121]	14-1/4 [362]
06	6-1/2 [165]	24-1/2 [622]	16-1/2 [420]	4-3/4 [121]	14-1/4 [362]	6-1/2 [165]	24-1/2 [622]	16-1/4 [413]	4-3/4 [121]	14-1/4 [362]
08	6-3/4 [171]	29-3/4 [756]	16-1/2 [420]	4-3/4 [121]	14-1/4 [362]	6-3/4 [171]	29-3/4 [756]	16-1/4 [413]	4-3/4 [121]	14-1/4 [362]
10	7-1/4 [185]	29-1/2 [749]	16-1/2 [420]	4-3/4 [121]	14-1/4 [362]	7-1/4 [185]	29-1/2 [749]	16-1/4 [413]	4-3/4 [121]	14-1/4 [362]
12	7-1/4 [185]	35-1/4 [895]	16-1/2 [420]	5-3/4 [147]	14-1/4 [362]	7-1/4 [185]	35-1/4 [895]	16-1/4 [413]	5-3/4 [147]	14-1/4 [362]
14	7-1/4 [185]	37-3/4 [959]	16-1/2 [420]	5-3/4 [147]	14-1/4 [362]	7-1/4 [185]	37-3/4 [959]	16-1/4 [413]	5-3/4 [147]	14-1/4 [362]
17	7-1/2 [191]	38 [965]	16-1/2 [420]	6 [153]	14-1/4 [362]	7-1/2 [191]	38 [965]	16-1/4 [413]	6 [153]	14-1/4 [362]

NOTES:

- ALL DIMENSIONS ARE INCHES [MM]
- ALL DIMENSIONS ARE ±1/8" [3]
- METRIC VALUES ARE SOFT CONVERSION
- LIQUID LINE CONNECTION IS LOCATED INSIDE OF CABINET; FIELD PENETRATION OF CABINET IS REQUIRED
- SEE SELECTION PROGRAM FOR CONNECTION SIZES
- DX COILS ARE ONLY AVAILABLE IN 3, 4, 6, OR 8 ROWS
- HOT WATER COILS ARE ONLY AVAILABLE IN 1, 2, 3, OR 4 ROWS
- MODULE MCM CAN HAVE UP TO A TOTAL OF 10 ROWS OF COIL

Revision Date: 12/14	Form: AHMS05-WC21	Replaces: NEW
----------------------	-------------------	---------------