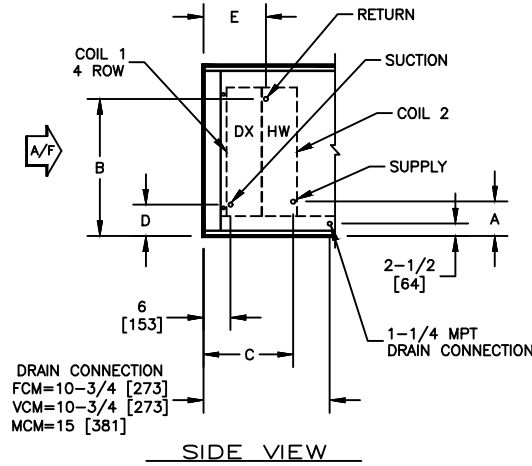


KBM - AIR HANDLER, MODULAR

COIL CONNECTION LOCATION - 4 ROW DX COIL IN COOLING WITH WATER RE-HEAT COIL

SUBMITTAL SHEET


SIZE	COIL 2																			
	1 ROW					2 ROW					3 ROW					4 ROW				
	A	B	C	D	E	A	B	C	D	E	A	B	C	D	E	A	B	C	D	E
02	6-1/4 [159]	16-3/4 [425]	13-1/2 [343]	4-1/4 [108]	11-1/4 [286]	6-1/4 [159]	16-3/4 [425]	13-1/4 [337]	4-1/4 [108]	11-1/4 [286]	6-1/4 [159]	16-3/4 [425]	14-1/4 [362]	4-1/4 [108]	12 [305]	6-1/4 [159]	16-3/4 [425]	15-1/4 [388]	4-1/4 [108]	12-1/4 [312]
03	6-1/4 [159]	16-3/4 [425]	13-1/2 [343]	4-1/4 [108]	11-1/4 [286]	6-1/4 [159]	16-3/4 [425]	13-1/4 [337]	4-1/4 [108]	11-1/4 [286]	6-1/4 [159]	16-3/4 [425]	14-1/4 [362]	4-1/4 [108]	12 [305]	6-1/4 [159]	16-3/4 [425]	15-1/4 [388]	4-1/4 [108]	12-1/4 [312]
04	6-1/2 [165]	17 [432]	13-1/2 [343]	4-3/4 [121]	11-1/4 [286]	6-1/2 [165]	17 [432]	13-1/4 [337]	4-3/4 [121]	11-1/4 [286]	6-1/2 [165]	17 [432]	14-1/4 [362]	4-3/4 [121]	12 [305]	6-1/2 [165]	17 [432]	15-1/4 [388]	4-3/4 [121]	12-1/4 [312]
06	6-1/2 [165]	24-1/2 [622]	13-1/2 [343]	4-3/4 [121]	11-1/4 [286]	6-1/2 [165]	24-1/2 [622]	13-1/4 [337]	4-3/4 [121]	11-1/4 [286]	6-1/2 [165]	24-1/2 [622]	14-1/4 [362]	4-3/4 [121]	12 [305]	6-1/2 [165]	24-1/2 [622]	15-1/4 [388]	4-3/4 [121]	12-1/4 [312]
08	6-3/4 [171]	29-3/4 [756]	13-1/2 [343]	4-3/4 [121]	11-1/4 [286]	6-3/4 [171]	29-3/4 [756]	13-1/4 [337]	4-3/4 [121]	11-1/4 [286]	6-3/4 [171]	29-3/4 [756]	14-1/4 [362]	4-3/4 [121]	12 [305]	6-3/4 [171]	29-3/4 [756]	15-1/4 [388]	4-3/4 [121]	12-1/4 [312]
10	7-1/4 [185]	29-1/2 [749]	13-1/2 [343]	4-3/4 [121]	11-1/4 [286]	7-1/4 [185]	29-1/2 [749]	13-1/4 [337]	4-3/4 [121]	11-1/4 [286]	7-1/4 [185]	29-1/2 [749]	14-1/4 [362]	4-3/4 [121]	12 [305]	7-1/4 [185]	29-1/2 [749]	15-1/4 [388]	4-3/4 [121]	12-1/4 [312]
12	7-1/4 [185]	35-1/4 [895]	13-1/2 [343]	5-3/4 [147]	11-1/4 [286]	7-1/4 [185]	35-1/4 [895]	13-1/4 [337]	5-3/4 [147]	11-1/4 [286]	7-1/4 [185]	35-1/4 [895]	14-1/4 [362]	5-3/4 [147]	12 [305]	7-1/4 [185]	35-1/4 [895]	15-1/4 [388]	5-3/4 [147]	12-1/4 [312]
14	7-1/4 [185]	37-3/4 [959]	13-1/2 [343]	5-3/4 [147]	11-1/4 [286]	7-1/4 [185]	37-3/4 [959]	13-1/4 [337]	5-3/4 [147]	11-1/4 [286]	7-1/4 [185]	37-3/4 [959]	14-1/4 [362]	5-3/4 [147]	12 [305]	7-1/4 [185]	37-3/4 [959]	15-1/4 [388]	5-3/4 [147]	12-1/4 [312]
17	7-1/2 [191]	38 [965]	13-1/2 [343]	6 [153]	11-1/4 [286]	7-1/2 [191]	38 [965]	13-1/4 [337]	6 [153]	11-1/4 [286]	7-1/2 [191]	38 [965]	14-1/4 [362]	6 [153]	12 [305]	7-1/2 [191]	38 [965]	15-1/4 [388]	6 [153]	12-1/4 [312]

NOTES:

- ALL DIMENSIONS ARE INCHES [MM]
- ALL DIMENSIONS ARE ±1/8" [3]
- METRIC VALUES ARE SOFT CONVERSION
- LIQUID LINE CONNECTION IS LOCATED INSIDE OF CABINET; FIELD PENETRATION OF CABINET IS REQUIRED
- SEE SELECTION PROGRAM FOR CONNECTION SIZES
- DX COILS ARE ONLY AVAILABLE IN 3, 4, 6, OR 8 ROWS
- HOT WATER COILS ARE ONLY AVAILABLE IN 1, 2, 3, OR 4 ROWS
- MODULES FCM AND VCM CAN HAVE UP TO A TOTAL OF 8 ROWS OF COIL
- MODULE MCM CAN HAVE UP TO A TOTAL OF 10 ROWS OF COIL

Revision Date:	12/14	Form:	AHMS05-WC19	Replaces:	NEW
----------------	-------	-------	-------------	-----------	-----