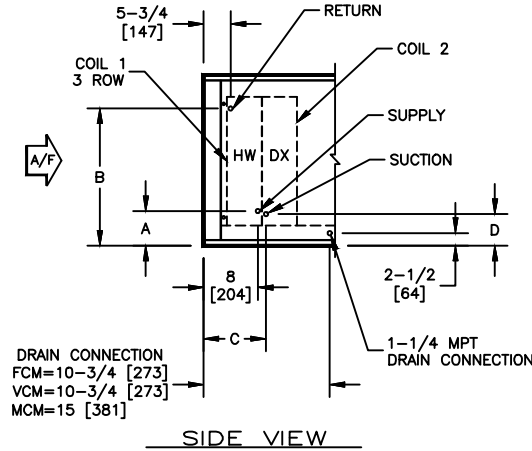


**KBM - AIR HANDLER, MODULAR**

COIL CONNECTION LOCATION - 3 ROW WATER COIL IN PRE-HEAT WITH DX COIL IN COOLING

**SUBMITTAL SHEET**



SIZE	COIL 2											
	3 ROW				4 ROW				6 ROW			
	A	B	C	D	A	B	C	D	A	B	C	D
02	6-1/4 [159]	16-3/4 [425]	11 [280]	4-1/4 [108]	6-1/4 [159]	16-3/4 [425]	11 [280]	5 [127]	6-1/4 [159]	16-3/4 [425]	10-1/2 [267]	5 [127]
03	6-1/4 [159]	16-3/4 [425]	11 [280]	4-1/4 [108]	6-1/4 [159]	16-3/4 [425]	11 [280]	5 [127]	6-1/4 [159]	16-3/4 [425]	10-1/2 [267]	5 [127]
04	6-1/2 [165]	17 [432]	11 [280]	4-3/4 [121]	6-1/2 [165]	17 [432]	11 [280]	5-1/4 [134]	6-1/2 [165]	17 [432]	10-1/2 [267]	5-1/4 [134]
06	6-1/2 [165]	24-1/2 [622]	11 [280]	4-3/4 [121]	6-1/2 [165]	24-1/2 [622]	11 [280]	5-1/2 [140]	6-1/2 [165]	24-1/2 [622]	10-1/2 [267]	6-3/4 [172]
08	6-3/4 [171]	29-3/4 [756]	11 [280]	4-3/4 [121]	6-3/4 [171]	29-3/4 [756]	11 [280]	5-1/2 [140]	6-3/4 [171]	29-3/4 [756]	10-1/2 [267]	5-1/2 [140]
10	7-1/4 [185]	29-1/2 [749]	11 [280]	4-3/4 [121]	7-1/4 [185]	29-1/2 [749]	11 [280]	5-1/2 [140]	7-1/4 [185]	29-1/2 [749]	10-1/2 [267]	5-1/2 [140]
12	7-1/4 [185]	35-1/4 [895]	11 [280]	5-3/4 [147]	7-1/4 [185]	35-1/4 [895]	11 [280]	6-1/4 [159]	7-1/4 [185]	35-1/4 [895]	10-1/2 [267]	6-1/2 [166]
14	7-1/4 [185]	37-3/4 [959]	11 [280]	5-3/4 [147]	7-1/4 [185]	37-3/4 [959]	11 [280]	6-1/2 [166]	7-1/4 [185]	37-3/4 [959]	10-1/2 [267]	7-1/2 [191]
17	7-1/2 [191]	38 [965]	11 [280]	6 [153]	7-1/2 [191]	38 [965]	11 [280]	6-3/4 [172]	7-1/2 [191]	38 [965]	10-1/2 [267]	8 [204]

NOTES:

1. ALL DIMENSIONS ARE INCHES [MM]
2. ALL DIMENSIONS ARE ±1/8" [3]
3. METRIC VALUES ARE SOFT CONVERSION
4. LIQUID LINE CONNECTION IS LOCATED INSIDE OF CABINET; FIELD PENETRATION OF CABINET IS REQUIRED
5. SEE SELECTION PROGRAM FOR CONNECTION SIZES
6. DX COILS ARE ONLY AVAILABLE IN 3, 4, 6, OR 8 ROWS
7. HOT WATER COILS ARE ONLY AVAILABLE IN 1, 2, 3, OR 4 ROWS
8. MODULES FCM AND VCM CAN HAVE UP TO A TOTAL OF 8 ROWS OF COIL
9. MODULE MCM CAN HAVE UP TO A TOTAL OF 10 ROWS OF COIL

Revision Date: 12/14	Form: AHMS05-WC16	Replaces: NEW
----------------------	-------------------	---------------