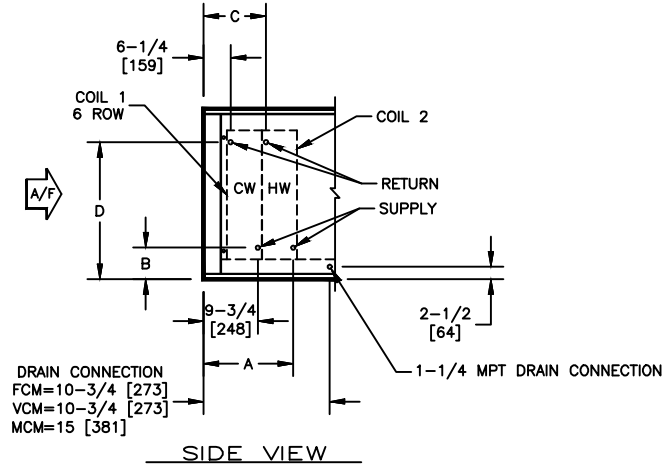


KBM - AIR HANDLER, MODULAR

COIL CONNECTION LOCATION - 6 ROW WATER COIL IN COOLING WITH WATER RE-HEAT COIL

SUBMITTAL SHEET



SIZE	COIL 2															
	1 ROW				2 ROW				3 ROW				4 ROW			
	A	B	C	D	A	B	C	D	A	B	C	D	A	B	C	D
02	14-1/2 [369]	6-1/4 [159]	12-1/4 [312]	16-3/4 [425]	14-1/4 [362]	6-1/4 [159]	12-1/4 [312]	16-3/4 [425]	15-1/4 [388]	6-1/4 [159]	13 [331]	16-3/4 [425]	16-1/4 [416]	6-1/4 [159]	13-1/4 [337]	16-3/4 [425]
03	14-1/2 [369]	6-1/4 [159]	12-1/4 [312]	16-3/4 [425]	14-1/4 [362]	6-1/4 [159]	12-1/4 [312]	16-3/4 [425]	15-1/4 [388]	6-1/4 [159]	13 [331]	16-3/4 [425]	16-1/4 [416]	6-1/4 [159]	13-1/4 [337]	16-3/4 [425]
04	14-1/2 [369]	6-1/2 [165]	12-1/4 [312]	17 [432]	14-1/4 [362]	6-1/2 [165]	12-1/4 [312]	17 [432]	15-1/4 [388]	6-1/2 [165]	13 [331]	17 [432]	16-1/4 [416]	6-1/2 [165]	13-1/4 [337]	17 [432]
06	14-1/2 [369]	6-1/2 [165]	12-1/4 [312]	24-1/2 [622]	14-1/4 [362]	6-1/2 [165]	12-1/4 [312]	24-1/2 [622]	15-1/4 [388]	6-1/2 [165]	13 [331]	24-1/2 [622]	16-1/4 [416]	6-1/2 [165]	13-1/4 [337]	24-1/2 [622]
08	14-1/2 [369]	6-3/4 [171]	12-1/4 [312]	29-3/4 [756]	14-1/4 [362]	6-3/4 [171]	12-1/4 [312]	29-3/4 [756]	15-1/4 [388]	6-3/4 [171]	13 [331]	29-3/4 [756]	16-1/4 [416]	6-3/4 [171]	13-1/4 [337]	29-3/4 [756]
10	14-1/2 [369]	7-1/4 [185]	12-1/4 [312]	29-1/2 [749]	14-1/4 [362]	7-1/4 [185]	12-1/4 [312]	29-1/2 [749]	15-1/4 [388]	7-1/4 [185]	13 [331]	29-1/2 [749]	16-1/4 [416]	7-1/4 [185]	13-1/4 [337]	29-1/2 [749]
12	14-1/2 [369]	7-1/4 [185]	12-1/4 [312]	35-1/4 [895]	14-1/4 [362]	7-1/4 [185]	12-1/4 [312]	35-1/4 [895]	15-1/4 [388]	7-1/4 [185]	13 [331]	35-1/4 [895]	16-1/4 [416]	7-1/4 [185]	13-1/4 [337]	35-1/4 [895]
14	14-1/2 [369]	7-1/4 [185]	12-1/4 [312]	37-3/4 [959]	14-1/4 [362]	7-1/4 [185]	12-1/4 [312]	37-3/4 [959]	15-1/4 [388]	7-1/4 [185]	13 [331]	37-3/4 [959]	16-1/4 [416]	7-1/4 [185]	13-1/4 [337]	37-3/4 [959]
17	14-1/2 [369]	7-1/2 [191]	12-1/4 [312]	38 [965]	14-1/4 [362]	7-1/2 [191]	12-1/4 [312]	38 [965]	15-1/4 [388]	7-1/2 [191]	13 [331]	38 [965]	16-1/4 [416]	7-1/2 [191]	13-1/4 [337]	38 [965]

NOTES:

1. ALL DIMENSIONS ARE INCHES [MM]
2. ALL DIMENSIONS ARE ±1/8" [3]
3. METRIC VALUES ARE SOFT CONVERSION
4. SEE SELECTION PROGRAM FOR CONNECTION SIZES
5. CHILLED WATER COILS ARE ONLY AVAILABLE IN 4, 6, OR 8 ROWS
6. HOT WATER COILS ARE ONLY AVAILABLE IN 1, 2, 3, OR 4 ROWS
7. MODULES FCM AND VCM CAN HAVE UP TO A TOTAL OF 8 ROWS OF COIL
8. MODULE MCM CAN HAVE UP TO A TOTAL OF 10 ROWS OF COIL

Revision Date: 12/14	Form: AHMS05-WC11	Replaces: NEW
----------------------	-------------------	---------------