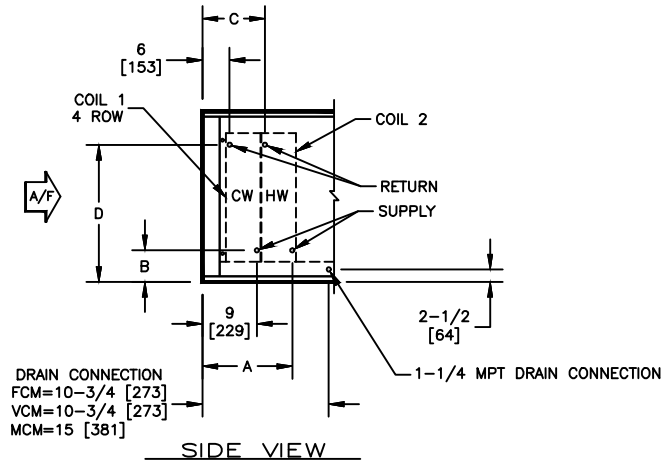


KBM - AIR HANDLER, MODULAR

COIL CONNECTION LOCATION - 4 ROW WATER COIL IN COOLING WITH WATER RE-HEAT COIL

SUBMITTAL SHEET


SIZE	COIL 2															
	1 ROW				2 ROW				3 ROW				4 ROW			
	A	B	C	D	A	B	C	D	A	B	C	D	A	B	C	D
02	13-1/2 [343]	6-1/4 [159]	11-1/4 [286]	16-3/4 [425]	13-1/4 [337]	6-1/4 [159]	11-1/4 [286]	16-3/4 [425]	14-1/4 [362]	6-1/4 [159]	12 [305]	16-3/4 [425]	15-1/4 [387]	6-1/4 [159]	12-1/4 [311]	16-3/4 [425]
03	13-1/2 [343]	6-1/4 [159]	11-1/4 [286]	16-3/4 [425]	13-1/4 [337]	6-1/4 [159]	11-1/4 [286]	16-3/4 [425]	14-1/4 [362]	6-1/4 [159]	12 [305]	16-3/4 [425]	15-1/4 [387]	6-1/4 [159]	12-1/4 [311]	16-3/4 [425]
04	13-1/2 [343]	6-1/2 [165]	11-1/4 [286]	17 [432]	13-1/4 [337]	6-1/2 [165]	11-1/4 [286]	17 [432]	14-1/4 [362]	6-1/2 [165]	12 [305]	17 [432]	15-1/4 [387]	6-1/2 [165]	12-1/4 [311]	17 [432]
06	13-1/2 [343]	6-1/2 [165]	11-1/4 [286]	24-1/2 [622]	13-1/4 [337]	6-1/2 [165]	11-1/4 [286]	24-1/2 [622]	14-1/4 [362]	6-1/2 [165]	12 [305]	24-1/2 [622]	15-1/4 [387]	6-1/2 [165]	12-1/4 [311]	24-1/2 [622]
08	13-1/2 [343]	6-3/4 [171]	11-1/4 [286]	29-3/4 [756]	13-1/4 [337]	6-3/4 [171]	11-1/4 [286]	29-3/4 [756]	14-1/4 [362]	6-3/4 [171]	12 [305]	29-3/4 [756]	15-1/4 [387]	6-3/4 [171]	12-1/4 [311]	29-3/4 [756]
10	13-1/2 [343]	7-1/4 [185]	11-1/4 [286]	29-1/2 [749]	13-1/4 [337]	7-1/4 [185]	11-1/4 [286]	29-1/2 [749]	14-1/4 [362]	7-1/4 [185]	12 [305]	29-1/2 [749]	15-1/4 [387]	7-1/4 [185]	12-1/4 [311]	29-1/2 [749]
12	13-1/2 [343]	7-1/4 [185]	11-1/4 [286]	35-1/4 [895]	13-1/4 [337]	7-1/4 [185]	11-1/4 [286]	35-1/4 [895]	14-1/4 [362]	7-1/4 [185]	12 [305]	35-1/4 [895]	15-1/4 [387]	7-1/4 [185]	12-1/4 [311]	35-1/4 [895]
14	13-1/2 [343]	7-1/4 [185]	11-1/4 [286]	37-3/4 [959]	13-1/4 [337]	7-1/4 [185]	11-1/4 [286]	37-3/4 [959]	14-1/4 [362]	7-1/4 [185]	12 [305]	37-3/4 [959]	15-1/4 [387]	7-1/4 [185]	12-1/4 [311]	37-3/4 [959]
17	13-1/2 [343]	7-1/2 [191]	11-1/4 [286]	38 [965]	13-1/4 [337]	7-1/2 [191]	11-1/4 [286]	38 [965]	14-1/4 [362]	7-1/2 [191]	12 [305]	38 [965]	15-1/4 [387]	7-1/2 [191]	12-1/4 [311]	38 [965]

NOTES:

1. ALL DIMENSIONS ARE INCHES [MM]
2. ALL DIMENSIONS ARE ±1/8" [3]
3. METRIC VALUES ARE SOFT CONVERSION
4. SEE SELECTION PROGRAM FOR CONNECTION SIZES
5. CHILLED WATER COILS ARE ONLY AVAILABLE IN 4, 6, OR 8 ROWS
6. HOT WATER COILS ARE ONLY AVAILABLE IN 1, 2, 3, OR 4 ROWS
7. MODULES FCM AND VCM CAN HAVE UP TO A TOTAL OF 8 ROWS OF COIL
8. MODULE MCM CAN HAVE UP TO A TOTAL OF 10 ROWS OF COIL

Revision Date: 12/14	Form: AHMS05-WC10	Replaces: NEW
----------------------	-------------------	---------------