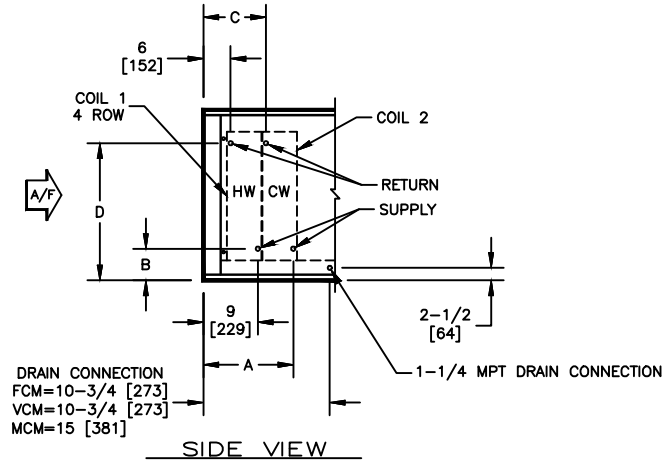


KBM - AIR HANDLER, MODULAR

COIL CONNECTION LOCATION - 4 ROW WATER COIL IN PRE-HEAT WITH WATER COIL IN COOLING

SUBMITTAL SHEET


SIZE	COIL 2							
	4 ROW				6 ROW			
	A	B	C	D	A	B	C	D
02	15-1/4 [388]	6-1/4 [159]	12-1/4 [311]	16-3/4 [425]	16 [407]	6-1/4 [159]	12-1/2 [318]	16-3/4 [425]
03	15-1/4 [388]	6-1/4 [159]	12-1/4 [311]	16-3/4 [425]	16 [407]	6-1/4 [159]	12-1/2 [318]	16-3/4 [425]
04	15-1/4 [388]	6-1/2 [165]	12-1/4 [311]	17 [432]	16 [407]	6-1/2 [165]	12-1/2 [318]	17 [432]
06	15-1/4 [388]	6-1/2 [165]	12-1/4 [311]	24-1/2 [622]	16 [407]	6-1/2 [165]	12-1/2 [318]	24-1/2 [622]
08	15-1/4 [388]	6-3/4 [171]	12-1/4 [311]	29-3/4 [756]	16 [407]	6-3/4 [171]	12-1/2 [318]	29-3/4 [756]
10	15-1/4 [388]	7-1/4 [185]	12-1/4 [311]	29-1/2 [749]	16 [407]	7-1/4 [185]	12-1/2 [318]	29-1/2 [749]
12	15-1/4 [388]	7-1/4 [185]	12-1/4 [311]	35-1/4 [895]	16 [407]	7-1/4 [185]	12-1/2 [318]	35-1/4 [895]
14	15-1/4 [388]	7-1/4 [185]	12-1/4 [311]	37-3/4 [959]	16 [407]	7-1/4 [185]	12-1/2 [318]	37-3/4 [959]
17	15-1/4 [388]	7-1/2 [191]	12-1/4 [311]	38 [965]	16 [407]	7-1/2 [191]	12-1/2 [318]	38 [965]

NOTES:

1. ALL DIMENSIONS ARE INCHES [MM]
2. ALL DIMENSIONS ARE ±1/8" [3]
3. METRIC VALUES ARE SOFT CONVERSION
4. SEE SELECTION PROGRAM FOR CONNECTION SIZES
5. CHILLED WATER COILS ARE ONLY AVAILABLE IN 4, 6, OR 8 ROWS
6. HOT WATER COILS ARE ONLY AVAILABLE IN 1, 2, 3, OR 4 ROWS
7. MODULES FCM AND VCM CAN HAVE UP TO A TOTAL OF 8 ROWS OF COIL
8. MODULE MCM CAN HAVE UP TO A TOTAL OF 10 ROWS OF COIL

Revision Date: 12/14	Form: AHMS05-WC09	Replaces: NEW
----------------------	-------------------	---------------