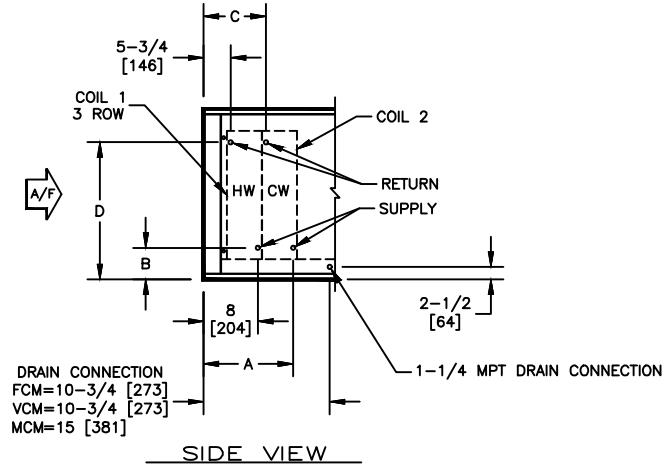


KBM - AIR HANDLER, MODULAR

COIL CONNECTION LOCATION - 3 ROW WATER COIL IN PRE-HEAT WITH WATER COIL IN COOLING

SUBMITTAL SHEET



SIZE	COIL 2				COIL 2			
	4 ROW				6 ROW			
	A	B	C	D	A	B	C	D
02	14 [356]	6-1/4 [159]	11 [279]	16-3/4 [425]	14-3/4 [375]	6-1/4 [159]	11-1/4 [286]	16-3/4 [425]
03	14 [356]	6-1/4 [159]	11 [279]	16-3/4 [425]	14-3/4 [375]	6-1/4 [159]	11-1/4 [286]	16-3/4 [425]
04	14 [356]	6-1/2 [165]	11 [279]	17 [432]	14-3/4 [375]	6-1/2 [165]	11-1/4 [286]	17 [432]
06	14 [356]	6-1/2 [165]	11 [279]	24-1/2 [622]	14-3/4 [375]	6-1/2 [165]	11-1/4 [286]	24-1/2 [622]
08	14 [356]	6-3/4 [171]	11 [279]	29-3/4 [756]	14-3/4 [375]	6-3/4 [171]	11-1/4 [286]	29-3/4 [756]
10	14 [356]	7-1/4 [185]	11 [279]	29-1/2 [749]	14-3/4 [375]	7-1/4 [185]	11-1/4 [286]	29-1/2 [749]
12	14 [356]	7-1/4 [185]	11 [279]	35-1/4 [895]	14-3/4 [375]	7-1/4 [185]	11-1/4 [286]	35-1/4 [895]
14	14 [356]	7-1/4 [185]	11 [279]	37-3/4 [959]	14-3/4 [375]	7-1/4 [185]	11-1/4 [286]	37-3/4 [959]
17	14 [356]	7-1/2 [191]	11 [279]	38 [965]	14-3/4 [375]	7-1/2 [191]	11-1/4 [286]	38 [965]

NOTES:

- ALL DIMENSIONS ARE INCHES [MM]
- ALL DIMENSIONS ARE ±1/8" [3]
- METRIC VALUES ARE SOFT CONVERSION
- SEE SELECTION PROGRAM FOR CONNECTION SIZES
- CHILLED WATER COILS ARE ONLY AVAILABLE IN 4, 6, OR 8 ROWS
- HOT WATER COILS ARE ONLY AVAILABLE IN 1, 2, 3, OR 4 ROWS
- MODULES FCM AND VCM CAN HAVE UP TO A TOTAL OF 8 ROWS OF COIL
- MODULE MCM CAN HAVE UP TO A TOTAL OF 10 ROWS OF COIL

Revision Date: 12/14	Form: AHMS05-WC08	Replaces: NEW
----------------------	-------------------	---------------