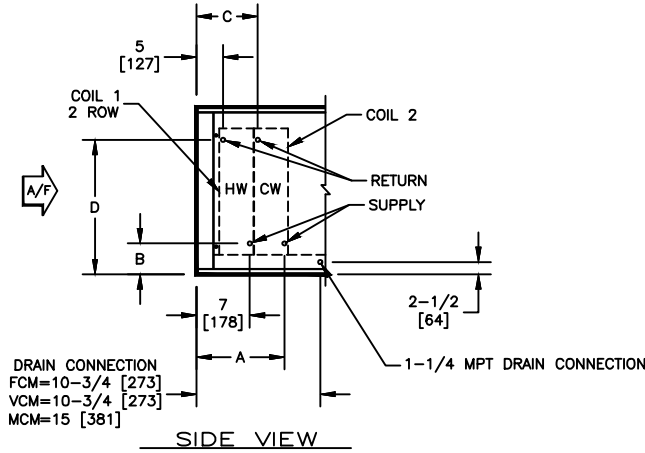


**KBM - AIR HANDLER, MODULAR**

COIL CONNECTION LOCATION - 2 ROW WATER COIL IN PRE-HEAT WITH WATER COIL IN COOLING

**SUBMITTAL SHEET**


SIZE	COIL 2											
	4 ROW				6 ROW				8 ROW			
	A	B	C	D	A	B	C	D	A	B	C	D
02	12-1/4 [312]	6-1/4 [159]	9-1/4 [235]	16-3/4 [425]	13 [331]	6-1/4 [159]	9-1/2 [241]	16-3/4 [425]	15 [381]	6-1/4 [159]	9-1/2 [241]	16-3/4 [425]
03	12-1/4 [312]	6-1/4 [159]	9-1/4 [235]	16-3/4 [425]	13 [331]	6-1/4 [159]	9-1/2 [241]	16-3/4 [425]	15 [381]	6-1/4 [159]	9-1/2 [241]	16-3/4 [425]
04	12-1/4 [312]	6-1/2 [165]	9-1/4 [235]	17 [432]	13 [331]	6-1/2 [165]	9-1/2 [241]	17 [432]	15 [381]	6-1/2 [165]	9-1/2 [241]	17 [432]
06	12-1/4 [312]	6-1/2 [165]	9-1/4 [235]	24-1/2 [622]	13 [331]	6-1/2 [165]	9-1/2 [241]	24-1/2 [622]	15 [381]	6-1/2 [165]	9-1/2 [241]	24-1/2 [622]
08	12-1/4 [312]	6-3/4 [171]	9-1/4 [235]	29-3/4 [756]	13 [331]	6-3/4 [171]	9-1/2 [241]	29-3/4 [756]	15 [381]	6-3/4 [171]	9-1/2 [241]	29-3/4 [756]
10	12-1/4 [312]	7-1/4 [185]	9-1/4 [235]	29-1/2 [749]	13 [331]	7-1/4 [185]	9-1/2 [241]	29-1/2 [749]	15 [381]	7-1/4 [185]	9-1/2 [241]	29-1/2 [749]
12	12-1/4 [312]	7-1/4 [185]	9-1/4 [235]	35-1/4 [895]	13 [331]	7-1/4 [185]	9-1/2 [241]	35-1/4 [895]	15 [381]	7-1/4 [185]	9-1/2 [241]	35-1/4 [895]
14	12-1/4 [312]	7-1/4 [185]	9-1/4 [235]	37-3/4 [959]	13 [331]	7-1/4 [185]	9-1/2 [241]	37-3/4 [959]	15 [381]	7-1/4 [185]	9-1/2 [241]	37-3/4 [959]
17	12-1/4 [312]	7-1/2 [191]	9-1/4 [235]	38 [965]	13 [331]	7-1/2 [191]	9-1/2 [241]	38 [965]	15 [381]	7-1/2 [191]	9-1/2 [241]	38 [965]

**NOTES:**

- ALL DIMENSIONS ARE INCHES [MM]
- ALL DIMENSIONS ARE ±1/8" [3]
- METRIC VALUES ARE SOFT CONVERSION
- SEE SELECTION PROGRAM FOR CONNECTION SIZES
- CHILLED WATER COILS ARE ONLY AVAILABLE IN 4, 6, OR 8 ROWS
- HOT WATER COILS ARE ONLY AVAILABLE IN 1, 2, 3, OR 4 ROWS
- MODULES FCM AND VCM CAN HAVE UP TO A TOTAL OF 8 ROWS OF COIL
- MODULE MCM CAN HAVE UP TO A TOTAL OF 10 ROWS OF COIL

Revision Date: 12/14	Form: AHMS05-WC07	Replaces: NEW
----------------------	-------------------	---------------