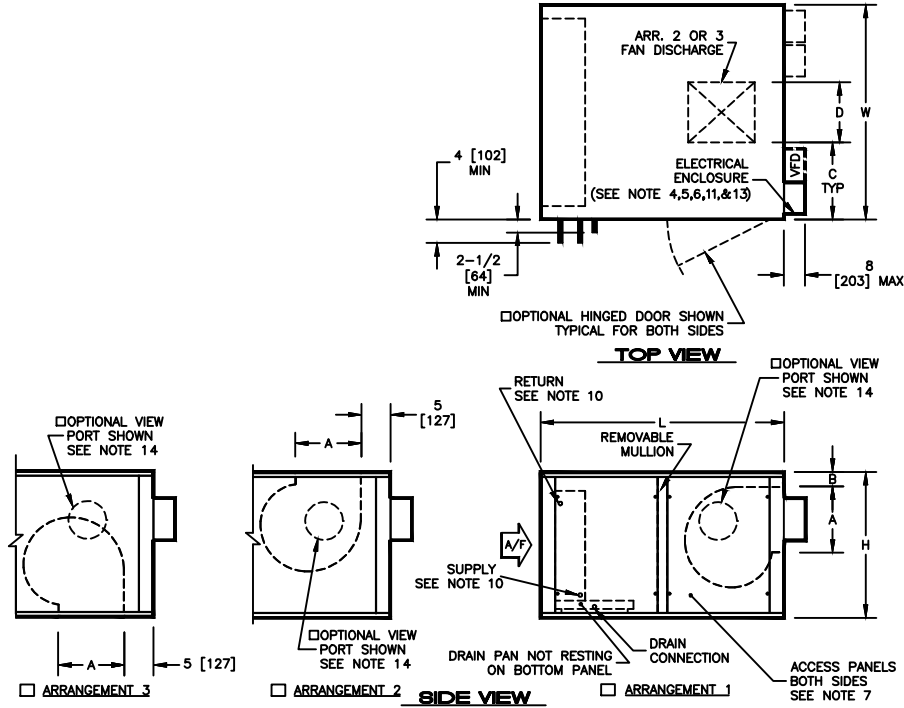


KBM - AIR HANDLER, MODULAR
 FCM - FC FAN AND COIL COMBINATION (HORIZONTAL ONLY)

SUBMITTAL SHEET


SIZE	H	W	L	A	B	C	D	ACCESS PANEL H X W	WEIGHT (SEE NOTES)	
									SINGLE WALL LBS (kg)	DOUBLE WALL LBS (kg)
02	22	30	46	10-1/2	2-3/8	11-7/16	7-1/8	20 X 19	160	205
	[559]	[762]	[1168]	[267]	[603]	[291]	[181]	[508 X 483]	[73]	[93]
03	22	36	46	10-1/2	2-3/8	13-3/4	8-1/2	20 X 19	170	220
	[559]	[914]	[1168]	[267]	[603]	[349]	[216]	[508 X 483]	[77]	[100]
04	22	44	46	11-5/8	2-3/8	17-1/16	9-7/8	20 X 19	185	245
	[559]	[1118]	[1168]	[295]	[603]	[433]	[251]	[508 X 483]	[84]	[111]
06	30	44	50	13-3/4	3	15-3/4	12-1/2	28 X 21	220	295
	[762]	[1118]	[1270]	[349]	[76]	[400]	[318]	[711 X 533]	[100]	[134]
08	34	48	50	13-3/4	3	16-1/16	15-7/8	32 X 21	235	320
	[864]	[1219]	[1270]	[349]	[76]	[408]	[403]	[813 X 533]	[107]	[145]
10	34	58	50	16-1/8	3-3/8	21-9/16	14-7/8	32 X 21	285	380
	[864]	[1473]	[1270]	[410]	[86]	[548]	[378]	[813 X 533]	[130]	[173]
12	44	66	53	19-1/8	8	24-3/16	17-5/8	42 X 22-1/2	365	475
	[1118]	[1676]	[1346]	[486]	[203]	[614]	[448]	[1067 X 572]	[166]	[216]
14	44	70	53	19-1/8	8	23-15/16	22-1/8	42 X 22-1/2	375	490
	[1118]	[1778]	[1346]	[486]	[203]	[608]	[562]	[1067 X 572]	[170]	[223]
17	44	82	53	19-1/8	8	29-15/16	22-1/8	42 X 22-1/2	400	545
	[1118]	[2083]	[1346]	[486]	[203]	[760]	[562]	[1067 X 572]	[182]	[248]

NOTES:

- ALL DIMENSIONS ARE INCHES [MM]
- ALL DIMENSIONS ARE ±1/8" [3]
- METRIC VALUES ARE SOFT CONVERSION
- MOTOR/DRIVE LOCATION SPECIFIED LEFT OR RIGHT WITH AIR TO BACK
- STANDARD CONTROL ENCLOSURE LOCATION MATCHES MOTOR/DRIVE POSITION
- RIGHT HAND UNIT SHOWN
- PANEL WITH COIL CONNECTION PENETRATIONS IS NOT REMOVABLE; PANEL OPPOSITE COIL CONNECTION IS REMOVABLE
- WEIGHT DOES NOT INCLUDE COIL AND MOTOR WEIGHTS; SEE AHMS04-FN05 FOR MOTOR & AHMS05-WC04 FOR COIL WEIGHTS
- COIL AND DRAIN CONNECTIONS SPECIFIED LEFT OR RIGHT WITH AIR TO BACK
- ONE COIL SHOWN; TWO COILS AVAILABLE
- CONTROL ENCLOSURE WILL BE MOUNTED ON SUPPLY FAN MODULE
- ALTERNATE CONTROL ENCLOSURE AND VFD LOCATIONS ARE SUBJECTED TO COMPLIANCE WITH NEC 2002 ARTICLE 110.26 AND ARE LIMITED; CONTACT FACTORY FOR AVAILABLE ALTERNATE LOCATION BY APPLICATION
- OPTIONAL VFD WILL BE LOCATED ON THE SAME SIDE OF THE UNIT AS CONTROL ENCLOSURE; VFD SHALL BE MOUNTED ADJACENT TO OR AS CLOSE TO CONTROL ENCLOSURE AS POSSIBLE, DEPENDING UP ON UNIT SIZE
- A) OPTIONAL VIEWPORT IS ONLY AVAILABLE WITH DOUBLE WALL OPTION
 B) OPTIONAL VIEWPORT IS 8" DIAMETER, DOUBLE PANE, CLEAR POLYCARBONATE, UV RESISTANT, WITH BOTH INTERIOR AND EXTERIOR GASKETING
- OPTIONAL HINGED DOOR IS REMOVABLE, BUT MUST BE OPENED 90 DEGREES FOR REMOVAL

Revision Date: 12/14	Form: AHMS04-FN04	Replaces: NEW
----------------------	-------------------	---------------