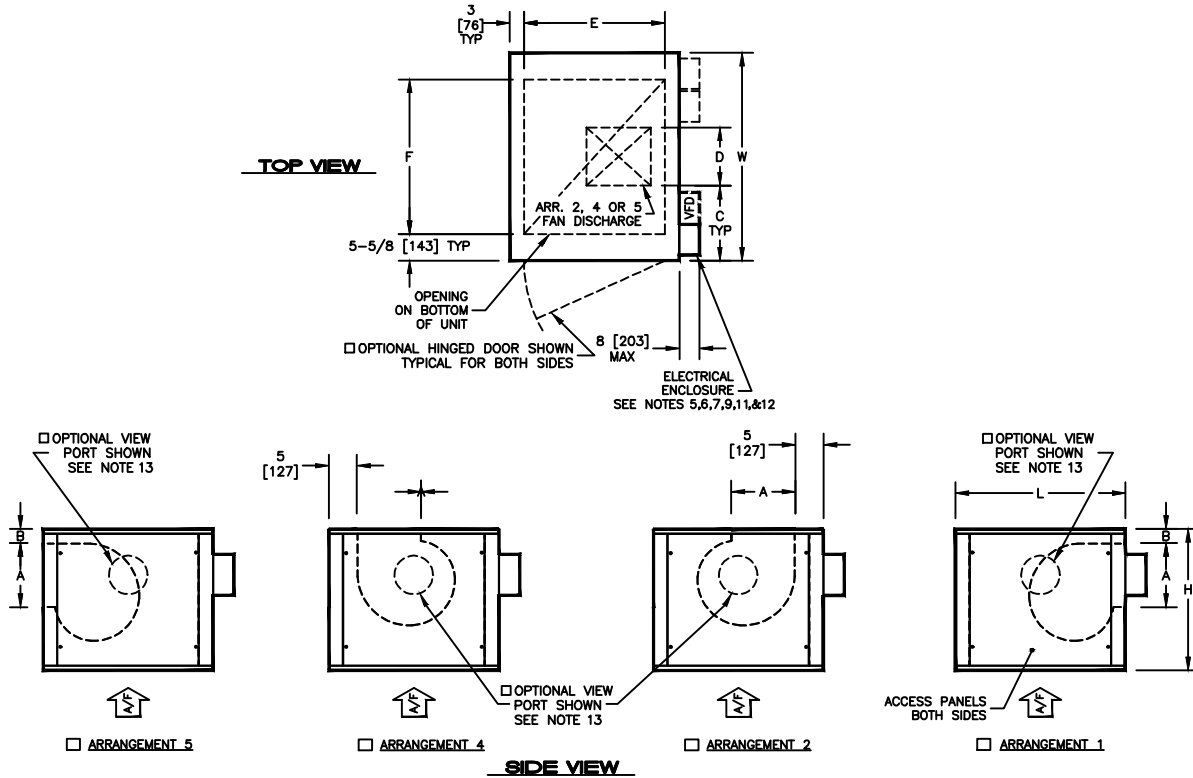


KBM - AIR HANDLER, MODULAR
 VFM - VERTICAL FC FAN

SUBMITTAL SHEET


SIZE	H	W	L	A	B	C	D	E	F	ACCESS PANEL H X W	WEIGHT (SEE NOTES)	
											SINGLE WALL LBS (kg)	DOUBLE WALL LBS (kg)
02	22 [559]	30 [762]	32 [813]	10-1/2 [267]	2-3/8 [603]	11-7/16 [291]	7-1/8 [181]	26 [660]	18-3/4 [476]	20 X 26 [508 X 660]	105 [48]	135 [61]
03	22 [559]	36 [914]	32 [813]	10-1/2 [267]	2-3/8 [603]	13-3/4 [349]	8-1/2 [216]	26 [660]	24-3/4 [629]	20 X 26 [508 X 660]	120 [55]	150 [68]
04	22 [559]	44 [1118]	32 [813]	11-5/8 [295]	2-3/8 [603]	17-1/16 [433]	9-7/8 [251]	26 [660]	32-3/4 [832]	20 X 26 [508 X 660]	135 [61]	165 [75]
06	30 [762]	44 [1118]	36 [914]	13-3/4 [349]	3 [76]	15-3/4 [400]	12-1/2 [318]	30 [762]	32-3/4 [832]	28 X 30 [711 X 762]	175 [80]	220 [100]
08	34 [864]	48 [1219]	36 [914]	13-3/4 [349]	3 [76]	16-1/16 [408]	15-7/8 [403]	30 [762]	36-3/4 [933]	32 X 30 [813 X 762]	205 [93]	260 [118]
10	34 [864]	58 [1473]	36 [914]	16-1/8 [410]	3-3/8 [86]	21-9/16 [548]	14-7/8 [378]	30 [762]	46-3/4 [1187]	32 X 30 [813 X 762]	235 [107]	290 [132]
12	44 [1118]	66 [1676]	40 [101]	19-1/8 [486]	8 [203]	24-3/16 [614]	17-5/8 [448]	34 [864]	54-3/4 [1391]	42 X 34 [1067 X 864]	295 [134]	375 [170]
14	44 [1118]	70 [1778]	40 [101]	19-1/8 [486]	8 [203]	23-15/16 [608]	22-1/8 [562]	34 [864]	58-3/4 [1492]	42 X 34 [1067 X 864]	310 [141]	390 [177]
17	44 [1118]	82 [2083]	40 [101]	19-1/8 [486]	8 [203]	29-15/16 [760]	22-1/8 [562]	34 [864]	70-3/4 [1797]	42 X 34 [1067 X 864]	370 [168]	455 [209]

NOTES:

- ALL DIMENSIONS ARE INCHES [MM]
- ALL DIMENSIONS ARE ±1/8" [3]
- METRIC VALUES ARE SOFT CONVERSION
- ALL DRAWINGS SUBJECT TO CHANGE WITHOUT PRIOR NOTICE
- MOTOR/DRIVE LOCATION SPECIFIED LEFT OR RIGHT WITH AIR TO BACK
- STANDARD CONTROL ENCLOSURE LOCATION MATCHES MOTOR/DRIVE POSITION.
- RIGHT HAND UNIT SHOWN
- WEIGHT DOES NOT INCLUDE MOTOR WEIGHT; SEE AHMS05-WC04 FOR COIL & AHMS04-FN04 FOR MOTOR WEIGHTS
- CONTROL ENCLOSURE WILL BE MOUNTED ON SUPPLY FAN MODULE
- ALTERNATE CONTROL ENCLOSURE AND VFD LOCATIONS ARE SUBJECT TO COMPLIANCE WITH NEC 2002 ARTICLE 110.26 AND ARE LIMITED; CONTACT FACTORY FOR AVAILABLE ALTERNATE LOCATION Y BY APPLICATION
- OPTIONAL VFD WILL BE LOCATED ON THE SAME SIDE OF THE UNIT AS CONTROL ENCLOSURE
- VFD SHALL BE MOUNTED ADJACENT TO OR AS CLOSE TO CONTROL ENCLOSURE AS POSSIBLE, DEPENDING UPON UNIT SIZE
- A) OPTIONAL VIEWPORT IS ONLY AVAILABLE WITH DOUBLE WALL OPTION
B) OPTIONAL VIEWPORT IS 8" DIAMETER, DOUBLE PANE, CLEAR POLYCARBONATE, UV RESISTANT, WITH BOTH INTERIOR AND EXTERIOR GASKETING
- OPTIONAL HINGED DOOR IS REMOVABLE, BUT MUST BE OPENED 90 DEGREES FOR REMOVAL

Revision Date: 11/14	Form: AHMS04-FN02	Replaces: NEW
----------------------	-------------------	---------------