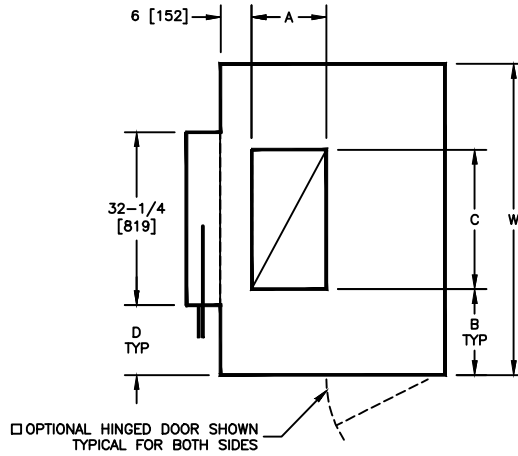
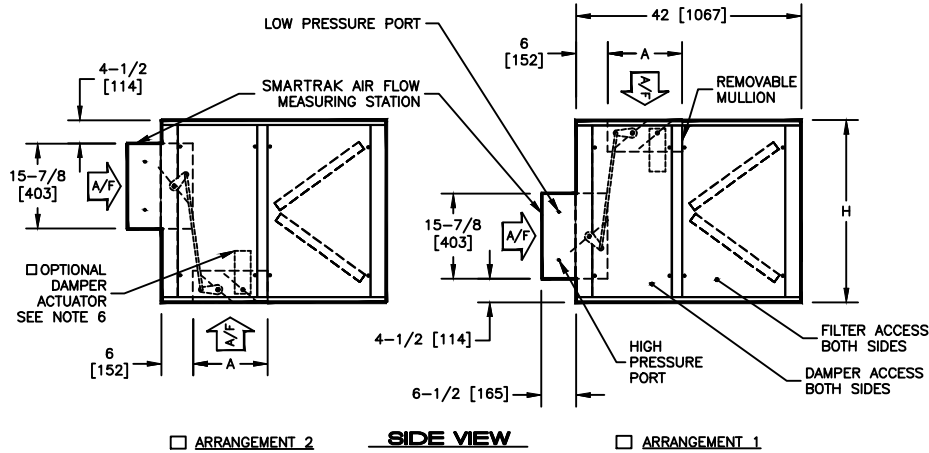


KBM - AIR HANDLER, MODULAR

LFM - LARGE SMARTRAK MIXING BOX WITH V-BANK FILTERS, SIZE 10-12

SUBMITTAL SHEET

 AVAILABLE FILTER OPTIONS:
 2" [51mm], 30% PLEATED (MERV 7)

TOP VIEW

SIDE VIEW

SIZE	H	W	A	B	C	D	ACCESS PANEL		WEIGHT		FILTER SIZES
							DAMPER H X W	FILTER H X W	SINGLE WALL LBS (kg)	DOUBLE WALL LBS (kg)	
10	34	58	14	7	44	12-7/8	32 X 12	32 X 21-1/2	235	315	(2) 16 X 20 (4) 20 X 20
	[864]	[1473]	[356]	[178]	[1118]	[327]	[813 X 305]	[813 X 546]	[107]	[143]	[406 X 508] [508 X 508]
12	44	66	16	10	46	16-7/8	42 X 12	42 X 21-1/2	280	380	(6) 20 X 25
	[1118]	[1676]	[406]	[254]	[1168]	[429]	[1067 X 305]	[1067 X 546]	[127]	[173]	[508 X 635]

NOTES:

- ALL DIMENSIONS ARE INCHES [MM]
- ALL DIMENSIONS ARE ±1/8" [3]
- METRIC VALUES ARE SOFT CONVERSION
- ALL DRAWINGS SUBJECT TO CHANGE WITHOUT PRIOR NOTICE
- DAMPER LINKAGE IS FACTORY PROVIDED AND INSTALLED
- OPTIONAL DAMPER ACTUATOR WILL BE LOCATED ON THE INSIDE OF MODULE ON THE SAME SIDE AS THE CONTROL ENCLOSURE
- RIGHT HAND UNIT SHOWN
- OPTIONAL HINGED DOOR IS REMOVABLE, BUT MUST BE OPENED 90 DEGREES FOR REMOVAL
- HIGH PRESSURE PORT AND LOW PRESSURE PORT TUBING WILL BE RUN TO THE SAME SIDE OF THE MODULE AS THE MOTOR SHEAVE

Revision Date: 11/14	Form: AHMS03-MB08	Replaces: NEW
----------------------	-------------------	---------------