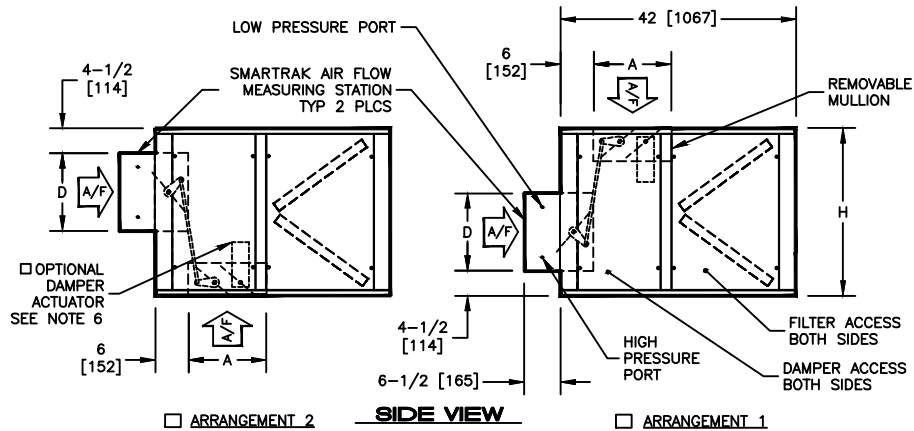
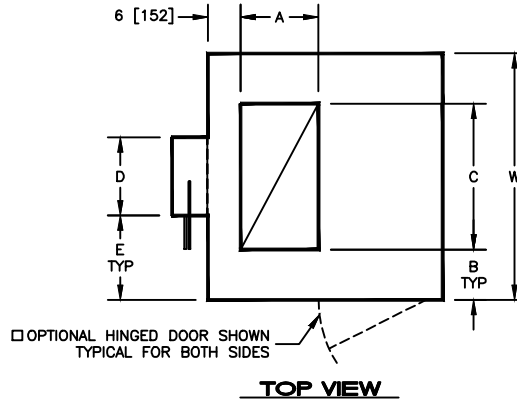


**KBM - AIR HANDLER, MODULAR**  
 LFM - LARGE SMARTRAK MIXING BOX WITH V-BANK FILTERS, SIZE 02-08

**SUBMITTAL SHEET**

 AVAILABLE FILTER OPTIONS:  
 2" [51mm], 30% PLEATED (MERV 7)


SIZE	H	W	A	B	C	D DIAMETER	E	ACCESS PANEL		WEIGHT		FILTER SIZES
								DAMPER H X W	FILTER H X W	SINGLE WALL LBS (kg)	DOUBLE WALL LBS (kg)	
02	22	30	10	9	12	9-7/8	10-1/16	20 X 12	20 X 21-1/2	130	170	(2) 16 X 20
	[559]	[762]	[254]	[229]	[305]	[251]	[256]	[508 X 305]	[508 X 546]	[59]	[77]	[406 X 508]
03	22	36	10	9	18	9-7/8	13-1/16	20 X 12	20 X 21-1/2	145	190	(2) 16 X 25
	[559]	[914]	[254]	[229]	[457]	[251]	[332]	[508 X 305]	[508 X 546]	[66]	[86]	[406 X 635]
04	22	44	10	10	24	11-7/8	16-1/16	20 X 12	20 X 21-1/2	160	220	(2) 20 X 25
	[559]	[1118]	[254]	[254]	[610]	[302]	[408]	[508 X 305]	[508 X 546]	[73]	[100]	[508 X 635]
06	30	44	14	9	26	13-7/8	15-1/16	28 X 12	28 X 21-1/2	210	250	(2) 20 X 20
	[762]	[1118]	[356]	[229]	[660]	[352]	[383]	[711 X 305]	[711 X 546]	[95]	[114]	[508 X 508]
08	34	48	14	6	36	15-7/8	16-1/16	32 X 12	32 X 21-1/2	220	280	(2) 16 X 20 (2) 20 X 25
	[864]	[1219]	[356]	[152]	[914]	[403]	[408]	[813 X 305]	[813 X 546]	[100]	[127]	[406 X 508] [508 X 635]

**NOTES:**

- ALL DIMENSIONS ARE INCHES [MM]
- ALL DIMENSIONS ARE ±1/8" [3]
- METRIC VALUES ARE SOFT CONVERSION
- ALL DRAWINGS SUBJECT TO CHANGE WITHOUT PRIOR NOTICE
- DAMPER LINKAGE IS FACTORY PROVIDED AND INSTALLED
- OPTIONAL DAMPER ACTUATOR WILL BE LOCATED ON THE INSIDE OF MODULE ON THE SAME SIDE AS THE CONTROL ENCLOSURE
- RIGHT HAND UNIT SHOWN
- OPTIONAL HINGED DOOR IS REMOVABLE, BUT MUST BE OPENED 90 DEGREES FOR REMOVAL
- HIGH PRESSURE PORT AND LOW PRESSURE PORT TUBING WILL BE RUN TO THE SAME SIDE OF THE MODULE AS THE MOTOR SHEAVE

Revision Date: 11/14	Form: AHMS03-MB07	Replaces: NEW
----------------------	-------------------	---------------