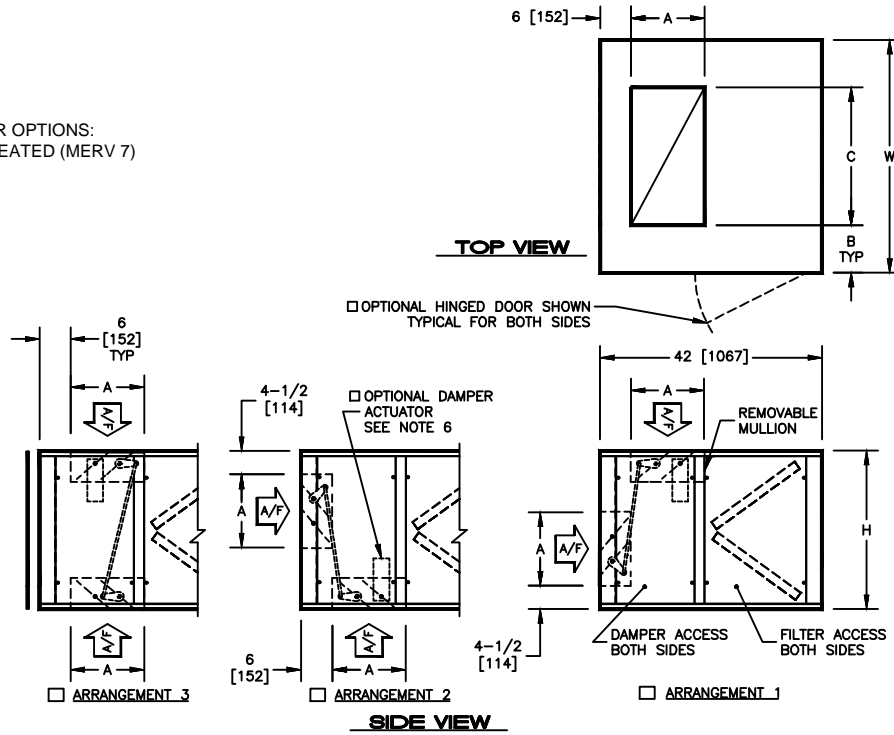


AVAILABLE FILTER OPTIONS:
 2" [51mm], 30% PLEATED (MERV 7)



SIZE	H	W	A	B	C	ACCESS PANEL		WEIGHT		FILTER SIZES
						DAMPER H X W	FILTER H X W	SINGLE WALL LBS (kg)	DOUBLE WALL LBS (kg)	
02	22 [559]	30 [762]	10 [254]	9 [229]	12 [305]	20 X 12 [508 X 305]	20 X 21-1/2 [508 X 546]	130 [59]	170 [77]	(2) 16 X 20 [406 X 508]
03	22 [559]	36 [914]	10 [254]	9 [229]	18 [457]	20 X 12 [508 X 305]	20 X 21-1/2 [508 X 546]	145 [66]	190 [86]	(2) 16 X 25 [406 X 635]
04	22 [559]	44 [1118]	10 [254]	10 [254]	24 [610]	20 X 12 [508 X 305]	20 X 21-1/2 [508 X 546]	160 [73]	220 [100]	(2) 20 X 25 [508 X 635]
06	30 [762]	44 [1118]	14 [356]	9 [229]	26 [660]	28 X 12 [711 X 305]	28 X 21-1/2 [711 X 546]	210 [95]	250 [114]	(4) 20 X 20 [508 X 508]
08	34 [864]	48 [1219]	14 [356]	6 [152]	36 [914]	32 X 12 [813 X 305]	32 X 21-1/2 [813 X 546]	220 [100]	280 [127]	(2) 16 X 20 (2) 20 X 25 [406 X 508] [508 X 635]
10	34 [864]	58 [1473]	14 [356]	7 [178]	44 [1118]	32 X 12 [813 X 305]	32 X 21-1/2 [813 X 546]	235 [107]	315 [143]	(2) 16 X 20 (4) 20 X 20 [406 X 508] [508 X 508]
12	44 [1118]	66 [1676]	16 [406]	10 [254]	46 [1168]	42 X 12 [1067 X 305]	42 X 21-1/2 [1067 X 546]	280 [127]	380 [173]	(6) 20 X 25 [508 X 635]
14	44 [1118]	70 [1778]	16 [406]	6 [152]	58 [1473]	42 X 12 [1067 X 305]	42 X 21-1/2 [1067 X 546]	310 [141]	420 [191]	(3) 20 X 25 (6) 20 X 20 [508 X 635] [508 X 508]
17	44 [1118]	82 [2083]	16 [406]	9 [229]	64 [1626]	42 X 12 [1067 X 305]	42 X 21-1/2 [1067 X 546]	350 [159]	470 [214]	(12) 20 X 20 [508 X 508]

NOTES:

- ALL DIMENSIONS ARE INCHES [MM]
- ALL DIMENSIONS ARE ±1/8" [3]
- METRIC VALUES ARE SOFT CONVERSION
- ALL DRAWINGS SUBJECT TO CHANGE WITHOUT PRIOR NOTICE
- DAMPER LINKAGE IS FACTORY PROVIDED AND INSTALLED
- OPTIONAL DAMPER ACTUATOR WILL BE LOCATED ON THE INSIDE OF MODULE ON THE SAME SIDE AS THE CONTROL ENCLOSURE
- RIGHT HAND UNIT SHOWN
- OPTIONAL HINGED DOOR IS REMOVABLE, BUT MUST BE OPENED 90 DEGREES FOR REMOVAL
- HIGH PRESSURE PORT AND LOW PRESSURE PORT TUBING WILL BE RUN TO THE SAME SIDE OF THE MODULE AS THE MOTOR SHEAVE

Revision Date:	12/14	Form:	AHMS03-MB06	Replaces:	NEW
----------------	-------	-------	-------------	-----------	-----