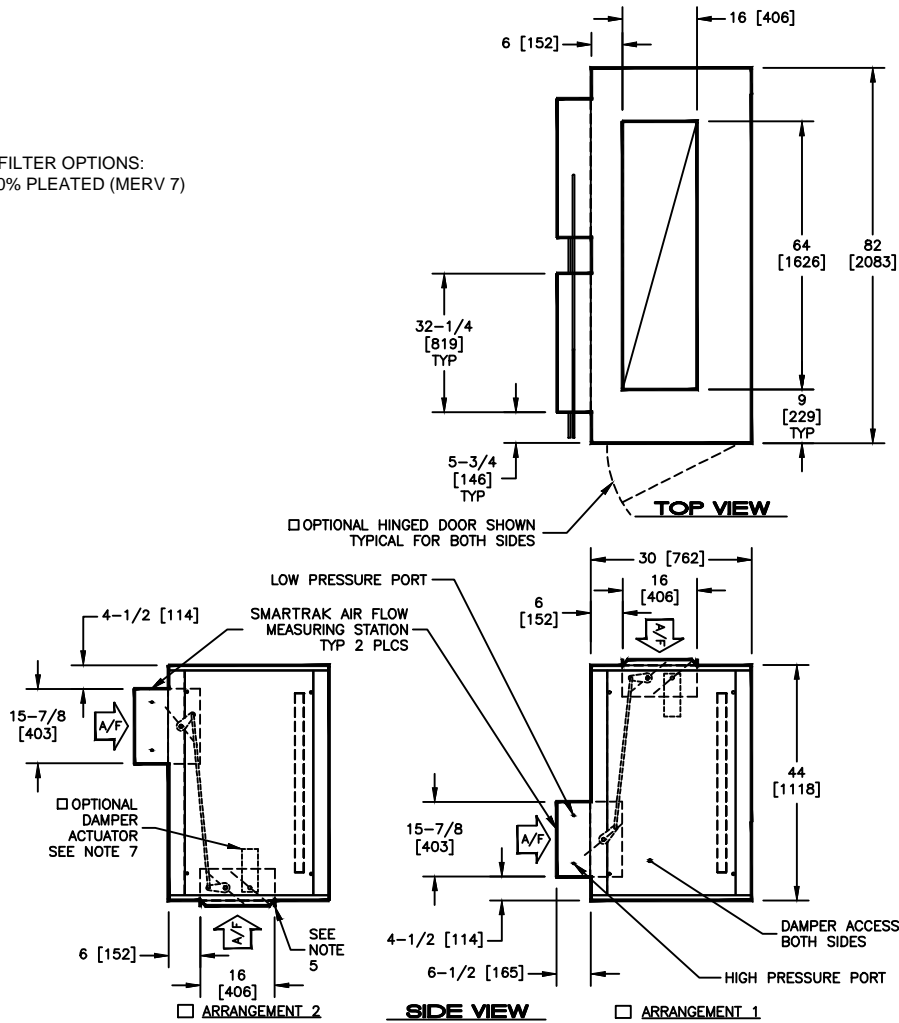


KBM - AIR HANDLER, MODULAR
 MFM - MEDIUM SMARTRAK MIXING BOX WITH FLAT FILTERS, SIZE 17

SUBMITTAL SHEET

 AVAILABLE FILTER OPTIONS:
 2" [51mm], 30% PLEATED (MERV 7)


ACCESS PANEL H X W	WEIGHT		FILTER SIZES
	SINGLE WALL LBS (kg)	DOUBLE WALL LBS (kg)	
42 X 24 [1067 X 610]	325 [147]	380 [172]	(6) 20 X 25 [508 X 635]

NOTES:

- ALL DIMENSIONS ARE INCHES [MM]
- ALL DIMENSIONS ARE ±1/8" [3]
- METRIC VALUES ARE SOFT CONVERSION
- ALL DRAWINGS SUBJECT TO CHANGE WITHOUT PRIOR NOTICE
- DUCT COLLARS ARE 1" [25] ALL AROUND
- DAMPER LINKAGE IS FACTORY PROVIDED AND INSTALLED
- OPTIONAL DAMPER ACTUATOR WILL BE LOCATED ON THE INSIDE OF MODULE ON THE SAME SIDE AS THE CONTROL ENCLOSURE
- RIGHT HAND UNIT SHOWN
- OPTIONAL HINGED DOOR IS REMOVABLE, BUT MUST BE OPENED 90 DEGREES FOR REMOVAL
- HIGH PRESSURE PORT AND LOW PRESSURE PORT TUBING WILL BE RUN TO THE SAME SIDE OF THE MODULE AS THE MOTOR SHEAVE

Revision Date: 11/14	Form: AHMS03-MB05	Replaces: NEW
----------------------	-------------------	---------------