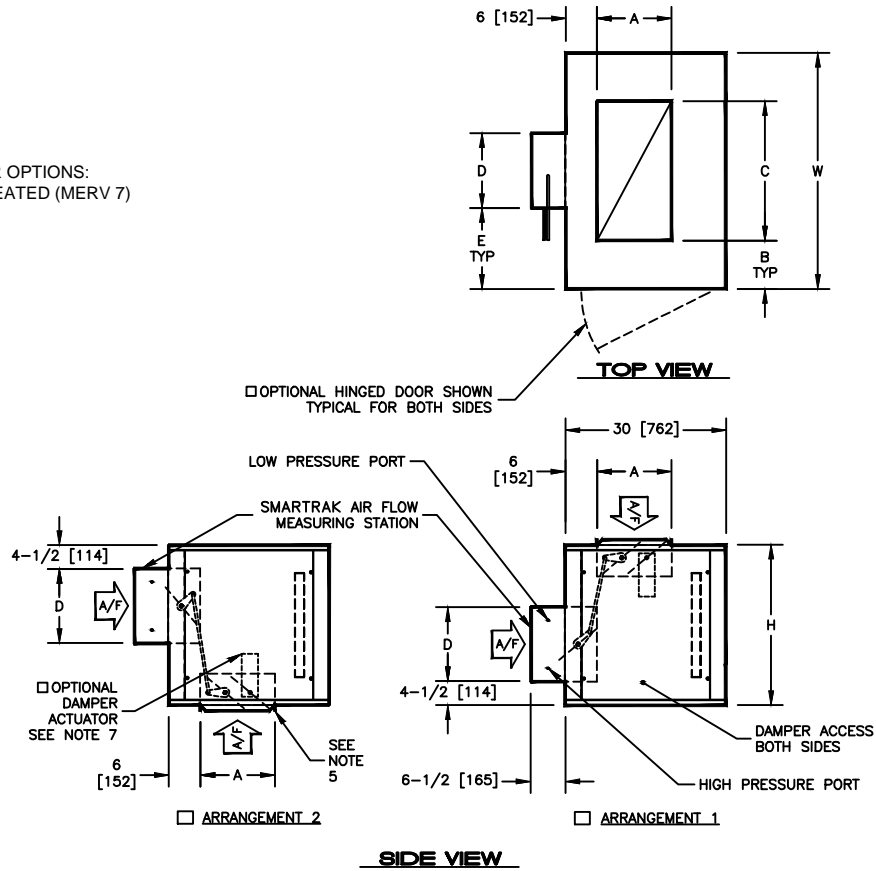


KBM - AIR HANDLER, MODULAR
 MFM - MEDIUM SMARTRAK MIXING BOX WITH FLAT FILTERS, SIZES 02-08

SUBMITTAL SHEET

 AVAILABLE FILTER OPTIONS:
 2" [51mm], 30% PLEATED (MERV 7)


SIZE	H	W	A	B	C	D DIAMETER	E	ACCESS PANEL H X W	WEIGHT		FILTER SIZES
									SINGLE WALL LBS (kg)	DOUBLE WALL LBS (kg)	
02	22	30	10	9	12	9-7/8	10-1/16	20 X 24	110	135	(1) 16 X 20
	[559]	[762]	[254]	[229]	[305]	[251]	[256]	[508 X 610]	[50]	[61]	[406 X 508]
03	22	36	10	9	18	9-7/8	13-1/16	20 X 24	120	150	(1) 16 X 25
	[559]	[914]	[254]	[229]	[457]	[251]	[332]	[508 X 610]	[55]	[68]	[406 X 635]
04	22	44	10	10	24	11-7/8	16-1/16	20 X 24	136	171	(2) 16 X 20
	[559]	[1118]	[254]	[254]	[610]	[302]	[408]	[508 X 610]	[62]	[78]	[406 X 508]
06	30	44	14	9	26	13-7/8	15-1/16	28 X 24	160	200	(2) 20 X 25
	[762]	[1118]	[356]	[229]	[660]	[352]	[383]	[711 X 610]	[73]	[91]	[508 X 635]
08	34	48	14	6	36	15-7/8	16-1/16	32 X 24	185	230	(2) 20 X 25
	[864]	[1219]	[356]	[152]	[914]	[403]	[408]	[813 X 610]	[84]	[104]	[508 X 635]

NOTES:

- ALL DIMENSIONS ARE INCHES [MM]
- ALL DIMENSIONS ARE ±1/8" [3]
- METRIC VALUES ARE SOFT CONVERSION
- ALL DRAWINGS SUBJECT TO CHANGE WITHOUT PRIOR NOTICE
- DUCT COLLARS ARE 1" [25] ALL AROUND
- DAMPER LINKAGE IS FACTORY PROVIDED AND INSTALLED
- OPTIONAL DAMPER ACTUATOR WILL BE LOCATED ON THE INSIDE OF MODULE ON THE SAME SIDE AS THE CONTROL ENCLOSURE
- RIGHT HAND UNIT SHOWN
- OPTIONAL HINGED DOOR IS REMOVABLE, BUT MUST BE OPENED 90 DEGREES FOR REMOVAL
- HIGH PRESSURE PORT AND LOW PRESSURE PORT TUBING WILL BE RUN TO THE SAME SIDE OF THE MODULE AS THE MOTOR SHEAVE

Revision Date: 11/14	Form: AHMS03-MB02	Replaces: NEW
----------------------	-------------------	---------------