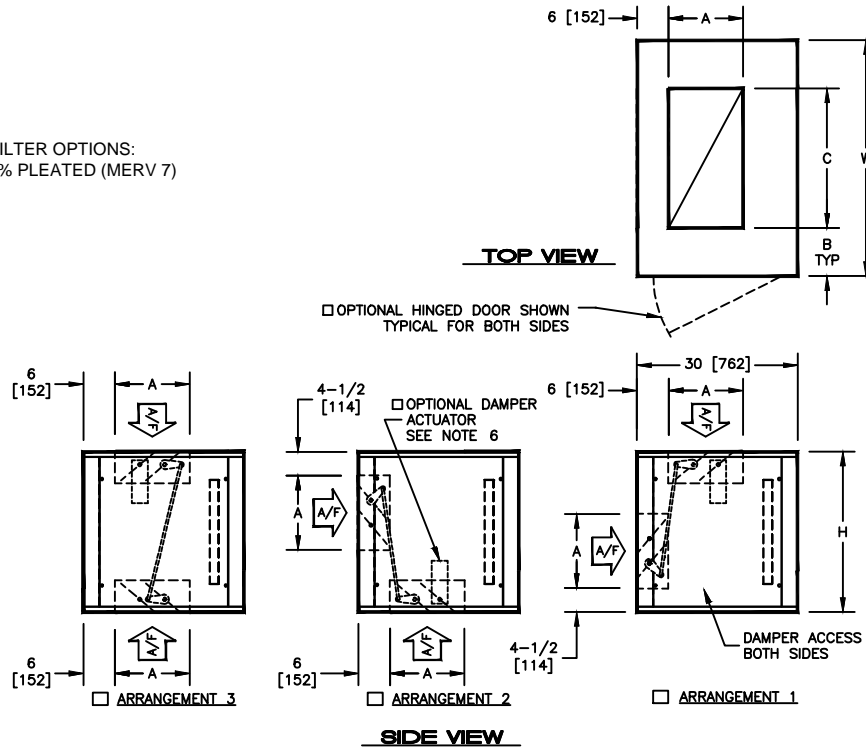


**KBM - AIR HANDLER, MODULAR**  
 MMM - MEDIUM MIXING BOX WITH FLAT FILTERS

**SUBMITTAL SHEET**

 AVAILABLE FILTER OPTIONS:  
 2" [51mm], 30% PLEATED (MERV 7)


SIZE	H	W	A	B	C	ACCESS PANEL H X W	WEIGHT		FILTER SIZES
							SINGLE WALL LBS (kg)	DOUBLE WALL LBS (kg)	
02	22 [559]	30 [762]	10 [254]	9 [229]	12 [305]	20 X 24 [508 X 610]	110 [50]	135 [61]	(1) 16 X 20 [406 X 508]
03	22 [559]	36 [914]	10 [254]	9 [229]	18 [457]	20 X 24 [508 X 610]	120 [55]	150 [68]	(1) 16 X 25 [406 X 635]
04	22 [559]	44 [1118]	10 [254]	10 [254]	24 [610]	20 X 24 [508 X 610]	136 [62]	171 [78]	(2) 16 X 20 [406 X 508]
06	30 [762]	44 [1118]	14 [356]	9 [229]	26 [660]	28 X 24 [711 X 610]	160 [73]	200 [91]	(2) 20 X 25 [508 X 635]
08	34 [864]	48 [1219]	14 [356]	6 [152]	36 [914]	32 X 24 [813 X 610]	185 [84]	230 [104]	(2) 20 X 25 [508 X 635]
10	34 [864]	58 [1473]	14 [356]	7 [178]	44 [1118]	32 X 24 [813 X 610]	210 [95]	260 [118]	(1) 16 X 25 (2) 20 X 25 [406 X 635] [508 X 635]
12	44 [1118]	66 [1676]	16 [406]	10 [254]	46 [1168]	42 X 24 [1067 X 610]	265 [120]	325 [147]	(4) 20 X 25 [508 X 635]
14	44 [1118]	70 [1778]	16 [406]	6 [152]	58 [1473]	42 X 24 [1067 X 610]	285 [129]	345 [156]	(8) 16 X 20 [406 X 508]
17	44 [1118]	82 [2083]	16 [406]	9 [229]	64 [1626]	42 X 24 [1067 X 610]	325 [147]	380 [172]	(6) 20 X 25 [508 X 635]

**NOTES:**

- ALL DIMENSIONS ARE INCHES [MM]
- ALL DIMENSIONS ARE ±1/8" [3]
- METRIC VALUES ARE SOFT CONVERSION
- ALL DRAWINGS SUBJECT TO CHANGE WITHOUT PRIOR NOTICE
- DAMPER LINKAGE IS FACTORY PROVIDED AND INSTALLED
- OPTIONAL DAMPER ACTUATOR WILL BE LOCATED ON THE INSIDE OF MODULE ON THE SAME SIDE AS THE CONTROL ENCLOSURE
- RIGHT HAND UNIT SHOWN
- OPTIONAL HINGED DOOR IS REMOVABLE, BUT MUST BE OPENED 90 DEGREES FOR REMOVAL
- HIGH PRESSURE PORT AND LOW PRESSURE PORT TUBING WILL BE RUN TO THE SAME SIDE OF THE MODULE AS THE MOTOR SHEAVE

Revision Date: 11/14	Form: AHMS03-MB01	Replaces: NEW
----------------------	-------------------	---------------