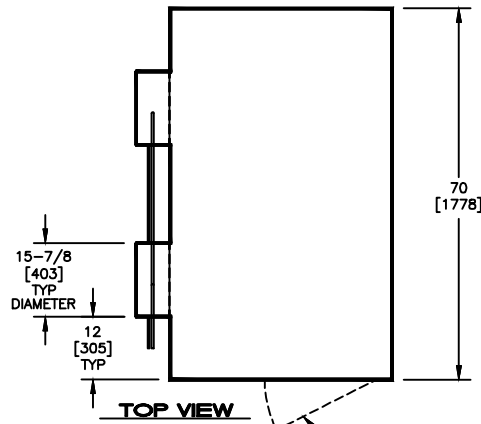
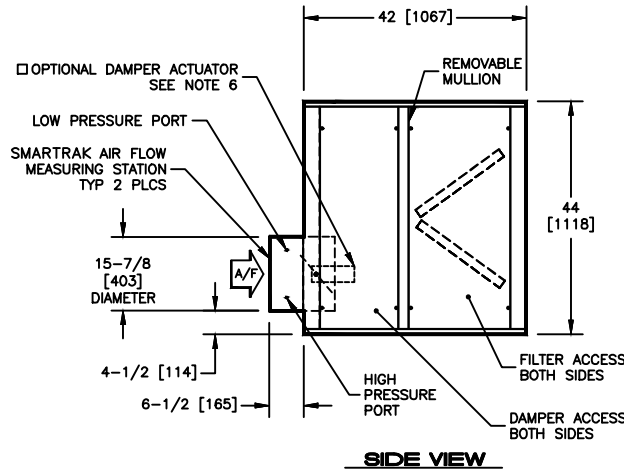


KBM - AIR HANDLER, MODULAR

LIM - LARGE SMARTRAK INLET PLENUM WITH V-BANK FILTERS, SIZE 14

SUBMITTAL SHEET

 AVAILABLE FILTER OPTIONS:
 2" [51mm], 30% PLEATED (MERV 7)

 OPTIONAL HINGED DOOR SHOWN TYPICAL FOR BOTH SIDES


ACCESS PANEL		WEIGHT		FILTER SIZES
DAMPER H X W	FILTER H X W	SINGLE WALL LBS [kg]	DOUBLE WALL LBS [kg]	
42 X 12 [1067 X 305]	42 X 21-1/2 [1067 X 546]	310 [141]	420 [191]	(3) 20 X 25 (6) 20 X 20 [508 X 635] [508 X 508]

NOTES:

- ALL DIMENSIONS ARE INCHES [MM]
- ALL DIMENSIONS ARE $\pm 1/8"$ [3]
- METRIC VALUES ARE SOFT CONVERSION
- ALL DRAWINGS SUBJECT TO CHANGE WITHOUT PRIOR NOTICE
- DAMPER IS FACTORY PROVIDED AND INSTALLED AS STANDARD FEATURE
- OPTIONAL DAMPER ACTUATOR WILL BE LOCATED ON THE INSIDE MODULE ON THE SAME SIDE AS THE MOTOR SHEAVE
- RIGHT HAND UNIT SHOWN
- OPTIONAL HINGED DOOR IS REMOVABLE, BUT MUST BE OPENED 90 DEGREES FOR REMOVAL
- HIGH PRESSURE PORT AND LOW PRESSURE PORT TUBING WILL BE RUN TO THE SAME SIDE OF MODULE AS THE MOTOR SHEAVE

Revision Date: 11/14	Form: AHMS02-PL09	Replaces: NEW
----------------------	-------------------	---------------