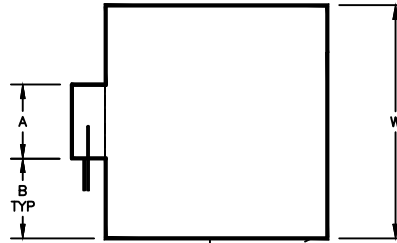


KBM - AIR HANDLER, MODULAR

LIM - LARGE SMARTRAK INLET PLENUM WITH V-BANK FILTERS, SIZES 02-08

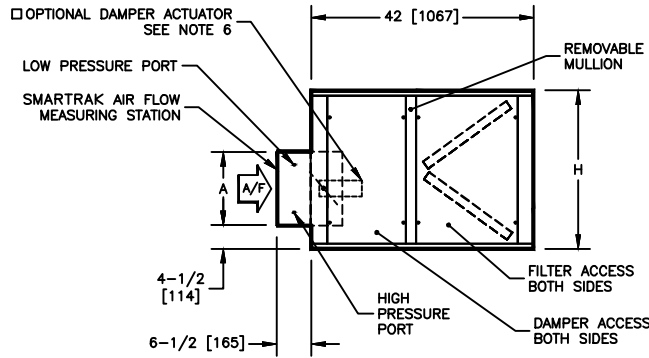
SUBMITTAL SHEET

AVAILABLE FILTER OPTIONS:
 2" [51mm], 30% PLEATED (MERV 7)



OPTIONAL HINGED DOOR SHOWN
 TYPICAL FOR BOTH SIDES

TOP VIEW



SIDE VIEW

SIZE	H	W	A DIAMETER	B	ACCESS PANEL		WEIGHT		FILTER SIZES
					DAMPER H X W	FILTER H X W	SINGLE WALL LBS [kg]	DOUBLE WALL LBS [kg]	
02	22	30	9-7/8	10-1/16	20 X 12	20 X 21-1/2	130	170	(2) 16 X 20
	[559]	[762]	[251]	[256]	[508 X 305]	[508 X 546]	[59]	[77]	[406 X 508]
03	22	36	9-7/8	13-1/16	20 X 12	20 X 21-1/2	145	190	(2) 16 X 25
	[559]	[914]	[251]	[332]	[508 X 305]	[508 X 546]	[66]	[86]	[406 X 635]
04	22	44	11-7/8	16-1/16	20 X 12	20 X 21-1/2	160	220	(2) 20 X 25
	[559]	[1118]	[302]	[408]	[508 X 305]	[508 X 546]	[73]	[100]	[508 X 635]
06	30	44	13-7/8	15-1/16	28 X 12	28 X 21-1/2	210	250	(4) 20 X 20
	[762]	[1118]	[352]	[383]	[711 X 305]	[711 X 546]	[95]	[114]	[508 X 508]
08	34	48	15-7/8	16-1/16	32 X 12	32 X 21-1/2	220	280	(2) 16 X 20 (2) 20 X 25
	[864]	[1219]	[403]	[408]	[813 X 305]	[813 X 546]	[100]	[127]	[406 X 508] [508 X 635]

NOTES:

1. ALL DIMENSIONS ARE INCHES [MM]
2. ALL DIMENSIONS ARE ±1/8" [3]
3. METRIC VALUES ARE SOFT CONVERSION
4. ALL DRAWINGS SUBJECT TO CHANGE WITHOUT PRIOR NOTICE
5. DAMPER IS FACTORY PROVIDED AND INSTALLED AS STANDARD FEATURE
6. OPTIONAL DAMPER ACTUATOR WILL BE LOCATED ON THE INSIDE MODULE ON THE SAME SIDE AS THE MOTOR SHEAVE
7. RIGHT HAND UNIT SHOWN
8. OPTIONAL HINGED DOOR IS REMOVABLE, BUT MUST BE OPENED 90 DEGREES FOR REMOVAL
9. HIGH PRESSURE PORT AND LOW PRESSURE PORT TUBING WILL BE RUN TO THE SAME SIDE OF MODULE AS THE MOTOR SHEAVE

Revision Date: 11/14	Form: AHMS02-PL07	Replaces: NEW
----------------------	-------------------	---------------