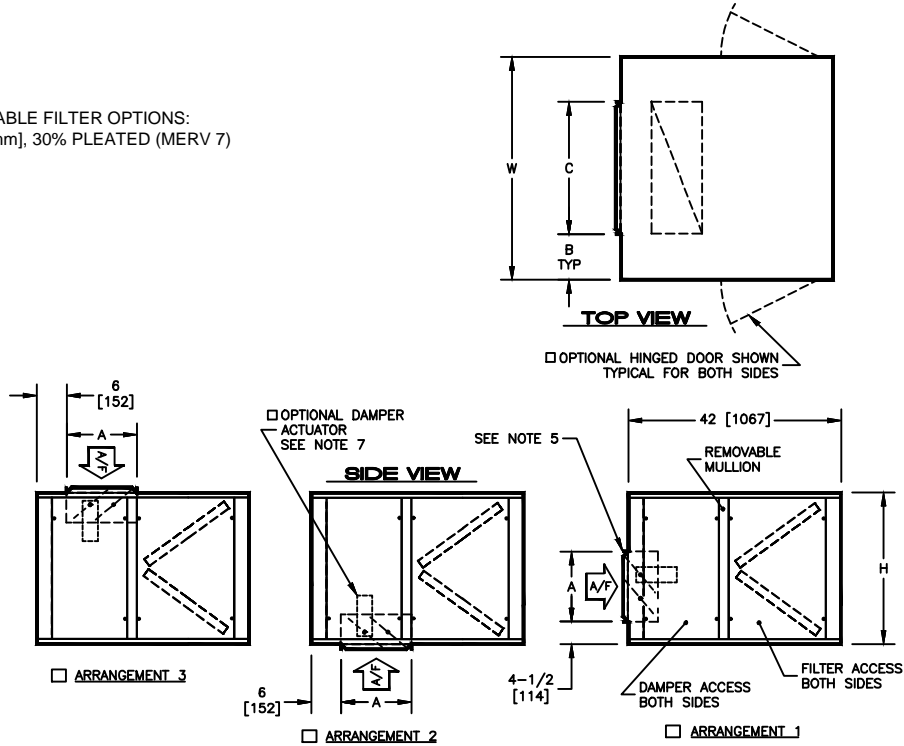


KBM - AIR HANDLER, MODULAR
 LRM - LARGE INLET PLENUM WITH V-BANK FILTERS

SUBMITTAL SHEET

 AVAILABLE FILTER OPTIONS:
 2" [51mm], 30% PLEATED (MERV 7)


SIZE	H	W	A	B	C	ACCESS PANEL		WEIGHT		FILTER SIZES
						DAMPER H X W	FILTER H X W	SINGLE WALL LBS [kg]	DOUBLE WALL LBS [kg]	
02	22 [559]	30 [762]	10 [254]	9 [229]	12 [305]	20 X 12 [508 X 305]	20 X 21-1/2 [508 X 546]	129 [59]	169 [77]	(2) 16 X 20 [406 X 508]
03	22 [559]	36 [914]	10 [254]	9 [229]	18 [457]	20 X 12 [508 X 305]	20 X 21-1/2 [508 X 546]	144 [65]	189 [86]	(2) 16 X 25 [406 X 635]
04	22 [559]	44 [1118]	10 [254]	10 [254]	24 [610]	20 X 12 [508 X 305]	20 X 21-1/2 [508 X 546]	159 [72]	219 [99]	(2) 20 X 25 [508 X 635]
06	30 [762]	44 [1118]	14 [356]	9 [229]	26 [660]	28 X 12 [711 X 305]	28 X 21-1/2 [711 X 546]	208 [94]	248 [112]	(4) 20 X 20 [508 X 508]
08	34 [864]	48 [1219]	14 [356]	6 [152]	36 [914]	32 X 12 [813 X 305]	32 X 21-1/2 [813 X 546]	218 [99]	278 [126]	(2) 16 X 20 (2) 20 X 25 [406 X 508] [508 X 635]
10	34 [864]	58 [1473]	14 [356]	7 [178]	44 [1118]	32 X 12 [813 X 305]	32 X 21-1/2 [813 X 546]	233 [106]	313 [142]	(2) 16 X 20 (4) 20 X 20 [406 X 508] [508 X 508]
12	44 [1118]	66 [1676]	16 [406]	10 [254]	46 [1168]	42 X 12 [1067 X 305]	42 X 21-1/2 [1067 X 546]	277 [126]	377 [171]	(6) 20 X 25 [508 X 635]
14	44 [1118]	70 [1778]	16 [406]	6 [152]	58 [1473]	42 X 12 [1067 X 305]	42 X 21-1/2 [1067 X 546]	308 [140]	417 [189]	(3) 20 X 25 (6) 20 X 20 [508 X 635] [508 X 508]
17	44 [1118]	82 [2083]	16 [406]	9 [229]	64 [1626]	42 X 12 [1067 X 305]	42 X 21-1/2 [1067 X 546]	347 [157]	467 [212]	(12) 20 X 20 [508 X 508]

NOTES:

- ALL DIMENSIONS ARE INCHES [MM]
- ALL DIMENSIONS ARE ±1/8" [3]
- METRIC VALUES ARE SOFT CONVERSION
- ALL DRAWINGS SUBJECT TO CHANGE WITHOUT PRIOR NOTICE
- DUCT COLLAR ARE 1" [25] ALL AROUND
- DAMPER IS FACTORY PROVIDED AND INSTALLED AS AN OPTION
- OPTIONAL DAMPER ACTUATOR WILL BE LOCATED ON THE INSIDE OF MODULE ON THE SAME SIDE AS THE CONTROL ENCLOSURE
- OPTIONAL HINGED DOOR IS REMOVABLE, BUT MUST BE OPENED 90 DEGREES FOR REMOVAL

Revision Date: 12/14	Form: AHMS02-PL06	Replaces: NEW
----------------------	-------------------	---------------