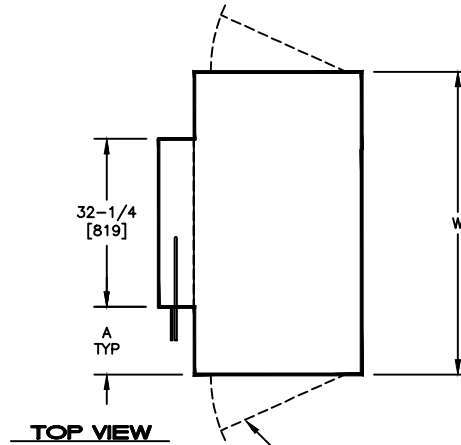
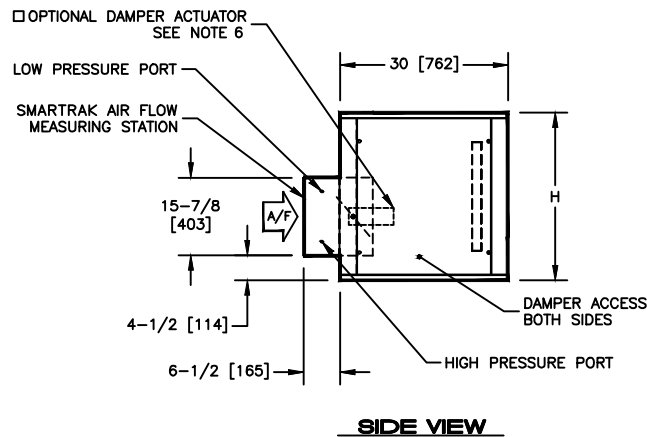


KBM - AIR HANDLER, MODULAR

MIM - MEDIUM SMARTRAK INLET PLENUM WITH FLAT FILTERS, SIZES 10-12

SUBMITTAL SHEET

 AVAILABLE FILTER OPTIONS:
 2" [51mm], 30% PLEATED (MERV 7)

 OPTIONAL HINGED DOOR SHOWN
 TYPICAL FOR BOTH SIDES


SIZE	H	W	A	ACCESS PANEL H X W	WEIGHT		FILTER SIZES
					SINGLE WALL LBS (kg)	DOUBLE WALL LBS (kg)	
10	34 [864]	58 [1473]	12-7/8 [327]	32 X 24 [813 X 610]	220 [95]	260 [118]	(1) 16 X 25 (2) 20 X 25 [406 X 635] [508 X 635]
12	44 [1118]	66 [1676]	16-7/8 [429]	42 X 24 [1067 X 610]	265 [120]	325 [147]	(4) 20 X 25 [508 X 635]

NOTES:

- ALL DIMENSIONS ARE INCHES [MM]
- ALL DIMENSIONS ARE ±1/8" [3]
- METRIC VALUES ARE SOFT CONVERSION
- ALL DRAWINGS SUBJECT TO CHANGE WITHOUT PRIOR NOTICE
- DAMPER IS FACTORY PROVIDED AND INSTALLED AS STANDARD FEATURE
- OPTIONAL DAMPER ACTUATOR WILL BE LOCATED ON THE INSIDE MODULE ON THE SAME SIDE AS THE MOTOR SHEAVE
- RIGHT HAND UNIT SHOWN
- OPTIONAL HINGED DOOR IS REMOVABLE, BUT MUST BE OPENED 90 DEGREES FOR REMOVAL
- HIGH PRESSURE PORT AND LOW PRESSURE PORT TUBING WILL BE RUN TO THE SAME SIDE OF MODULE AS THE MOTOR SHEAVE

Revision Date: 11/14

Form: AHMS02-PL03

Replaces: NEW