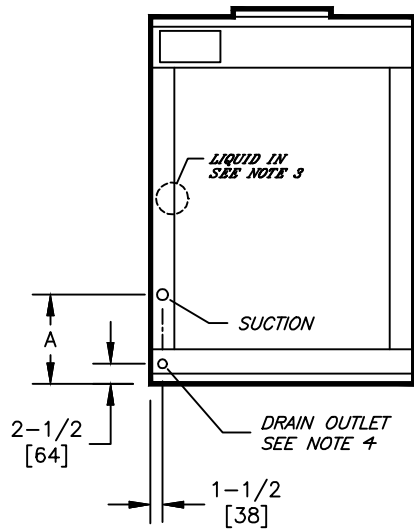
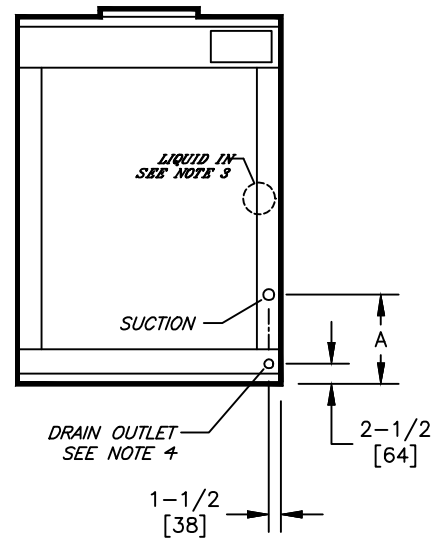


FIG. 4
4-6 ROW R22 EVAPORATOR COOLING

LEFT HAND UNIT

RIGHT HAND UNIT

INTERNAL EVAPORATOR COILS				
SIZE	4 ROWS		6 ROWS	
	SUCTION SIZE	A	SUCTION SIZE	A
08	5/8 [16]	5-1/8 [130]	5/8 [16]	5-1/8 [130]
12	7/8 [23]		7/8 [23]	
16				
20				
25				
30	1-1/8 [29]		1-1/8 [29]	

NOTES:

1. ALL DIMENSIONS ARE INCHES [MM]
2. ALL DIMENSIONS ARE $\pm 1/2"$ [13]
3. METRIC VALUES ARE SOFT CONVERSION
4. STANDARD GALVANIZED DRAIN PAN HAS 1-18" ODM COPPER CONNECTION; OPTIONAL STEEL DRAIN PAN HAS 1" GALVANIZED SCH. 40 THREADED STEEL CONNECTION
5. CONNECTION AT REFRIGERANT DISTRIBUTOR IS INTERNAL TO ALLOW PROPER INSTALLATION OF EXPANSION VALVE
6. ALL COILS ARE SINGLE REFRIGERANT CIRCUIT ONLY
7. DIMENSIONS ARE BASED ON UNIT CABINET ONLY, AND DO NOT INCLUDES FILTER RACK OR BASE RAIL

Revision Date: 12/14

Form: BCS20-SWC06

Replaces: NEW