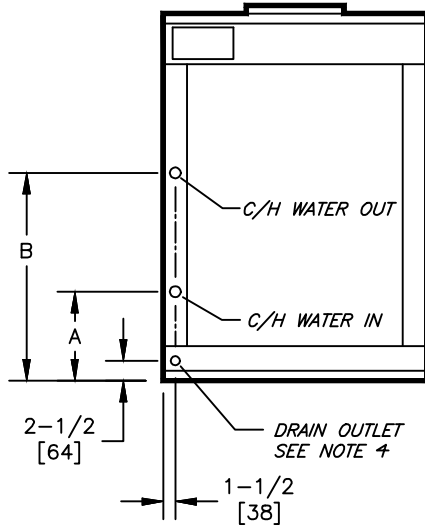


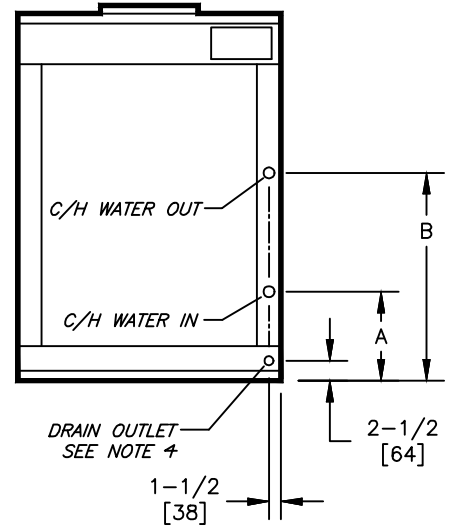
KSB, KSL - VERTICAL DOWNSIZED BLOWER COIL
 COIL CONNECTION LOCATION - 2 PIPE INTERNAL WATER COIL

SUBMITTAL SHEET

FIG. 1
1, 2, 4, AND 6 ROW (2-PIPE)



LEFT HAND UNIT



RIGHT HAND UNIT

INTERNAL COIL												
SIZE	1 ROW			2 ROW			4 ROW			6 ROW		
	COIL CONNECTION	A	B	COIL CONNECTION	A	B	COIL CONNECTION	A	B	COIL CONNECTION	A	B
08	5/8 [16]	8-1/4 [210]	21-1/2 [546]	5/8 [16]	8-1/4 [210]	21-15/16 [557]	7/8 [23]	7-1/4 [184]	21-3/4 [552]	7/8 [23]	8-1/4 [210]	21-3/4 [552]
12			25-7/8 [657]			26-1/4 [667]			26-1/4 [667]			28-3/8 [721]
16			28 [711]			28-7/16 [718]			28-1/4 [716]			28-3/8 [721]
20			34-1/2 [711]			34-7/8 [886]			33-5/8 [854]			34-11/16 [881]
25			30-3/16 [767]			30-5/8 [778]			30-1/2 [775]			31 [787]
30			34-1/2 [711]			34-7/8 [886]			34-7/8 [886]			34-3/8 [873]

NOTES:

- ALL DIMENSIONS ARE INCHES [MM]
- ALL DIMENSIONS ARE ±1/2" [13]
- METRIC VALUES ARE SOFT CONVERSION
- STANDARD GALVANIZED DRAIN PAN HAS 1-18" ODM COPPER CONNECTION; OPTIONAL STEEL DRAIN PAN HAS 1" GALVANIZED SCH. 40 THREADED STEEL CONNECTION
- 4-PIPE UNITS WITH INTERNAL COILS HAVE COOLING AND HEATING CONNECTIONS ON OPPOSITE SIDES OF UNIT
- ALL INTERNAL HEATING COILS ARE IN THE RE-HEAT POSITION
- DIMENSIONS ARE BASED ON UNIT CABINET ONLY, AND DO NOT INCLUDES FILTER RACK OR BASE RAIL

Revision Date: 12/14	Form: BCS20-SWC01	Replaces: NEW
----------------------	-------------------	---------------