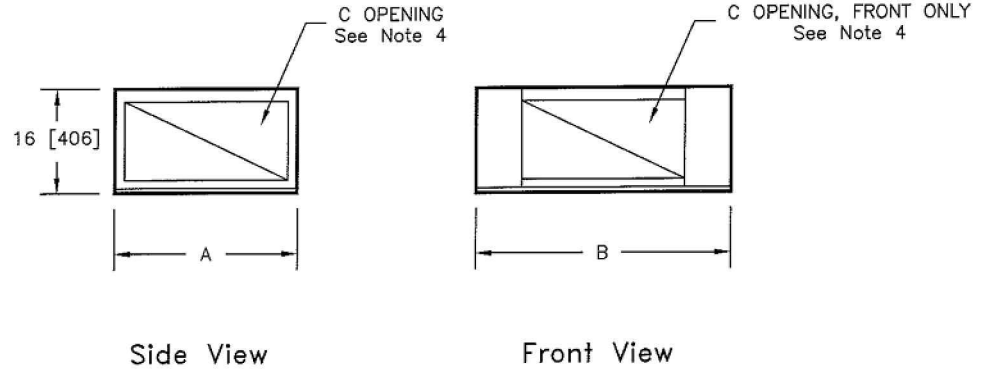


**KSB, KSL - VERTICAL DOWNSIZED BLOWER COIL  
 RETURN PLENUM**
**SUBMITTAL SHEET**


SIZE	A	B	C OPENING
08	19 [483]	26 [660]	9 X 16 [229 X 406]
12	21 [533]	26 [660]	9 X 18 [229 X 457]
16	25 [635]	29 [737]	9 X 22 [229 X 559]
20	28 [711]	29 [737]	12 X 22 [305 X 559]
25	28 [711]	39 [991]	12 X 25 [305 X 635]
30	28 [711]	39 [991]	12 X 25 [305 X 635]

**NOTES:**

1. ALL DIMENSIONS ARE INCHES [MM]
2. ALL DIMENSIONS ARE  $\pm 1/4"$  [6]
3. METRIC VALUES ARE SOFT CONVERSION
4. STANDARD PLENUM IS PROVIDED WITH REMOVABLE COVERS ON SIDE OPENINGS, AND PLENUM IS INSTALLED ON UNIT FOR FRONT INLET; COVERS MAY BE RELOCATED, AND PLENUM MAY BE ROTATED IN THE FIELD FOR ALTERNATE INLET LOCATIONS

Revision Date: 12/14	Form: BCS19-SPL02	Replaces: NEW
----------------------	-------------------	---------------