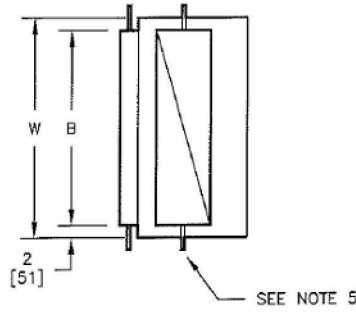
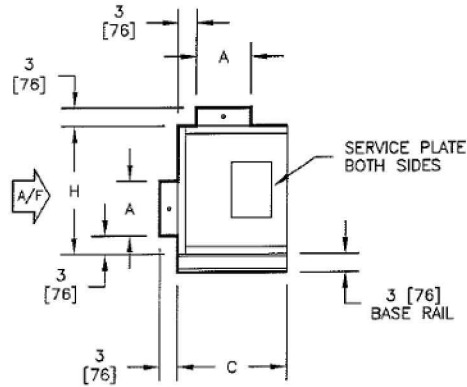


KSB, KSL - VERTICAL DOWNSIZED BLOWER COIL
 STANDARD MIXING BOX

SUBMITTAL SHEET

TOP VIEWS

SIDE VIEWS

SIZE	H	W	A	B	C
08	19 [483]	26 [660]	6 [152]	22 [559]	12 [305]
12	21 [533]	26 [660]	9 [229]	22 [559]	15 [381]
16	25 [635]	29 [737]	9 [229]	25 [635]	15 [381]
20	28 [711]	29 [737]	12 [305]	25 [635]	18 [457]
25	28 [711]	39 [991]	12 [305]	35 [889]	18 [457]
30	28 [711]	39 [991]	12 [305]	35 [889]	18 [457]

NOTES:

- ALL DIMENSIONS ARE INCHES [MM]
- ALL DIMENSIONS ARE $\pm 1/4"$ [6]
- METRIC VALUES ARE SOFT CONVERSION
- DAMPER BLADE-TO-BLADE LINKAGE MAY EXTEND INTO INLET DUCTS
- DAMPER DRIVE RODS ARE EXTERNAL, LOCATED ON BOTH SIDES OF UNIT
- MIXING BOX IS LOCATED AT INLET TO STANDARD FILTER RACK
- BASE RAIL SHOWN IS REQUIRED ON UNITS WITH MIXING BOX OPTION; SEE SUBMITTAL BCS09-BR01 FOR BASE RAIL DETAILS
- PARALLEL BLADE OPERATION IS STANDARD; UNIT SIZES 08 THROUGH 16 HAVE SINGLE BLADE DAMPERS

Revision Date: 12/14

Form: BCS17-SMB01

Replaces: NEW