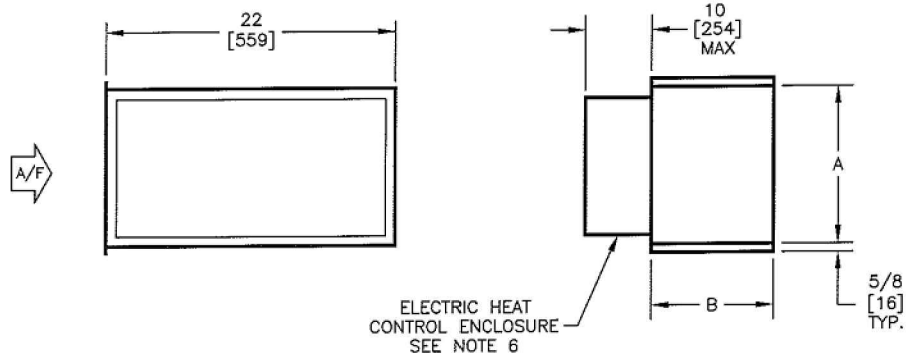


KSB, KSL - VERTICAL DOWNSIZED BLOWER COIL
 BLOW-THRU ELECTRIC HEAT

SUBMITTAL SHEET



SIZE	A	B	WEIGHT LBS [kg]
08	11-7/8 [302]	8-7/8 [225]	42 [19]
12	11-7/8 [302]	8-7/8 [225]	42 [19]
16	12 [305]	10-7/8 [276]	42 [19]
20	12 [305]	13-7/8 [352]	50 [23]
25	16-5/8 [422]	13-7/8 [352]	55 [25]
30	16-5/8 [422]	15-5/8 [397]	55 [25]

NOTES:

1. ALL DIMENSIONS ARE INCHES [MM]
2. ALL DIMENSIONS ARE ±1/4" [6]
3. METRIC VALUES ARE SOFT CONVERSION
4. MOTOR/DRIVE LOCATION MAY BE SPECIFIED LEFT OR RIGHT HAND
5. STANDARD CONTROL ENCLOSURE POSITION MATCHES MOTOR/DRIVE POSITION
6. PROVIDE SUFFICIENT CLEARANCE TO PERMIT ACCESS TO CONTROLS AND COMPLY WITH APPLICABLE CODES AND ORDINANCES

Revision Date: 12/14	Form: BCS16-SEH01	Replaces: NEW
----------------------	-------------------	---------------