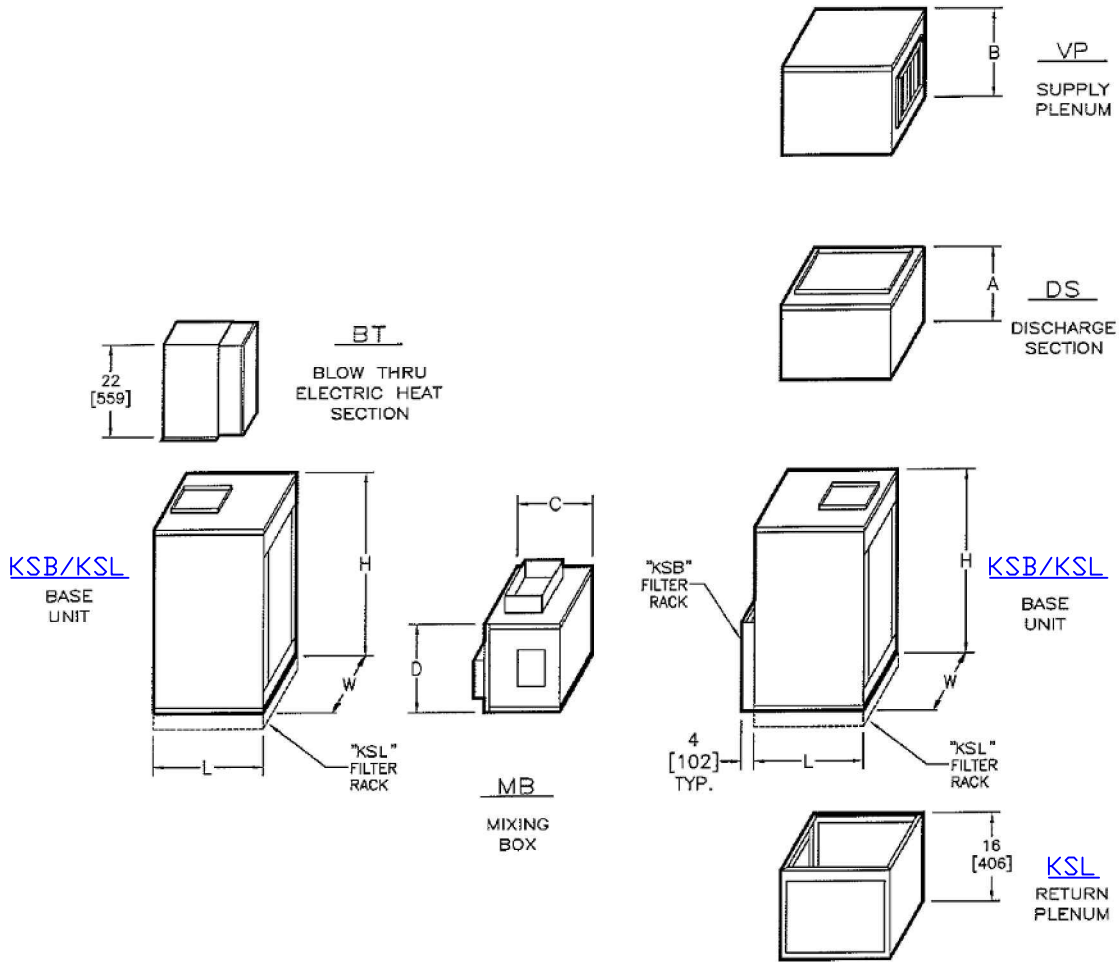


KSB, KSL - VERTICAL DOWNSIZED BLOWER COIL
 UNIT CONFIGURATION

SUBMITTAL SHEET


SIZE	H	W	L	A	B	C	D
08	46 [1168]	26 [660]	19 [483]	12 [305]	12 [305]	12 [305]	19 [483]
12	46 [1168]	26 [660]	21 [533]	12 [305]	12 [305]	15 [381]	21 [533]
16	54 [1372]	29 [737]	25 [635]	14 [356]	14 [356]	15 [381]	25 [635]
20	54 [1372]	29 [737]	28 [711]	14 [356]	16 [406]	18 [457]	28 [711]
25	60 [1524]	39 [991]	28 [711]	18 [457]	16 [406]	18 [457]	28 [711]
30	60 [1524]	39 [991]	28 [711]	18 [457]	16 [406]	18 [457]	28 [711]

NOTES:

- ALL DIMENSIONS ARE INCHES [MM]
- ALL DIMENSIONS ARE ±1/4" [6]
- METRIC VALUES ARE SOFT CONVERSION
- THIS DRAWING IS FOR IDENTIFICATION OF UNIT CONFIGURATION ONLY; SEE INDIVIDUAL UNIT AND SECTION DRAWINGS FOR SUBMITTAL DETAILS
- BLOW-THRU ELECTRIC HEAT MAY NOT BE COMBINED WITH SUPPLY PLENUM OR DISCHARGE SECTION OPTIONS
- MIXING BOX AVAILABLE FOR "KSB" UNIT ONLY, AND ATTACHES TO FILTER FRAME AND MUST INCLUDE BASE RAIL OPTION
- DIRECT DRIVE ACBD AND ACRD OPTION LIMITED TO SIZES 08 THROUGH 20

Revision Date: 12/14	Form: BCS15-SFT01	Replaces: NEW
----------------------	-------------------	---------------