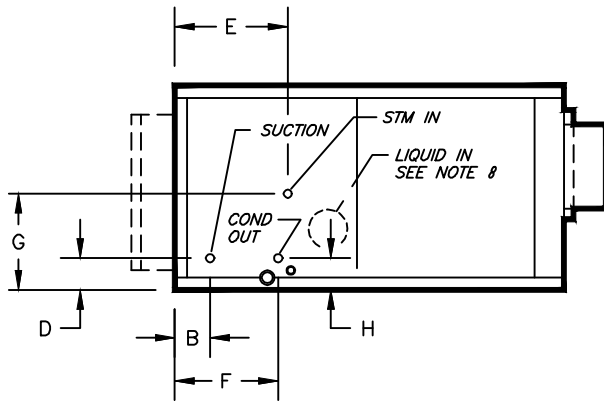
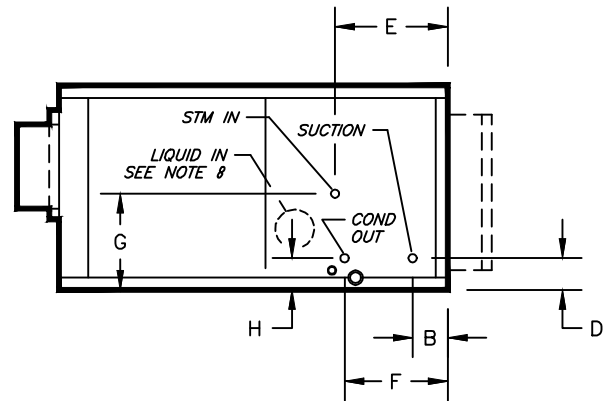
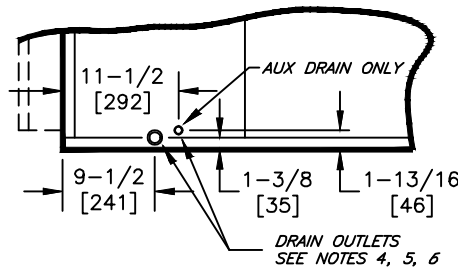


KBH, KBV - HORIZONTAL & VERTICAL BLOWER COIL
 COIL CONNECTION LOCATION - 2 ROW STEAM COIL IN RE-HEAT WITH 3 ROW DX COIL IN COOLING

SUBMITTAL SHEET

RIGHT HAND

LEFT HAND

TYPICAL DRAIN LOCATIONS

RE-HEAT WITH 3 ROW COOLING							
SIZE	STEAM CONNECTION	CONDENSATE CONNECTION	E	F	G	H	
08	1-1/8 [29]	7/8 [23]	12 [305]	9 [229]	10-1/4 [261]	2-3/4 [70]	
12							
16	1-3/8 [35]	1-1/8 [29]	12-1/8 [308]			11-1/2 [293]	2-7/8 [74]
20							
30	1-5/8 [42]					8-7/8 [225]	
40	2-1/8 [54]	1-3/8 [35]	12-1/4 [311]	8-3/4 [222]	14 [356]	3 [77]	

NOTES:

- ALL DIMENSIONS ARE INCHES [MM]
- ALL DIMENSIONS ARE $\pm 1/2"$ [13]
- METRIC VALUES ARE SOFT CONVERSION
- STANDARD GALVANIZED IAQ DRAIN PAN HAS 1-1/8" ODM COPPER CONNECTION ON ONE SIDE. STAINLESS STEEL IAQ DRAIN PAN HAS 1" GALVANIZED SCH. 40 THREADED STEEL CONNECTION ON ONE SIDE ONLY. OPTIONAL AUX CONNECTION IS 3/8" GALVANIZED SCH. 40 THREADED STEEL ON SAME SIDE AS COIL HAND.
- OPTIONAL FLAT GALVANIZED DRAIN PAN HAS 1-1/8" ODM COPPER CONNECTION. OPTIONAL AUX CONNECTION IS 5/8" ODM COPPER. STANDARD AND AUX CONNECTIONS ARE ON BOTH SIDES. CAP UNUSED CONNECTIONS.
- HEATING-ONLY UNITS MAY NOT INCLUDE A DRAIN PAN UNDER HEATING COIL. SEE ACTUAL ORDER DOCUMENTS.
- HORIZONTAL UNIT SHOWN. COIL CONNECTION LOCATIONS ARE TYPICAL FOR VERTICAL UNITS RELATIVE TO LOWER BOTTOM CORNER AT ENTERING AIR SIDE
- CONNECTION AT REFRIGERANT DISTRIBUTOR IS INTERNAL TO ALLOW PROPER INSTALLATION OF EXPANSION VALVE
- ALL CONNECTIONS ARE ODM COPPER SWEAT UNLESS OTHER NOTED
- FIELD PIPING SHOULD BE BASED ON JOB REQUIREMENTS, NOT UNIT CONNECTION SIZE

Revision Date: 12/14

Form: BCS11-WC54

Replaces: NEW