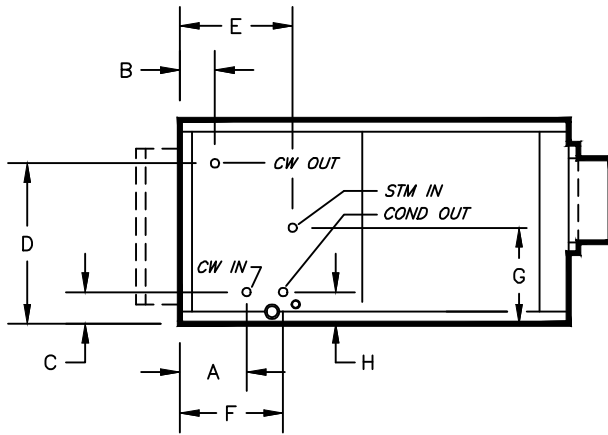


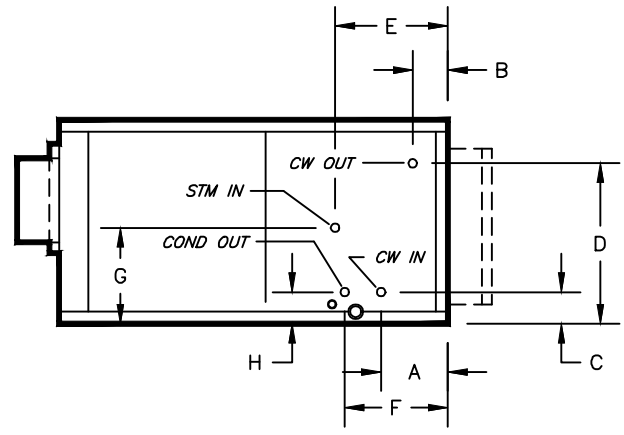
KBH, KBV - HORIZONTAL & VERTICAL BLOWER COIL

COIL CONNECTION LOCATION - 1 ROW STEAM COIL IN RE-HEAT WITH 3 ROW WATER COIL IN COOLING

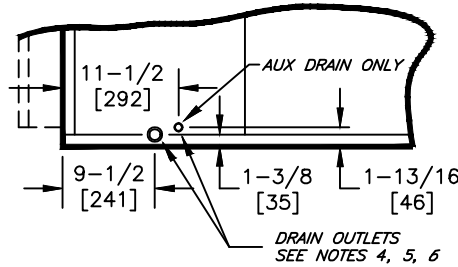
SUBMITTAL SHEET



RIGHT HAND



LEFT HAND



TYPICAL DRAIN LOCATIONS

RE-HEAT WITH 3 ROW COOLING						
SIZE	STEAM CONNECTION	CONDENSATE CONNECTION	E	F	G	H
08	1-1/8 [29]	7/8 [23]	11-3/8 [289]	9-5/8 [244]	10-7/8 [277]	3-1/2 [89]
12						
16						
20	1-3/8 [35]	1-1/8 [29]	11-1/2 [292]	9-1/2 [241]	12-1/8 [308]	3-5/8 [92]
30	1-5/8 [42]		11-5/8 [295]	9-3/8 [238]	13-3/8 [340]	
40	2-1/8 [54]	1-3/8 [35]	11-3/4 [298]	9-1/4 [235]	14-5/8 [372]	3-3/4 [96]

NOTES:

- ALL DIMENSIONS ARE INCHES [MM]
- ALL DIMENSIONS ARE $\pm 1/2"$ [13]
- METRIC VALUES ARE SOFT CONVERSION
- STANDARD GALVANIZED IAQ DRAIN PAN HAS 1-1/8" ODM COPPER CONNECTION ON ONE SIDE. STAINLESS STEEL IAQ DRAIN PAN HAS 1" GALVANIZED SCH. 40 THREADED STEEL CONNECTION ON ONE SIDE ONLY. OPTIONAL AUX CONNECTION IS 3/8" GALVANIZED SCH. 40 THREADED STEEL ON SAME SIDE AS COIL HAND.
- OPTIONAL FLAT GALVANIZED DRAIN PAN HAS 1-1/8" ODM COPPER CONNECTION. OPTIONAL AUX CONNECTION IS 5/8" ODM COPPER. STANDARD AND AUX CONNECTIONS ARE ON BOTH SIDES. CAP UNUSED CONNECTIONS.
- HEATING-ONLY UNITS MAY NOT INCLUDE A DRAIN PAN UNDER HEATING COIL. SEE ACTUAL ORDER DOCUMENTS.
- HORIZONTAL UNIT SHOWN. COIL CONNECTION LOCATIONS ARE TYPICAL FOR VERTICAL UNITS RELATIVE TO LOWER BOTTOM CORNER AT ENTERING AIR SIDE
- ALL CONNECTIONS ARE ODM COPPER SWEAT UNLESS OTHER NOTED
- FIELD PIPING SHOULD BE BASED ON JOB REQUIREMENTS, NOT UNIT CONNECTION SIZE

Revision Date: 12/14

Form: BCS11-WC48

Replaces: NEW