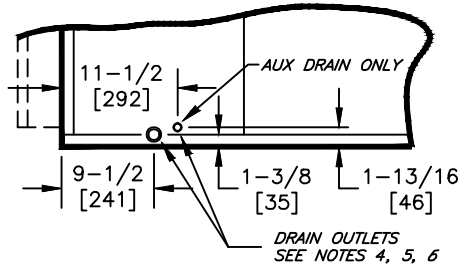
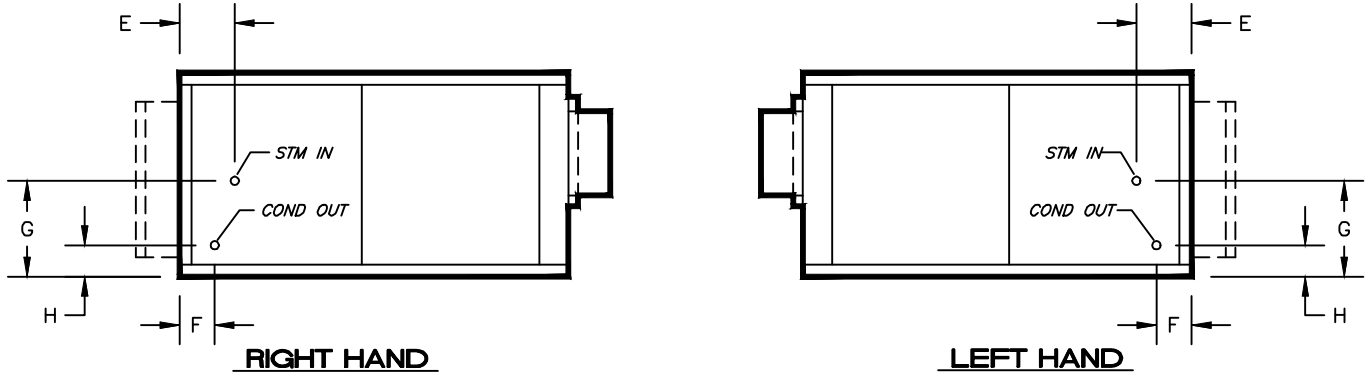


KBH, KBV - HORIZONTAL & VERTICAL BLOWER COIL
 COIL CONNECTION LOCATION - 2 ROW STEAM COIL, HEATING ONLY

SUBMITTAL SHEET

TYPICAL DRAIN LOCATIONS

HEATING ONLY AND PRE-HEAT								
SIZE	STEAM CONNECTION	CONDENSATE CONNECTION	E	F	G	H		
08	1-1/8	7/8	6-3/4	3-3/4	10-1/4	2-3/4		
12	[29]	[23]	[172]					
16	1-3/8	1-1/8	6-7/8	[96]	11-1/2	2-7/8		
20	[35]						[29]	[293]
30	1-5/8						[42]	[92]
40	2-1/8	1-3/8	7	3-1/2	14	3		
	[54]	[35]	[178]	[89]	[356]	[77]		

NOTES:

- ALL DIMENSIONS ARE INCHES [MM]
- ALL DIMENSIONS ARE ±1/2" [13]
- METRIC VALUES ARE SOFT CONVERSION
- STANDARD GALVANIZED IAQ DRAIN PAN HAS 1-1/8" ODM COPPER CONNECTION ON ONE SIDE. STAINLESS STEEL IAQ DRAIN PAN HAS 1" GALVANIZED SCH. 40 THREADED STEEL CONNECTION ON ONE SIDE ONLY. OPTIONAL AUX CONNECTION IS 3/8" GALVANIZED SCH. 40 THREADED STEEL ON SAME SIDE AS COIL HAND.
- OPTIONAL FLAT GALVANIZED DRAIN PAN HAS 1-1/8" ODM COPPER CONNECTION. OPTIONAL AUX CONNECTION IS 5/8" ODM COPPER. STANDARD AND AUX CONNECTIONS ARE ON BOTH SIDES. CAP UNUSED CONNECTIONS.
- HEATING-ONLY UNITS MAY NOT INCLUDE A DRAIN PAN UNDER HEATING COIL. SEE ACTUAL ORDER DOCUMENTS.
- HORIZONTAL UNIT SHOWN. COIL CONNECTION LOCATIONS ARE TYPICAL FOR VERTICAL UNITS RELATIVE TO LOWER BOTTOM CORNER AT ENTERING AIR SIDE
- ALL CONNECTIONS ARE ODM COPPER SWEAT UNLESS OTHER NOTED
- FIELD PIPING SHOULD BE BASED ON JOB REQUIREMENTS, NOT UNIT CONNECTION SIZE

Revision Date: 12/14	Form: BCS11-WC47	Replaces: NEW
----------------------	------------------	---------------