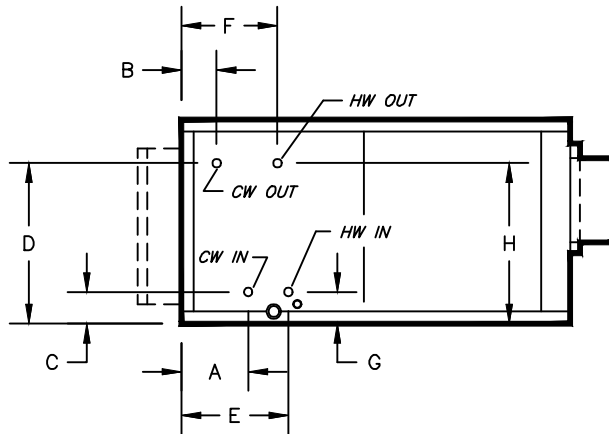


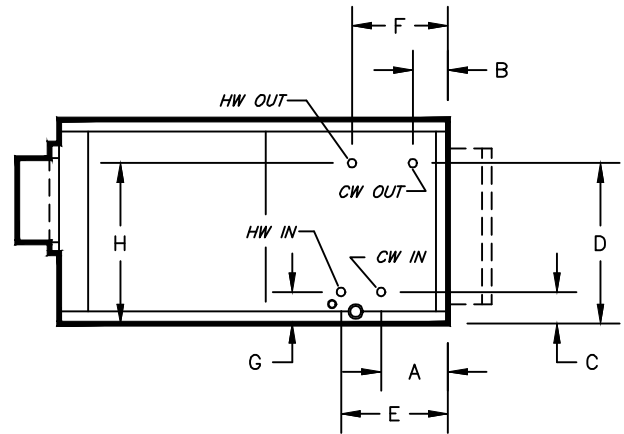
KBH, KBV - HORIZONTAL & VERTICAL BLOWER COIL

COIL CONNECTION LOCATION - 2 ROW WATER COIL IN RE-HEAT WITH 6 ROW WATER COIL IN COOLING

SUBMITTAL SHEET

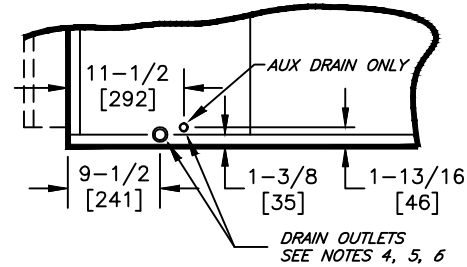


RIGHT HAND



LEFT HAND

STANDARD CIRCULATION					
SIZE	COIL CONNECTION	E	F	G	H
08	5/8 [16]	13-3/8 [340]	11-3/4 [298]	4-1/8 [105]	15-3/4 [401]
12					
16	7/8 [23]	13-1/2 [343]	11-5/8 [295]		15-7/8 [404]
20					
30	1-1/8 [29]			4-3/8 [112]	23-1/8 [588]
40	1-3/8 [35]				



TYPICAL DRAIN LOCATIONS

"LO GPM" CIRCULATION							
SIZE	COIL CONNECTION	E	F	G	H		
08	5/8 [16]	13-3/8 [340]	11-3/4 [298]	3-1/8 [86]	16-3/4 [426]		
12				4-1/8 [105]	15-3/4 [401]		
16						15-7/8 [404]	
20	7/8 [23]	13-1/2 [343]	11-5/8 [295]				
30							20-7/8 [531]
40	1-1/8 [29]				23-3/8 [594]		

"HIGH GPM" CIRCULATION					
SIZE	COIL CONNECTION	E	F	G	H
08	7/8 [23]	13-1/2 [343]	11-5/8 [295]	4-1/8 [105]	15-3/4 [401]
12					
16	1-1/8 [29]				15-7/8 [404]
20					
30	1-3/8 [35]			20-5/8 [524]	
40				23-1/8 [588]	

NOTES:

- ALL DIMENSIONS ARE INCHES [MM]
- ALL DIMENSIONS ARE $\pm 1/2"$ [13]
- METRIC VALUES ARE SOFT CONVERSION
- STANDARD GALVANIZED IAQ DRAIN PAN HAS 1-1/8" ODM COPPER CONNECTION ON ONE SIDE. STAINLESS STEEL IAQ DRAIN PAN HAS 1" GALVANIZED SCH. 40 THREADED STEEL CONNECTION ON ONE SIDE ONLY. OPTIONAL AUX CONNECTION IS 3/8" GALVANIZED SCH. 40 THREADED STEEL ON SAME SIDE AS COIL HAND.
- OPTIONAL FLAT GALVANIZED DRAIN PAN HAS 1-1/8" ODM COPPER CONNECTION. OPTIONAL AUX CONNECTION IS 5/8" ODM COPPER. STANDARD AND AUX CONNECTIONS ARE ON BOTH SIDES. CAP UNUSED CONNECTIONS.
- HEATING-ONLY UNITS MAY NOT INCLUDE A DRAIN PAN UNDER HEATING COIL. SEE ACTUAL ORDER DOCUMENTS.
- HORIZONTAL UNIT SHOWN. COIL CONNECTION LOCATIONS ARE TYPICAL FOR VERTICAL UNITS RELATIVE TO LOWER BOTTOM CORNER AT ENTERING AIR SIDE
- ALL CONNECTIONS ARE ODM COPPER SWEAT UNLESS OTHER NOTED
- FIELD PIPING SHOULD BE BASED ON JOB REQUIREMENTS, NOT UNIT CONNECTION SIZE

Revision Date: 12/14

Form: BCS11-WC44

Replaces: NEW