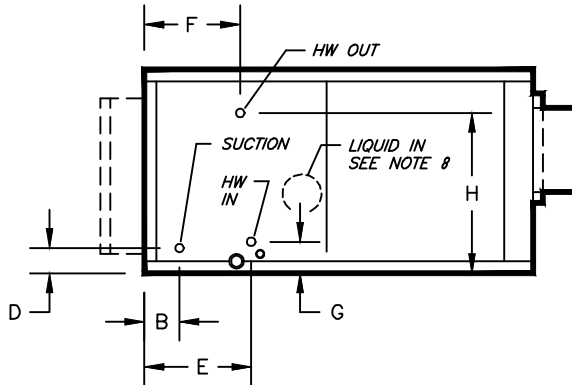


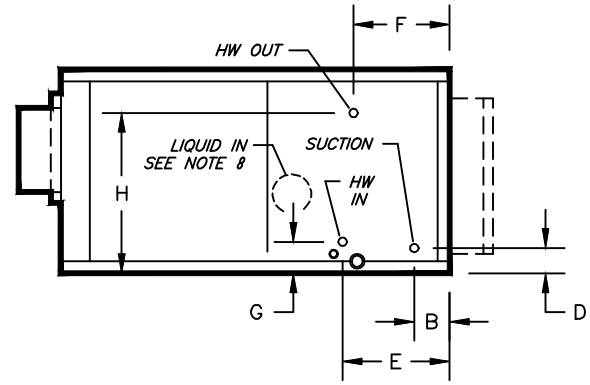
# KBH, KBV - HORIZONTAL & VERTICAL BLOWER COIL

COIL CONNECTION LOCATION - 2 ROW WATER COIL IN RE-HEAT WITH 3 ROW DX COIL IN COOLING

## SUBMITTAL SHEET

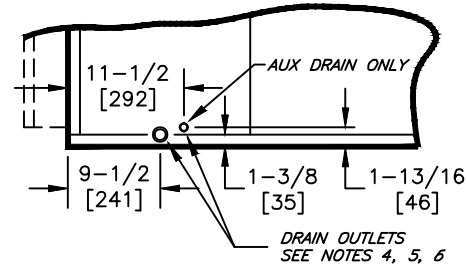


**RIGHT HAND**



**LEFT HAND**

STANDARD CIRCULATION					
SIZE	COIL CONNECTION	E	F	G	H
08	5/8 [16]	10-1/8 [258]	8-1/2 [216]	4-1/8 [105]	15-3/4 [401]
12					
16	7/8 [23]	10-1/4 [260]	8-3/8 [213]		15-7/8 [404]
20					
30	1-1/8 [29]			4-3/8 [112]	23-1/8 [588]
40	1-3/8 [35]				



**TYPICAL DRAIN LOCATIONS**

"LO GPM" CIRCULATION						
SIZE	COIL CONNECTION	E	F	G	H	
08	5/8 [16]	10 [254]	8-1/2 [216]	3-1/8 [79]	16-3/4 [426]	
12				4-1/8 [105]	15-3/4 [4014]	
16						
20	7/8 [23]	10-1/4 [260]	8-3/8 [213]			
30						20-7/8 [531]
40	1-1/8 [29]					

"HIGH GPM" CIRCULATION					
SIZE	COIL CONNECTION	E	F	G	H
08	7/8 [23]	10-1/4 [260]	8-3/8 [213]	4-1/8 [105]	15-3/4 [401]
12					
16	1-1/8 [29]				
20					
30	1-3/8 [35]			4-3/8 [112]	20-5/8 [524]
40					23-1/8 [588]

**NOTES:**

- ALL DIMENSIONS ARE INCHES [MM]
- ALL DIMENSIONS ARE  $\pm 1/2"$  [13]
- METRIC VALUES ARE SOFT CONVERSION
- STANDARD GALVANIZED IAQ DRAIN PAN HAS 1-1/8" ODM COPPER CONNECTION ON ONE SIDE. STAINLESS STEEL IAQ DRAIN PAN HAS 1" GALVANIZED SCH. 40 THREADED STEEL CONNECTION ON ONE SIDE ONLY. OPTIONAL AUX CONNECTION IS 3/8" GALVANIZED SCH. 40 THREADED STEEL ON SAME SIDE AS COIL HAND.
- OPTIONAL FLAT GALVANIZED DRAIN PAN HAS 1-1/8" ODM COPPER CONNECTION. OPTIONAL AUX CONNECTION IS 5/8" ODM COPPER. STANDARD AND AUX CONNECTIONS ARE ON BOTH SIDES. CAP UNUSED CONNECTIONS.
- HEATING-ONLY UNITS MAY NOT INCLUDE A DRAIN PAN UNDER HEATING COIL. SEE ACTUAL ORDER DOCUMENTS.
- HORIZONTAL UNIT SHOWN. COIL CONNECTION LOCATIONS ARE TYPICAL FOR VERTICAL UNITS RELATIVE TO LOWER BOTTOM CORNER AT ENTERING AIR SIDE
- CONNECTION AT REFRIGERANT DISTRIBUTOR IS INTERNAL TO ALLOW PROPER INSTALLATION OF EXPANSION VALVE
- ALL CONNECTIONS ARE ODM COPPER SWEAT UNLESS OTHER NOTED
- FIELD PIPING SHOULD BE BASED ON JOB REQUIREMENTS, NOT UNIT CONNECTION SIZE

Revision Date: 12/14

Form: BCS11-WC41

Replaces: NEW