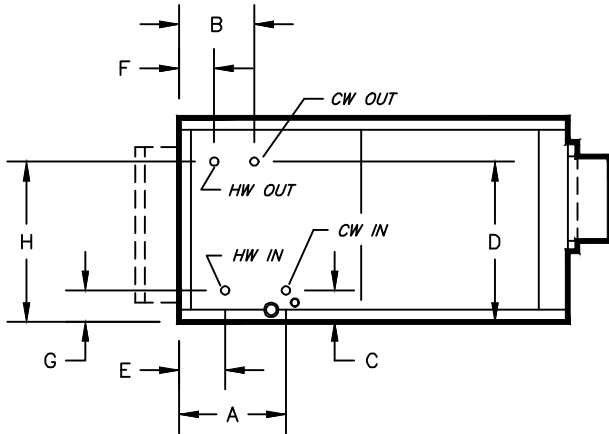
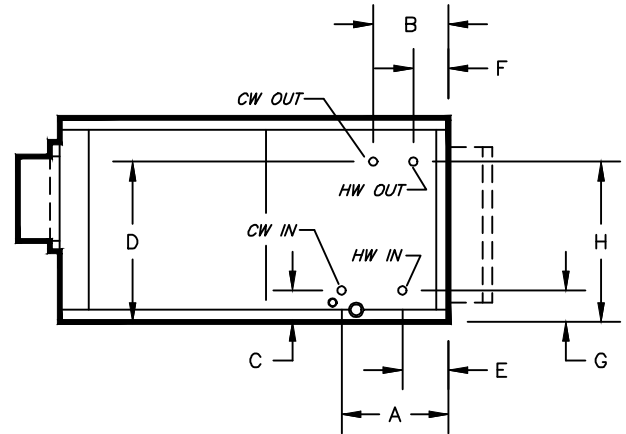


KBH, KBV - HORIZONTAL & VERTICAL BLOWER COIL
 COIL CONNECTION LOCATION - 2 ROW WATER COIL IN PRE-HEAT WITH WATER COIL IN COOLING

SUBMITTAL SHEET

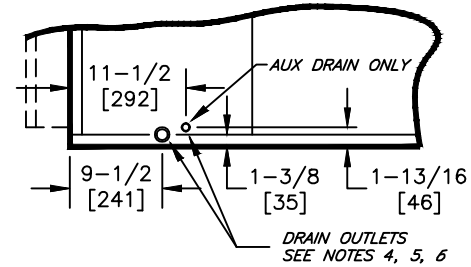


RIGHT HAND



LEFT HAND

STANDARD CIRCULATION					
SIZE	COIL CONNECTION	E	F	G	H
08	5/8	4-7/8	3-1/4	4-1/8	15-3/4
12	[16]	[124]	[83]		[401]
16	7/8	5	3-1/8	4-1/8	15-7/8
20	[23]				[404]
30	1-1/8				[531]
40	1-3/8	[127]	[79]	4-3/8	23-1/8
	[35]			[112]	[588]



TYPICAL DRAIN LOCATIONS

"LO GPM" CIRCULATION					
SIZE	COIL CONNECTION	E	F	G	H
08	5/8	4-1/8	4-1/8	3-1/8	16-3/4
12		[105]	[105]	[79]	[426]
16	7/8	5	3-1/8	4-1/8	15-3/4
20					[4014]
30					[404]
40	1-1/8	[127]	[79]	[105]	20-7/8
	[29]				[531]
	[23]				[594]

"HIGH GPM" CIRCULATION					
SIZE	COIL CONNECTION	E	F	G	H
08	7/8	5	3-1/8	4-1/8	15-3/4
12	[23]				[401]
16	1-1/8	5	3-1/8	4-1/8	15-7/8
20					[29]
30	1-3/8	[127]	[79]	4-3/8	20-5/8
40					[35]
					23-1/8
					[588]

NOTES:

- ALL DIMENSIONS ARE INCHES [MM]
- ALL DIMENSIONS ARE ±1/2" [13]
- METRIC VALUES ARE SOFT CONVERSION
- STANDARD GALVANIZED IAQ DRAIN PAN HAS 1-1/8" ODM COPPER CONNECTION ON ONE SIDE. STAINLESS STEEL IAQ DRAIN PAN HAS 1" GALVANIZED SCH. 40 THREADED STEEL CONNECTION ON ONE SIDE ONLY. OPTIONAL AUX CONNECTION IS 3/8" GALVANIZED SCH. 40 THREADED STEEL ON SAME SIDE AS COIL HAND.
- OPTIONAL FLAT GALVANIZED DRAIN PAN HAS 1-1/8" ODM COPPER CONNECTION. OPTIONAL AUX CONNECTION IS 5/8" ODM COPPER. STANDARD AND AUX CONNECTIONS ARE ON BOTH SIDES. CAP UNUSED CONNECTIONS.
- HEATING-ONLY UNITS MAY NOT INCLUDE A DRAIN PAN UNDER HEATING COIL. SEE ACTUAL ORDER DOCUMENTS.
- HORIZONTAL UNIT SHOWN. COIL CONNECTION LOCATIONS ARE TYPICAL FOR VERTICAL UNITS RELATIVE TO LOWER BOTTOM CORNER AT ENTERING AIR SIDE
- ALL CONNECTIONS ARE ODM COPPER SWEAT UNLESS OTHER NOTED
- FIELD PIPING SHOULD BE BASED ON JOB REQUIREMENTS, NOT UNIT CONNECTION SIZE

Revision Date: 12/14	Form: BCS11-WC31	Replaces: NEW
----------------------	------------------	---------------