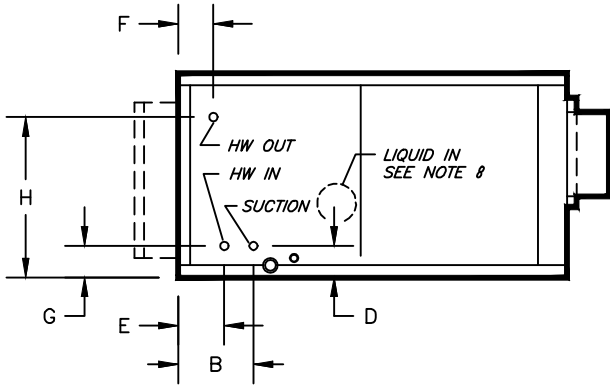
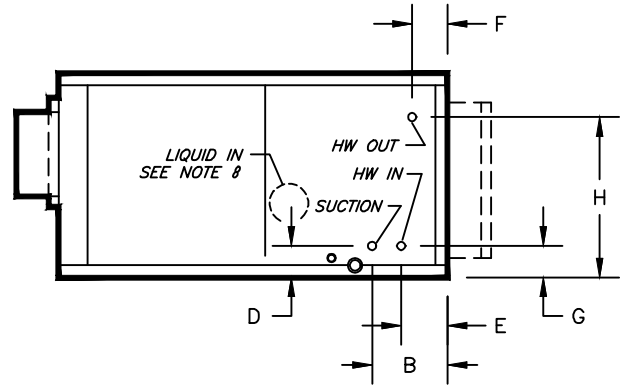


**KBH, KBV - HORIZONTAL & VERTICAL BLOWER COIL**  
 COIL CONNECTION LOCATION - 1 ROW WATER COIL IN PRE-HEAT WITH DX COIL IN COOLING

**SUBMITTAL SHEET**

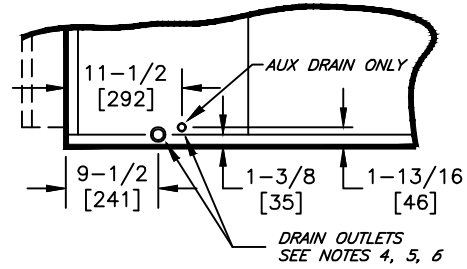


**RIGHT HAND**



**LEFT HAND**

| STANDARD CIRCULATION |                 |                |               |                 |                 |
|----------------------|-----------------|----------------|---------------|-----------------|-----------------|
| SIZE                 | COIL CONNECTION | E              | F             | G               | H               |
| 08                   | 5/8<br>[16]     | 4-1/2<br>[115] | 2-3/4<br>[70] | 4-1/8<br>[105]  | 15-3/4<br>[401] |
| 12                   |                 |                |               |                 | 15-7/8<br>[404] |
| 16                   |                 |                |               |                 | 20-7/8<br>[531] |
| 20                   | 7/8<br>[23]     | 4-5/8<br>[117] | 2-3/8<br>[60] | 23-3/8<br>[594] | 23-3/8<br>[594] |
| 30                   | 1-1/8<br>[29]   |                |               |                 | 1-1/8<br>[29]   |



**TYPICAL DRAIN LOCATIONS**

| "LO GPM" CIRCULATION |                 |                |               |                |                 |
|----------------------|-----------------|----------------|---------------|----------------|-----------------|
| SIZE                 | COIL CONNECTION | E              | F             | G              | H               |
| 08                   | 5/8<br>[16]     | 4-1/4<br>[108] | 2-3/4<br>[70] | 3-3/8<br>[86]  | 17-1/8<br>[435] |
| 12                   |                 |                |               |                | 17-1/8<br>[435] |
| 16                   |                 |                |               |                | 20-7/8<br>[531] |
| 20                   | 7/8<br>[23]     | 4-1/2<br>[115] | 2-5/8<br>[67] | 4-1/8<br>[105] | 20-7/8<br>[531] |
| 30                   | 1-1/8<br>[29]   |                |               |                | 23-3/8<br>[594] |

| "HIGH GPM" CIRCULATION |                 |                |               |                 |                 |
|------------------------|-----------------|----------------|---------------|-----------------|-----------------|
| SIZE                   | COIL CONNECTION | E              | F             | G               | H               |
| 08                     | 7/8<br>[23]     | 4-1/2<br>[115] | 2-5/8<br>[67] | 4-1/8<br>[105]  | 15-3/4<br>[401] |
| 12                     |                 |                |               |                 | 15-3/4<br>[401] |
| 16                     |                 |                |               |                 | 15-7/8<br>[404] |
| 20                     | 1-1/8<br>[29]   | 2-1/2<br>[64]  | 2-1/2<br>[64] | 23-3/8<br>[594] | 20-7/8<br>[531] |
| 30                     | 1-1/8<br>[29]   |                |               |                 | 23-3/8<br>[594] |

**NOTES:**

- ALL DIMENSIONS ARE INCHES [MM]
- ALL DIMENSIONS ARE ±1/2" [13]
- METRIC VALUES ARE SOFT CONVERSION
- STANDARD GALVANIZED IAQ DRAIN PAN HAS 1-1/8" ODM COPPER CONNECTION ON ONE SIDE. STAINLESS STEEL IAQ DRAIN PAN HAS 1" GALVANIZED SCH. 40 THREADED STEEL CONNECTION ON ONE SIDE ONLY. OPTIONAL AUX CONNECTION IS 3/8" GALVANIZED SCH. 40 THREADED STEEL ON SAME SIDE AS COIL HAND.
- OPTIONAL FLAT GALVANIZED DRAIN PAN HAS 1-1/8" ODM COPPER CONNECTION. OPTIONAL AUX CONNECTION IS 5/8" ODM COPPER. STANDARD AND AUX CONNECTIONS ARE ON BOTH SIDES. CAP UNUSED CONNECTIONS.
- HEATING-ONLY UNITS MAY NOT INCLUDE A DRAIN PAN UNDER HEATING COIL. SEE ACTUAL ORDER DOCUMENTS.
- HORIZONTAL UNIT SHOWN. COIL CONNECTION LOCATIONS ARE TYPICAL FOR VERTICAL UNITS RELATIVE TO LOWER BOTTOM CORNER AT ENTERING AIR SIDE
- CONNECTION AT REFRIGERANT DISTRIBUTOR IS INTERNAL TO ALLOW PROPER INSTALLATION OF EXPANSION VALVE
- ALL CONNECTIONS ARE ODM COPPER SWEAT UNLESS OTHER NOTED
- FIELD PIPING SHOULD BE BASED ON JOB REQUIREMENTS, NOT UNIT CONNECTION SIZE

|                      |                  |               |
|----------------------|------------------|---------------|
| Revision Date: 12/14 | Form: BCS11-WC30 | Replaces: NEW |
|----------------------|------------------|---------------|