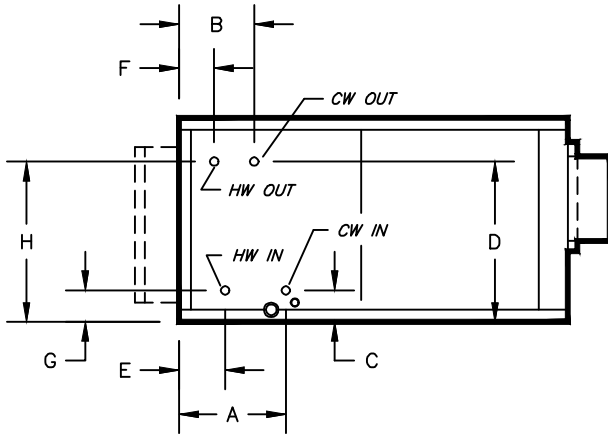
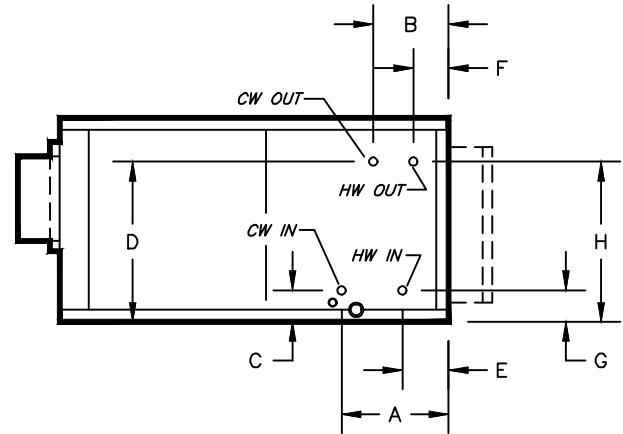


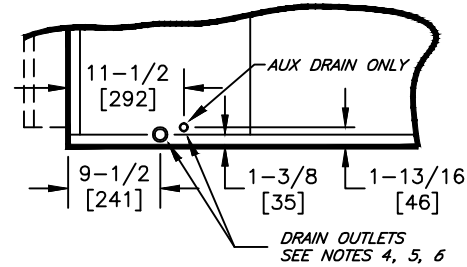
# KBH, KBV - HORIZONTAL & VERTICAL BLOWER COIL

COIL CONNECTION LOCATION - 1 ROW WATER COIL IN PRE-HEAT WITH WATER COIL IN COOLING

## SUBMITTAL SHEET


**RIGHT HAND**

**LEFT HAND**

STANDARD CIRCULATION					
SIZE	COIL CONNECTION	E	F	G	H
08	5/8 [16]	4-1/2 [115]	2-3/4 [70]	4-1/8 [105]	15-3/4 [401]
12					
16					
20					15-7/8 [404]
30	7/8 [23]	4-5/8 [117]	2-3/8 [60]		20-7/8 [531]
40	1-1/8 [29]				23-3/8 [594]


**TYPICAL DRAIN LOCATIONS**

"LO GPM" CIRCULATION					
SIZE	COIL CONNECTION	E	F	G	H
08	5/8 [16]	4-1/4 [108]	2-3/4 [70]	3-3/8 [86]	17-1/8 [435]
12					
16					
20					20-7/8 [531]
30	7/8 [23]	4-1/2 [115]	2-5/8 [67]	4-1/8 [105]	23-3/8 [594]
40					

"HIGH GPM" CIRCULATION					
SIZE	COIL CONNECTION	E	F	G	H
08	7/8 [23]	4-1/2 [115]	2-5/8 [67]	4-1/8 [105]	15-3/4 [401]
12					
16					
20					15-7/8 [404]
30	1-1/8 [29]		2-1/2 [64]		20-7/8 [531]
40					23-3/8 [594]

**NOTES:**

- ALL DIMENSIONS ARE INCHES [MM]
- ALL DIMENSIONS ARE  $\pm 1/2"$  [13]
- METRIC VALUES ARE SOFT CONVERSION
- STANDARD GALVANIZED IAQ DRAIN PAN HAS 1-1/8" ODM COPPER CONNECTION ON ONE SIDE. STAINLESS STEEL IAQ DRAIN PAN HAS 1" GALVANIZED SCH. 40 THREADED STEEL CONNECTION ON ONE SIDE ONLY. OPTIONAL AUX CONNECTION IS 3/8" GALVANIZED SCH. 40 THREADED STEEL ON SAME SIDE AS COIL HAND.
- OPTIONAL FLAT GALVANIZED DRAIN PAN HAS 1-1/8" ODM COPPER CONNECTION. OPTIONAL AUX CONNECTION IS 5/8" ODM COPPER. STANDARD AND AUX CONNECTIONS ARE ON BOTH SIDES. CAP UNUSED CONNECTIONS.
- HEATING-ONLY UNITS MAY NOT INCLUDE A DRAIN PAN UNDER HEATING COIL. SEE ACTUAL ORDER DOCUMENTS.
- HORIZONTAL UNIT SHOWN. COIL CONNECTION LOCATIONS ARE TYPICAL FOR VERTICAL UNITS RELATIVE TO LOWER BOTTOM CORNER AT ENTERING AIR SIDE
- ALL CONNECTIONS ARE ODM COPPER SWEAT UNLESS OTHER NOTED
- FIELD PIPING SHOULD BE BASED ON JOB REQUIREMENTS, NOT UNIT CONNECTION SIZE

Revision Date: 12/14

Form: BCS11-WC29

Replaces: NEW