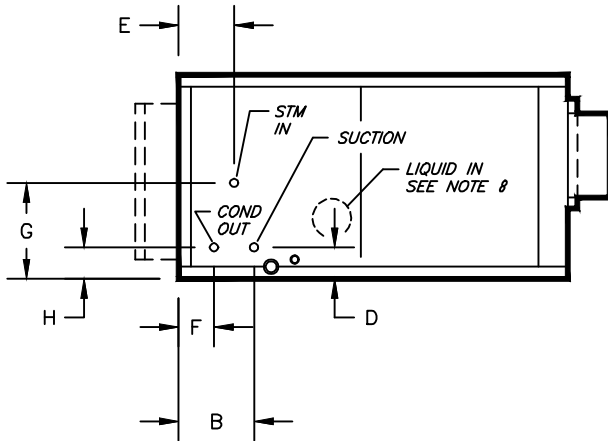


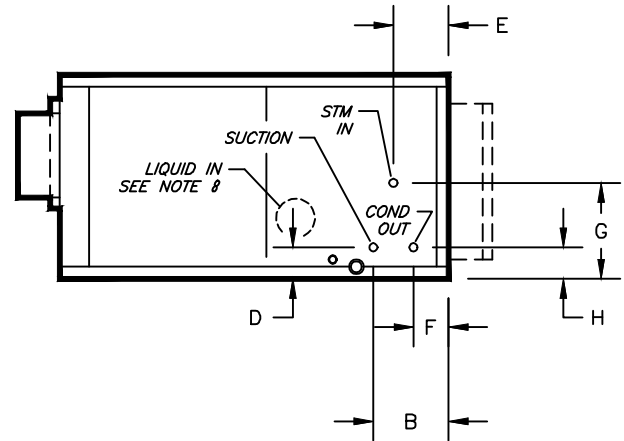
KBH, KBV - HORIZONTAL & VERTICAL BLOWER COIL

COIL CONNECTION LOCATION - 3, 4, 6 ROW DX COOLING COIL WITH STEAM, PRE-HEAT

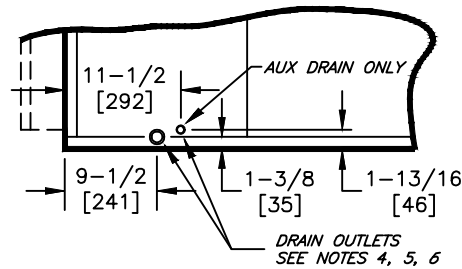
SUBMITTAL SHEET



RIGHT HAND



LEFT HAND



TYPICAL DRAIN LOCATIONS

LIQUID AND SUCTION CONNECTION SIZE RANGES		
DISTRIBUTOR CONNECTION	CONNECTION SIZE	D
SEE NOTES	5/8 [16]	2-1/8 [54]
	7/8 [23]	2-1/2 [64]
	1-1/8 [29]	2-5/8 [67]
	1-3/8 [36]	3 [76]

WITH STEAM PRE-HEAT	
SIZE	B
08	9-7/8 [251]
12	
16	
20	
30	
40	

NOTES:

- ALL DIMENSIONS ARE INCHES [MM]
- ALL DIMENSIONS ARE $\pm 1/2"$ [13]
- METRIC VALUES ARE SOFT CONVERSION
- STANDARD GALVANIZED IAQ DRAIN PAN HAS 1-1/8" ODM COPPER CONNECTION ON ONE SIDE. STAINLESS STEEL IAQ DRAIN PAN HAS 1" GALVANIZED SCH. 40 THREADED STEEL CONNECTION ON ONE SIDE ONLY. OPTIONAL AUX CONNECTION IS 3/8" GALVANIZED SCH. 40 THREADED STEEL ON SAME SIDE AS COIL HAND.
- OPTIONAL FLAT GALVANIZED DRAIN PAN HAS 1-1/8" ODM COPPER CONNECTION. OPTIONAL AUX CONNECTION IS 5/8" ODM COPPER. STANDARD AND AUX CONNECTIONS ARE ON BOTH SIDES. CAP UNUSED CONNECTIONS.
- HEATING-ONLY UNITS MAY NOT INCLUDE A DRAIN PAN UNDER HEATING COIL. SEE ACTUAL ORDER DOCUMENTS.
- HORIZONTAL UNIT SHOWN. COIL CONNECTION LOCATIONS ARE TYPICAL FOR VERTICAL UNITS RELATIVE TO LOWER BOTTOM CORNER AT ENTERING AIR SIDE
- CONNECTION AT REFRIGERANT DISTRIBUTOR IS INTERNAL TO ALLOW PROPER INSTALLATION OF EXPANSION VALVE
- ALL CONNECTIONS ARE ODM COPPER SWEAT UNLESS OTHER NOTED
- FIELD PIPING SHOULD BE BASED ON JOB REQUIREMENTS, NOT UNIT CONNECTION SIZE
- DISTRIBUTOR CONNECTION SIZE VARIES WITH ACTUAL OPERATING CONDITIONS; CONSULT THE FACTORY FOR DETAILS

Revision Date: 12/14

Form: BCS11-WC28

Replaces: NEW